

4450 Flattop Garage Brick Removal Report

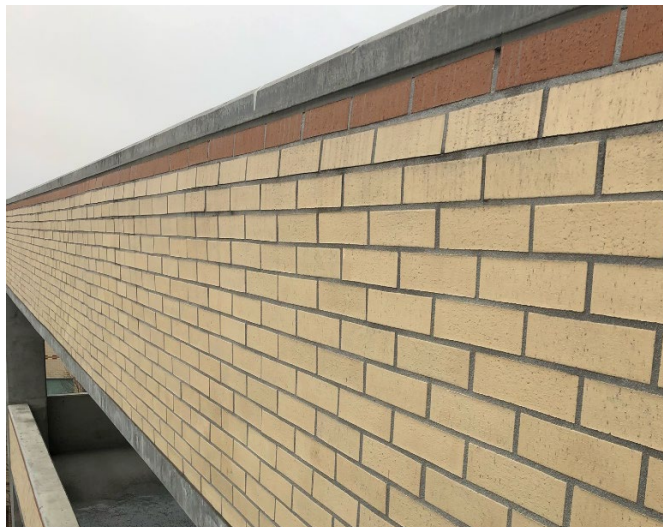
10/29/2020 - We finished removing most of the loose thin brick from the North and South shear walls on the Flattop Garage.

South Side

The South side of the garage had sporadic delamination of the brick comprising of about 60% - 70% of the total surface area. To safely remove the brick the Southcentral Foundation Sign had to be removed from the garage. We removed roughly 99% of the loose brick, a few loose bricks were left in the middle of solid fields of brick.



The area of brick on the top left of the South side was in such poor condition creating a safety hazard, we removed it immediately upon discovery.



North Side

The North Side of the garage had much larger sheets that had failed and were ready to come down with the slightest manipulation. The total amount of failed brick on the shear wall was in the 20-30% range. We removed approximately 99% of the loose bricks, leaving only a 1-2 bricks in the middle of solid fields in a couple of places.



Below are detailed photos of the damaged sheets on the North side.



Caulking holding the
brick in place.



Grout lines cracking and
brick sheets peeling
away from wall.



Failed Sheet.



Cracking sheet.