

**BASEMENT FLOOR PLAN**  
 13,757 SF GROSS AREA THIS FLOOR

SCALE: 1/16" = 1'-0"

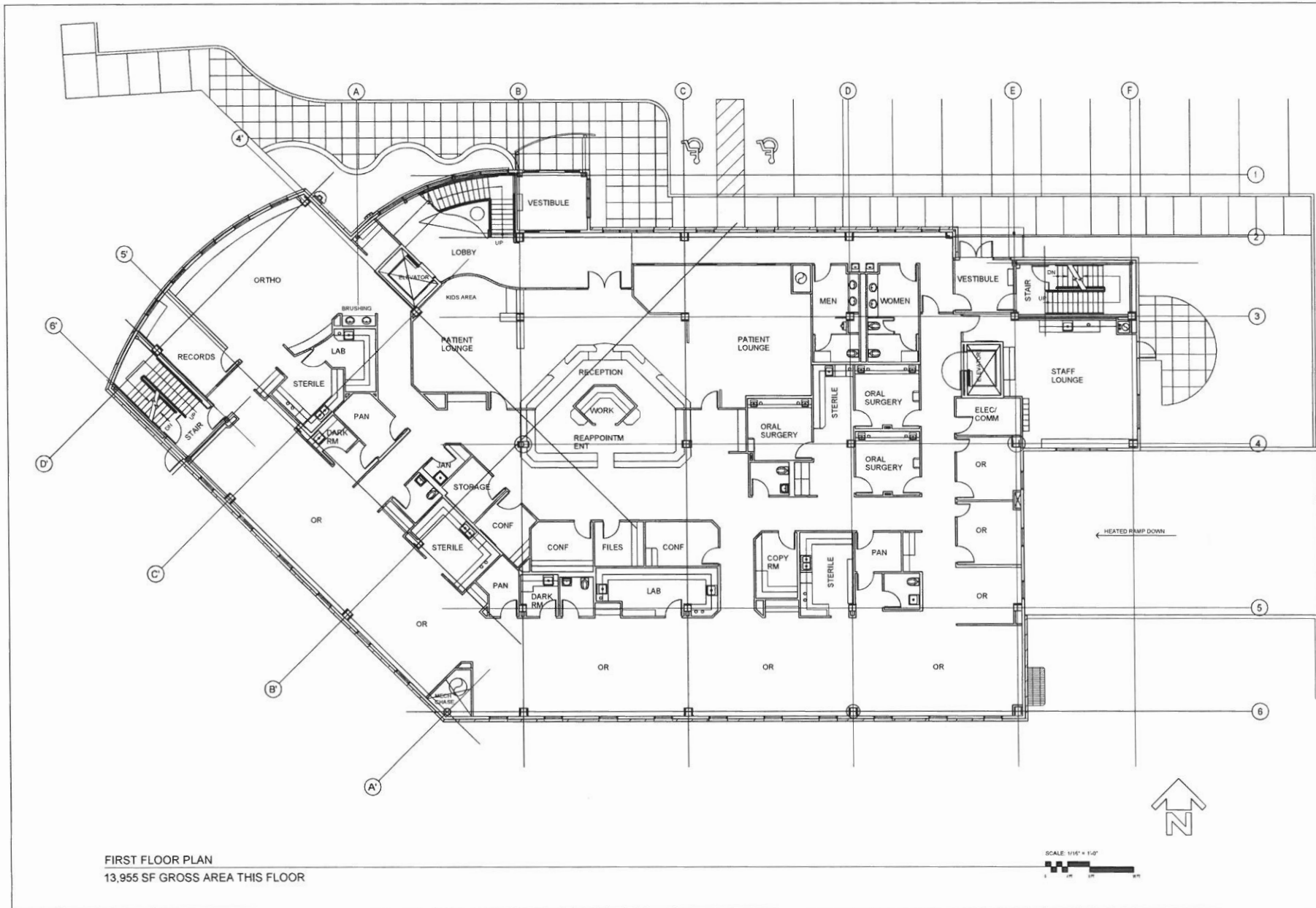
SOUTHCENTRAL FOUNDATION  
 Facilities Department  
 4175 Tudor Centre Drive  
 Anchorage, Alaska 99508

DATE: 10/2008  
 JOB NUMBER: 2008-7  
 SCALE: AS SHOWN  
 DRAWN BY: RHM

as-built dwgs of OFFICE BUILDING AT  
**4341 TUDOR CENTRE DR**  
 anchorage, alaska

REVISIONS

SHEET  
**AB-1**  
 OF 4



FIRST FLOOR PLAN  
 13,955 SF GROSS AREA THIS FLOOR

SOUTHCENTRAL FOUNDATION  
 Facilities Department  
 4175 Tudor Centre Drive  
 Anchorage, Alaska 99508

DATE 10/20/08  
 JOB NUMBER 2008-7  
 SCALE AS SHOWN  
 DRAWN BY RHM

as-built dwgs of OFFICE BUILDING AT  
**4341 TUDOR CENTRE DR**  
 anchorage, alaska

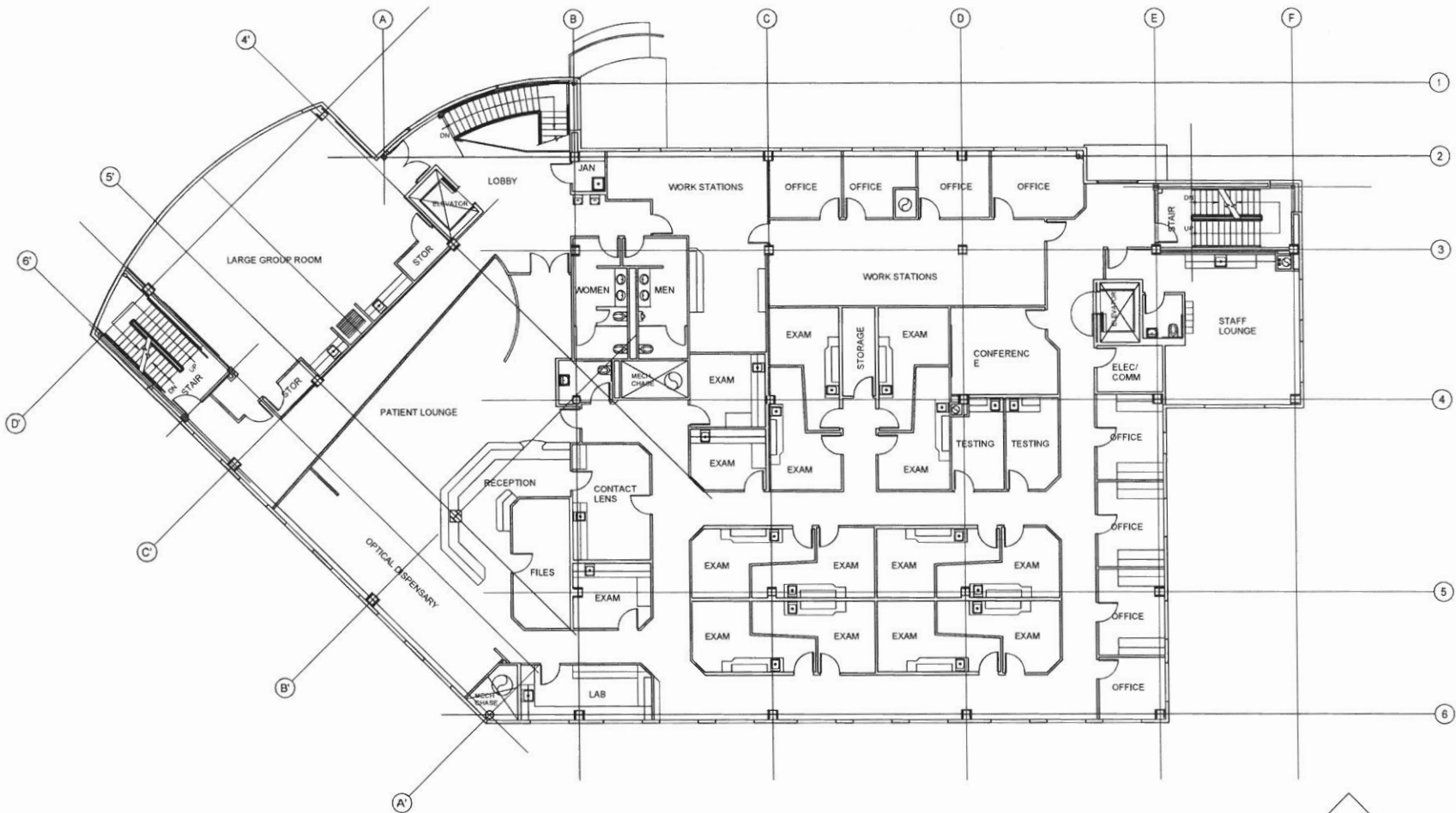
REVISIONS



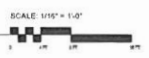
SHEET

**AB-2**

OF 4



SECOND FLOOR PLAN  
13,826 SF GROSS AREA THIS FLOOR



SOUTHCENTRAL FOUNDATION  
Facilities Department  
4175 Tudor Centre Drive  
Anchorage, Alaska 99508

DATE 10/26/08  
JOB NUMBER 2006-7  
SCALE AS SHOWN  
DRAWN BY RHM

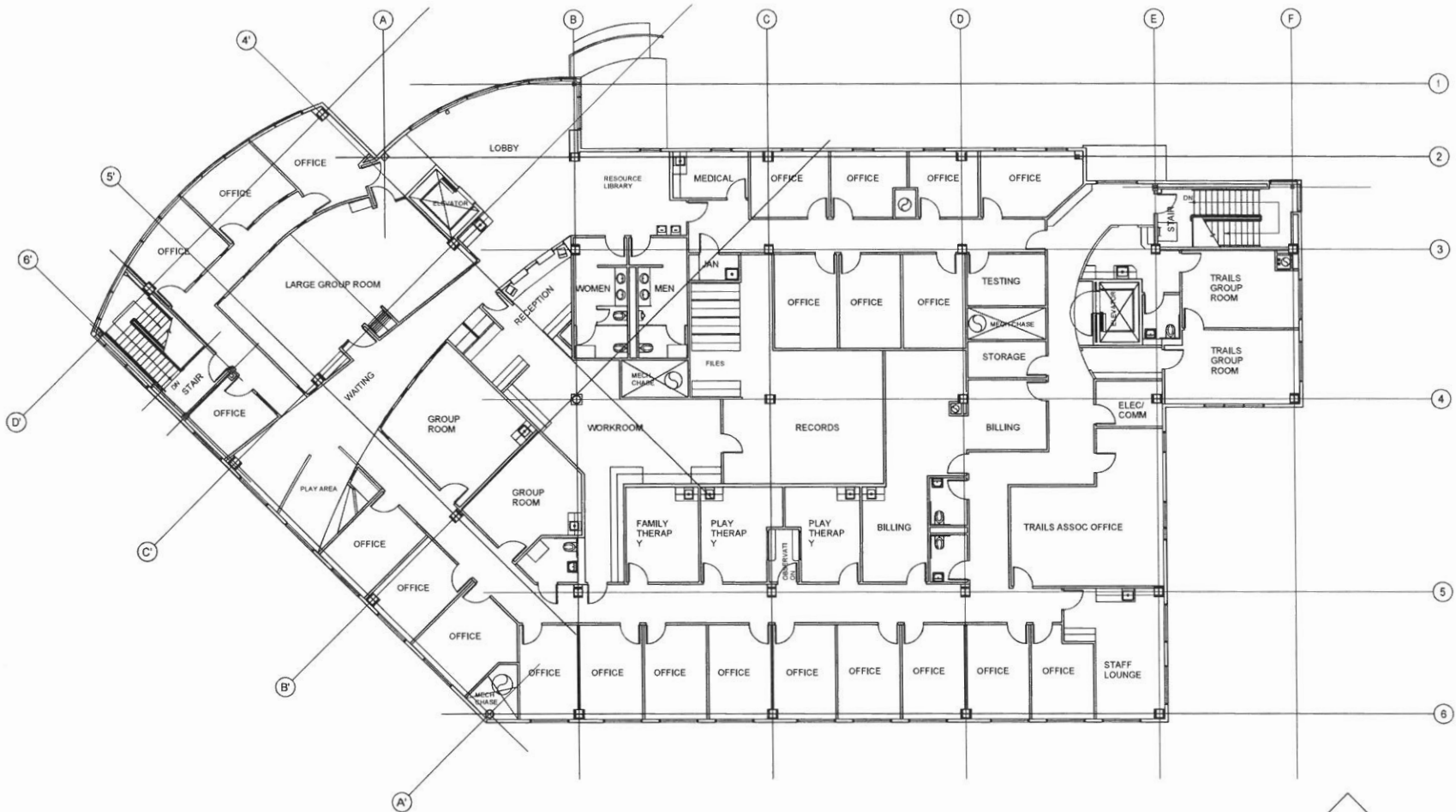
as-built dwgs of OFFICE BUILDING AT  
**4341 TUDOR CENTRE DR**  
anchorage, alaska

REVISIONS

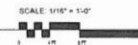
SHEET

**AB-3**

OF 4



THIRD FLOOR PLAN  
13,826 SF GROSS AREA THIS FLOOR



SOUTHCENTRAL FOUNDATION  
Facilities Department  
4175 Tudor Centre Drive  
Anchorage, Alaska 99508

DATE: 10/26/08  
JOB NUMBER: 2006-7  
SCALE: AS SHOWN  
DRAWN BY: RHM

as-built drawings of OFFICE BUILDING AT  
**4341 TUDOR CENTRE DR**  
anchorage, alaska

REVISIONS:



SHEET

**AB-4**

OF 4