



## EXHIBIT D

### SCF Fireweed Building Project

#### Scope of Work (from solicited ITB)

**Note:** The below information is from the original Invitation to Bid, published by SCF in August of 2023. SCF has signed a contract with Cornerstone General Contractors for this work. **See attached, current project schedule.**

#### Contract Period

Construction funding dictates that this project must start in the fall of 2023 (anticipated NTP in September of 2023). Substantial Completion is anticipated in early Summer of 2024. Bidder shall identify any long lead materials/items in their bid that could impact this anticipated completion date.

#### Project General Description

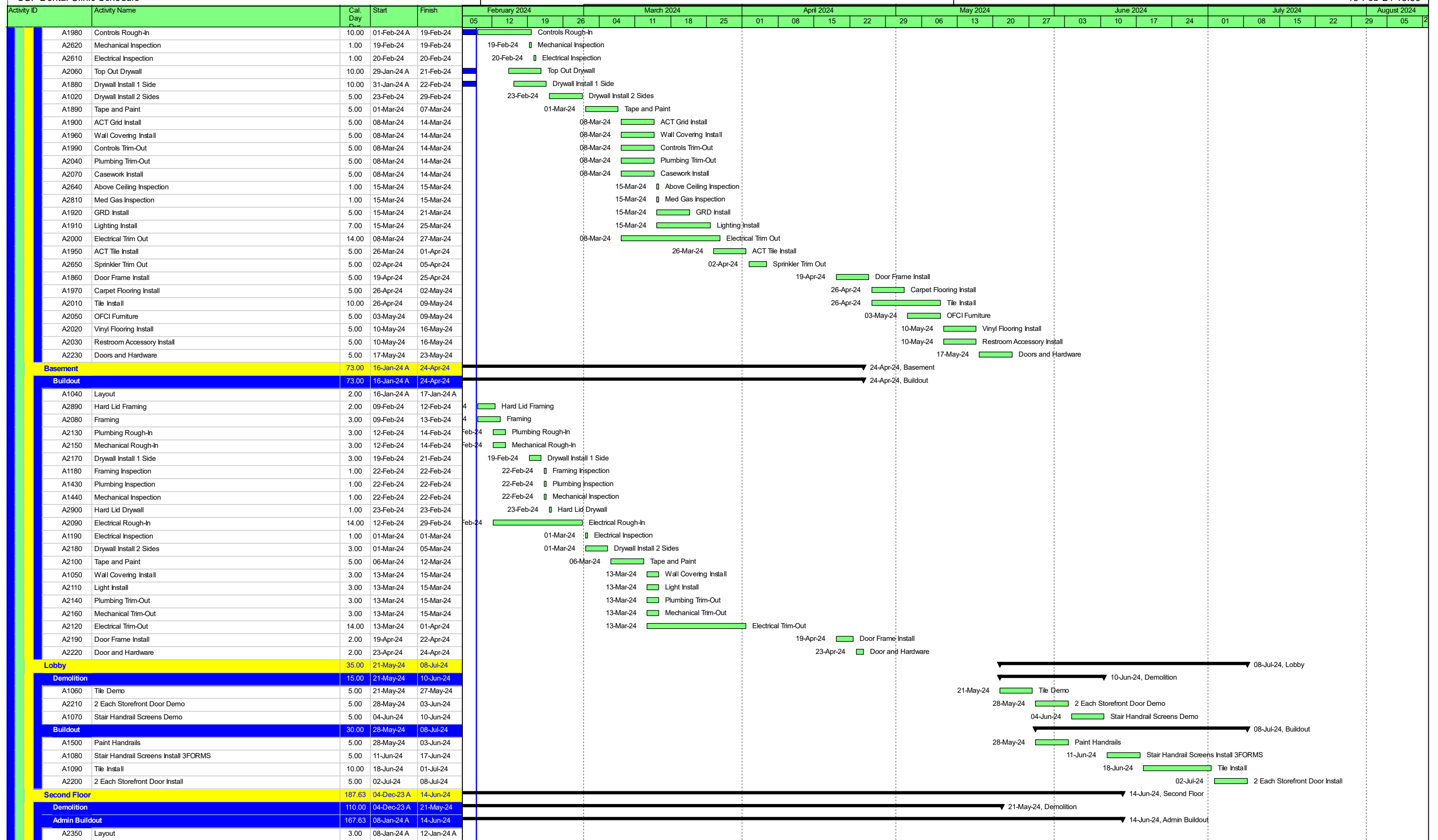
Southcentral Foundation needs to renovate existing dental space on the first floor and existing dental and optometry space on the second floor of the Fireweed Building located at 4341 Tudor Centre Drive, Anchorage, AK 99508. The new space on the first floor will consist of dental treatment rooms with associated support spaces including lab, supply rooms, pan, offices. The first-floor renovation work is approximately 10,600 SQ.FT. The new space on the second floor shall consist of dental administration and the addition of optometry exams, conferencing, and storage. The second-floor renovation work is approximately 6,500 SQ.FT. Additional renovation of the basement is also included to accommodate increased Medical Gas capacity and associated mechanical and electrical upgrades. Contractors will review existing conditions and prepare a bid based on the information contained in the Construction Documents, Equipment Cut Sheets, and Specifications (all dated July 10, 2023), and calculations and submittal information included in these Bid Documents (Supplementary PDF's).

#### Scope of Services

SCF has solicited fixed price proposals from qualified contractors to complete the Fireweed Dental Renovation work located at 4341 Tudor Centre Drive, in Anchorage, AK. **See the Fireweed Dental Remodel Construction Documents and Specifications, in EXHIBITS G and H, for additional scope information.**

Activity ID	Activity Name	Cal. Day	Start	Finish	February 2024				March 2024				April 2024				May 2024				June 2024				July 2024				August 2024			
					05	12	19	26	04	11	18	25	01	08	15	22	29	06	13	20	27	03	10	17	24	01	08	15	22	29	05	
<b>SCF Dental Clinic Schedule</b>					05-Aug-24																											
<b>Contract with Owner</b>																																
<b>Administrative</b>																																
<b>Subcontracts Issued</b>																																
<b>Material Subcontracts</b>																																
<b>Subcontracts</b>																																
<b>Submittals</b>																																
<b>Submittals to GC</b>					13-Feb-24, Submittals to GC																											
A1510	Mechanical	5.00	10-Nov-23 A	01-Dec-23 /																												
A1520	Electrical	5.00	17-Nov-23 A	07-Dec-23 /																												
A1550	Tape and Paint	5.00	11-Dec-23 A	14-Dec-23 /																												
A1530	Flooring	5.00	14-Dec-23 A	15-Dec-23 /																												
A1560	Fire Suppression	5.00	08-Jan-24 A	12-Jan-24 A																												
A1570	Ceilings	5.00	01-Dec-23 A	20-Jan-24 A																												
A2550	AHU	21.00	28-Nov-23 A	09-Feb-24	AHU																											
A1540	Glazing	5.00	19-Jan-24 A	13-Feb-24	Glazing																											
<b>Submittals Reviewed by A/E</b>					18-Feb-24, Submittals Reviewed by A/E																											
A3020	Framing/GWB	5.00	23-Nov-23 A	01-Dec-23 /																												
A1600	Flooring	5.00	15-Dec-23 A	22-Dec-23 /																												
A1620	Tape and Paint	5.00	20-Dec-23 A	10-Jan-24 A																												
A3000	Doors and Hardware	5.00	14-Dec-23 A	12-Jan-24 A																												
A1580	Mechanical	5.00	13-Nov-23 A	16-Jan-24 A																												
A2980	Restroom Accessories/Hardware	5.00	18-Dec-23 A	19-Jan-24 A																												
A3040	Wall Covering	5.00	15-Jan-24 A	19-Jan-24 A																												
A1640	Ceilings	5.00	04-Dec-23 A	22-Jan-24 A																												
A2560	AHU	12.00	11-Dec-23 A	24-Jan-24 A																												
A1630	Fire Suppression	5.00	15-Jan-24 A	01-Feb-24 A	ppression																											
A2910	3Forms Handrail Screens	5.00	29-Jan-24 A	02-Feb-24 A	ms Handrail Screens																											
A1590	Electrical	5.00	22-Nov-23 A	09-Feb-24	Electrical																											
A1610	Glazing	5.00	27-Jan-24 A	18-Feb-24	Glazing																											
<b>Procurement</b>					24-Jun-24, Procurement																											
A3030	Framing/GWB	15.00	27-Nov-23 A	10-Jan-24 A																												
A1690	Tape and Paint	5.00	19-Jan-24 A	23-Jan-24 A																												
A1700	Fire Suppression	20.00	27-Jan-24 A	01-Feb-24 A	ppression																											
A1650	Mechanical	5.00	06-Dec-23 A	09-Feb-24	Mechanical																											
A1660	Electrical	5.00	01-Dec-23 A	10-Feb-24	Electrical																											
A1710	Ceilings	5.00	29-Jan-24 A	13-Feb-24	Ceilings																											
A3050	Wall Covering	28.00	19-Jan-24 A	23-Feb-24	Wall Covering																											
A2990	Restroom Accessories/Hardware	28.00	09-Feb-24	07-Mar-24	Restroom Accessories/Hardware																											
A1670	Flooring	30.00	19-Jan-24 A	19-Mar-24	Flooring																											
A1680	Glazing	60.00	19-Feb-24	18-Apr-24	19-Feb-24 Glazing																											
A3010	Doors and Hardware	77.00	22-Jan-24 A	18-Apr-24	Doors and Hardware																											
A2920	3Forms Handrail Screens	112.00	09-Feb-24	30-May-24	3Forms Handrail Screens																											
A2570	AHU	160.00	26-Jan-24 A	24-Jun-24	AHU																											
<b>Construction</b>					15-Jul-24, Construction																											
<b>Mobilization</b>																																
<b>First Floor</b>																																
<b>Demolition</b>					23-May-24, First Floor																											
<b>Buildout</b>					23-May-24, Buildout																											
A1800	Layout	5.00	11-Dec-23 A	15-Dec-23 /																												
A1810	Plumbing/Mechanical Layout for Core Drilling	3.00	10-Jan-24 A	12-Jan-24 A	rilling																											
A2580	Framing Inspection	1.00	26-Jan-24 A	26-Jan-24 A	on																											
A1820	Core Drilling	8.00	11-Jan-24 A	29-Jan-24 A	g																											
A1840	Fireproofing of Slab Penetrations	7.00	18-Dec-23 A	01-Feb-24 A	p of Slab Penetrations																											
A2960	Sprinkler Rough-In	5.00	16-Jan-24 A	01-Feb-24 A	er Rough-In																											
A1850	Wall Framing	15.00	12-Dec-23 A	09-Feb-24	Wall Framing																											
A1830	Mechanical/Plumbing rough-In through Slab	10.00	17-Jan-24 A	13-Feb-24	Mechanical/Plumbing rough-In through Slab																											
A1870	Backing Install	3.00	09-Feb-24 A	13-Feb-24	Backing Install																											
A1030	Plumbing Rough-In	15.00	11-Jan-24 A	15-Feb-24	Plumbing Rough-In																											
A1930	Electrical Rough-In	15.00	15-Dec-23 A	15-Feb-24	Electrical Rough-In																											
A1940	Mechanical Rough-In Above Ceiling	10.00	15-Dec-23 A	16-Feb-24	Mechanical Rough-In Above Ceiling																											
A2630	Plumbing Inspection	1.00	16-Feb-24	16-Feb-24	16-Feb-24 Plumbing Inspection																											

█ Actual Work   
 █ Critical Remaining Work   
 ▶ Summary  
█ Remaining Work   
 ◆ Milestone



█ Actual Work   
 █ Critical Remaining Work   
 ▶ Summary  
█ Remaining Work   
 ◆ Milestone



