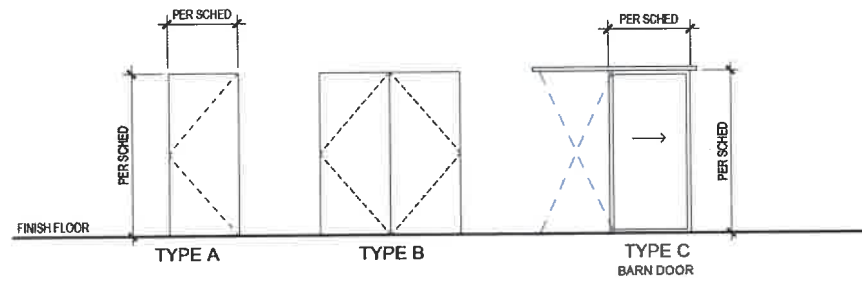


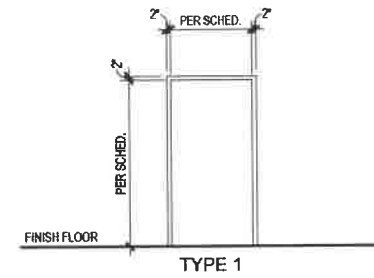


DOOR AND FRAME SCHEDULE															
NUMBER	DOORS				FRAMES							FIRE RATING	HARDWARE GROUP	REMARKS	REVISIONS
	TYPE	MATL	FINISH	GLASS TYPE	SIZE		TYPE	MATL	FINISH	HEAD	JAMB				
					WIDTH	HEIGHT									
LEVEL 1															
105	A	WOOD	MATCH EXISTING		36"	84"	MATCH EXISTING	MATCH EXISTING	MATCH EXISTING						
106	C	PROVIDED BY VENDOR	PROVIDED BY VENDOR	TEMPERED	36"	86"	PROVIDED BY VENDOR	PROVIDED BY VENDOR	PROVIDED BY VENDOR				20 MIN	MATCH EXISTING	PROVIDE SMOKE GASKET AND CLOSER
107	A	WOOD	MATCH EXISTING		36"	84"	MATCH EXISTING	MATCH EXISTING	MATCH EXISTING						
107A	B	WOOD	MATCH EXISTING		42"	84"	MATCH EXISTING	MATCH EXISTING	MATCH EXISTING						
108					36"	84"									
109					36"	84"									

DOOR TYPES



FRAME TYPES



ROOM FINISH SCHEDULE										
ROOM	ROOM NAME	FLOOR	BASE	WALLS				CEILING FINISH	COMMENTS / NOTES	REVISIONS
				NORTH WALL	EAST WALL	SOUTH WALL	WEST WALL			
101	VESTIBULE	EXISTING	EXISTING	PT1	PT1	PT1	PT1	-		
102	WAITING	OFOI	OFOI	-	-	-	-	-	ALL WALLS PT1 UNLESS NOTED OTHERWISE ON PLAN	
103	LOBBY	OFOI	OFOI	-	-	-	-	-	ALL WALLS PT1 UNLESS NOTED OTHERWISE ON PLAN	
104	COPY	OFOI	OFOI	PT1	PT1	PT1	PT1	PT1		
105	RECORDS	OFOI	OFOI	PT1	PT1	PT1	PT1	-		
106	TALKING	OFOI	OFOI	-	-	-	-	-	ALL WALLS PT1 UNLESS NOTED OTHERWISE ON PLAN OR ELEVATION	
107	BEDROOM	OFOI	OFOI	MATCH BUILDING STANDARD	MATCH BUILDING STANDARD	MATCH BUILDING STANDARD	MATCH BUILDING STANDARD	MATCH BUILDING STANDARD		

FINISH MATERIAL LEGEND							
MARK	MATERIAL	MANUFACTURER	STYLE / PRODUCT	COLOR	SIZE	FINISH	NOTES
ACT1	ACOUSTICAL CEILING TILE	ARMSTRONG	ULTIMA FINE TEXTURE 9/16" BEVELED TEGULAR WITH SILHOUETTE XL 116"		2' X 4'		
AF1	APPLIED FILM	3FORM	REVEAL	XENA CHALK	5/8" WIDE		
PT1	PAINT	SHERWIN WILLIAMS	GECKO	7004 SNOWBOUND		EGG SHELL	
PT2	PAINT	SHERWIN WILLIAMS		6347 CHRYSANTHEMUM		EGG SHELL	
RP1	RESIN PANEL	3FORM	VARIA ECORESIN NATURALS	BEAR GRASS 50 PERCENT FADE GAUGE 1Z	REFER TO ELEVATION	SIDE 1: PATINA F02 / SIDE 2: PATINA F02	HARDWARE: 3FORM 200.08

KPB ARCHITECTS
 400 L STREET, SUITE 400
 ANCHORAGE, AK 99501
 (907) 271-7443 | (907) 271-7407
 WWW.KPBARCHITECTS.COM
 AK REGISTRATION # 24752-D

**SOUTHCENTRAL FOUNDATION
 DENA A. COY RENOVATION**
 ANCHORAGE, ALASKA

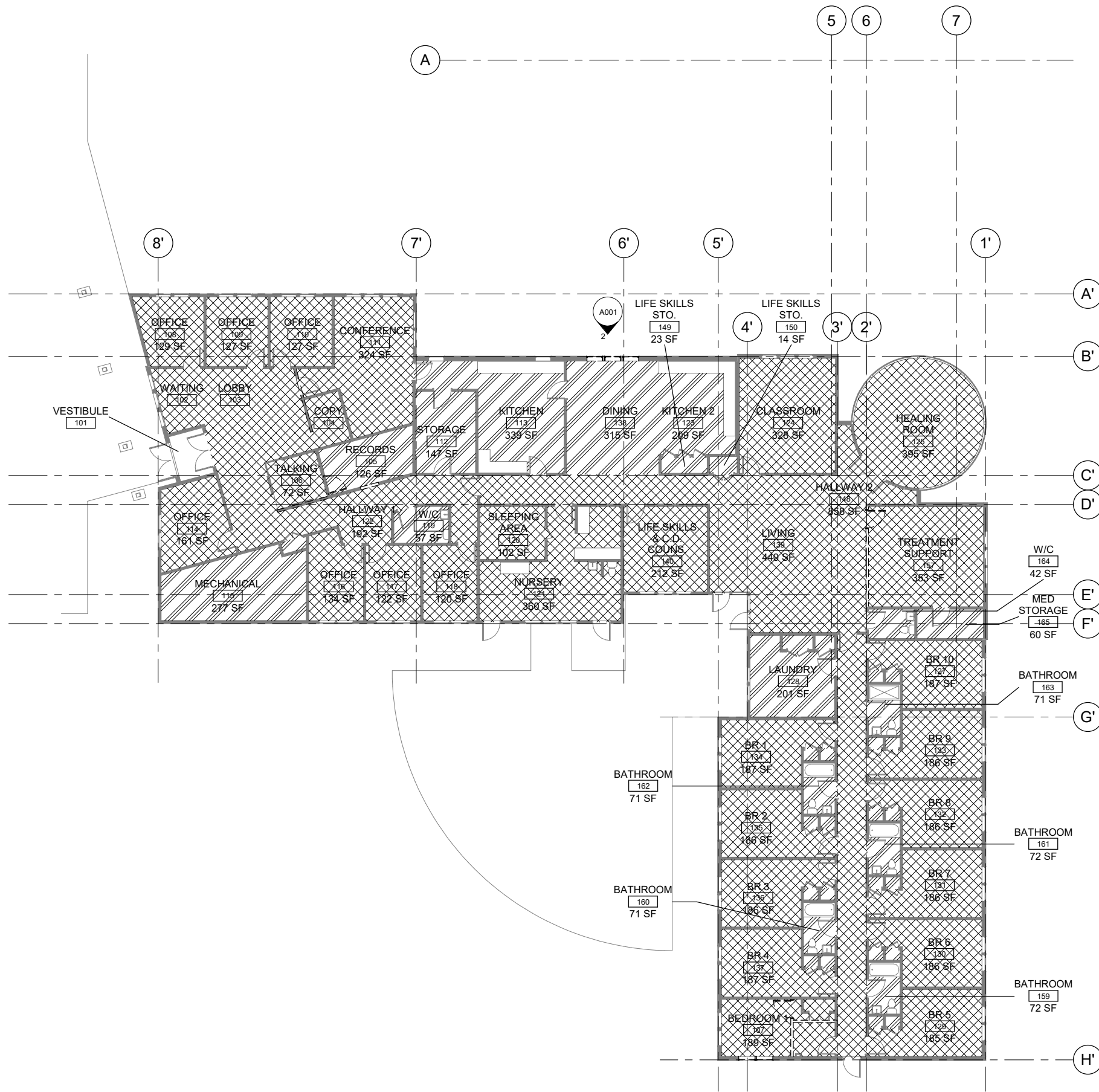
REVISION SCHEDULE	
#	DATE

JOB NO. 17009.01
 DATE 08/11/17
 DRAWN MKP,RS,JS
 REVIEWED MP

SHEET NAME
 FINISH AND DOOR
 SCHEDULE

SHEET NO.
A1.04

HALF SCALE AT 11x17



ROOM AREA & FINISH SCHEDULE				
ROOM	ROOM NAME	Area	Perimeter	Floor Finish
101	VESTIBULE	48 SF	28' - 0"	EM
102	WAITING	60 SF	32' - 11 1/4"	CPT
103	LOBBY	460 SF	117' - 3"	CPT
104	COPY	52 SF	29' - 2 1/2"	CPT
105	RECORDS	126 SF	47' - 9 3/4"	SV
106	TALKING	72 SF	34' - 4"	CPT
107	BEDROOM 1	189 SF	71' - 0"	CPT
108	OFFICE	129 SF	45' - 10 1/4"	CPT
109	OFFICE	127 SF	45' - 2 1/4"	CPT
110	OFFICE	127 SF	45' - 2 1/4"	CPT
111	CONFERENCE	324 SF	85' - 5 3/4"	CPT
112	STORAGE	147 SF	49' - 0"	SV
113	KITCHEN	339 SF	89' - 11 1/2"	SV
114	OFFICE	161 SF	51' - 4 1/2"	CPT
115	MECHANICAL	277 SF	77' - 4 3/4"	SV
116	OFFICE	134 SF	48' - 9 1/2"	CPT
117	OFFICE	122 SF	44' - 9"	CPT
118	OFFICE	120 SF	44' - 5 1/4"	CPT
119	W/C	57 SF	30' - 6"	SV
120	SLEEPING AREA	102 SF	40' - 8 1/2"	CPT
121	NURSERY	360 SF	118' - 3"	CPT
122	HALLWAY 1	192 SF	80' - 11"	CPT
123	KITCHEN 2	209 SF	58' - 1 1/4"	SV
124	CLASSROOM	328 SF	72' - 9 1/4"	CPT
125	HEALING ROOM	395 SF	71' - 8 3/4"	CPT
127	BR 10	187 SF	62' - 3 3/4"	CPT
128	LAUNDRY	201 SF	75' - 7"	SV
129	BR 5	185 SF	62' - 2 3/4"	CPT
130	BR 6	186 SF	62' - 3 3/4"	CPT
131	BR 7	186 SF	62' - 3 3/4"	CPT
132	BR 8	186 SF	62' - 3 3/4"	CPT
133	BR 9	186 SF	62' - 3 3/4"	CPT
134	BR 1	187 SF	62' - 3 1/2"	CPT
135	BR 2	186 SF	62' - 2 3/4"	CPT
136	BR 3	186 SF	62' - 2 3/4"	CPT
137	BR 4	187 SF	62' - 4"	CPT
138	DINING	315 SF	71' - 3 3/4"	SV
139	LIVING	440 SF	88' - 4 1/2"	CPT
140	LIFE SKILLS & C.D. COUNS.	212 SF	58' - 2 1/4"	CPT
148	HALLWAY 2	858 SF	363' - 5 1/2"	CPT
149	LIFE SKILLS STO.	23 SF	22' - 0 1/2"	SV
150	LIFE SKILLS STO.	14 SF	15' - 3 1/2"	SV
157	TREATMENT SUPPORT	353 SF	74' - 5 3/4"	CPT
159	BATHROOM	72 SF	46' - 1 3/4"	SV
160	BATHROOM	71 SF	46' - 3 1/2"	SV
161	BATHROOM	72 SF	46' - 3 3/4"	SV
162	BATHROOM	71 SF	46' - 3 1/2"	SV
163	BATHROOM	71 SF	45' - 11 1/4"	SV
164	W/C	42 SF	26' - 5 1/2"	SV
165	MED STORAGE	60 SF	33' - 4 3/4"	SV

FLOOR FINISH LEGEND

- CPT
- SV

1 FLOOR PLAN - FLOOR FINISHES
 1" = 10'-0"

REVISION SCHEDULE

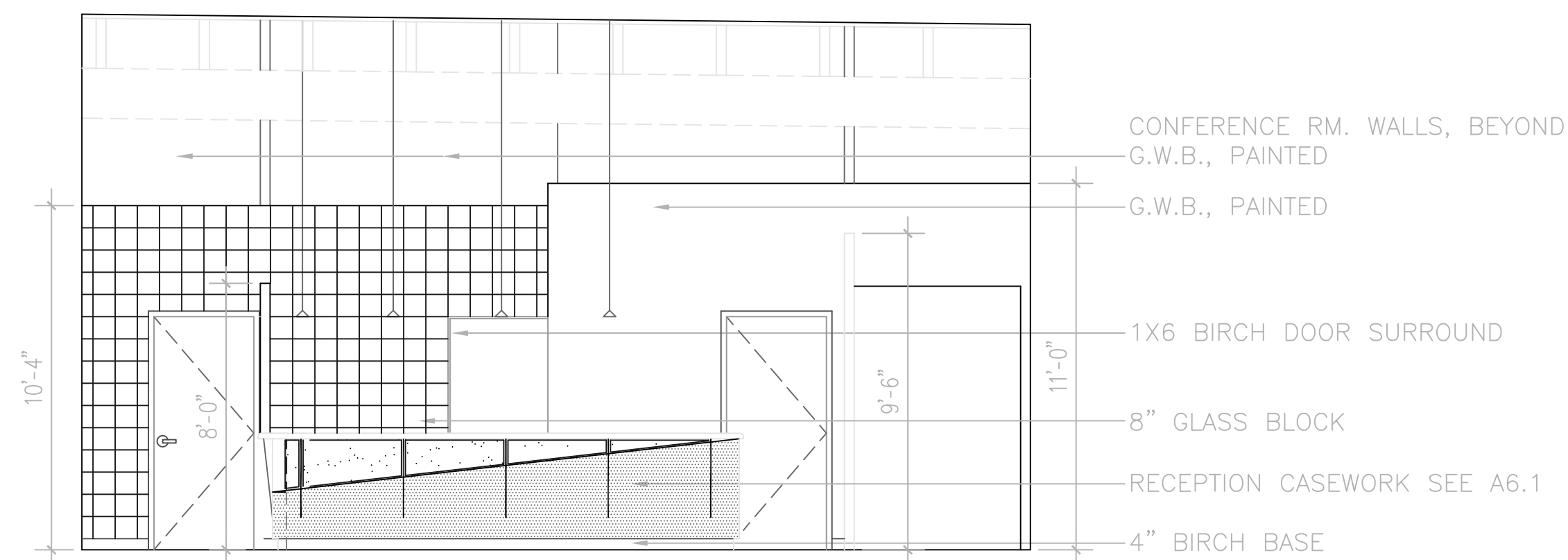
#	DESCRIPTION	DATE

JOB NO.	20054
DATE	1/10/20
DRAWN	
REVIEWED	

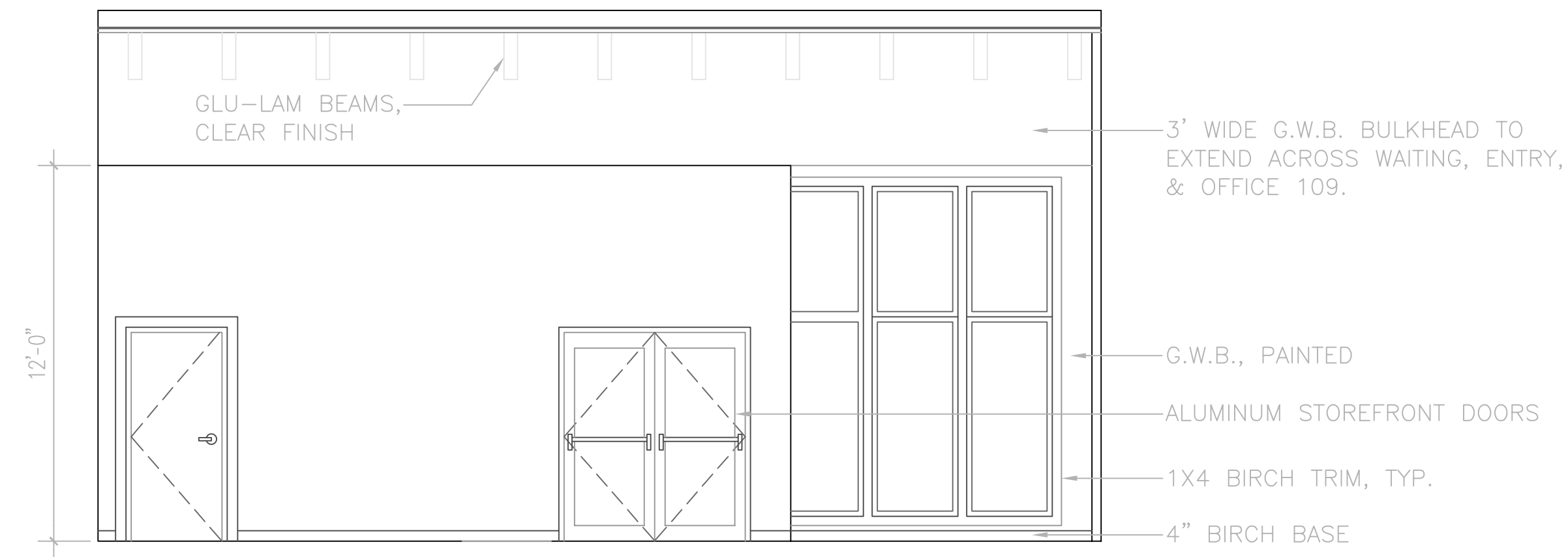
FLOOR PLAN - FLOOR FINISH

SHEET NO.

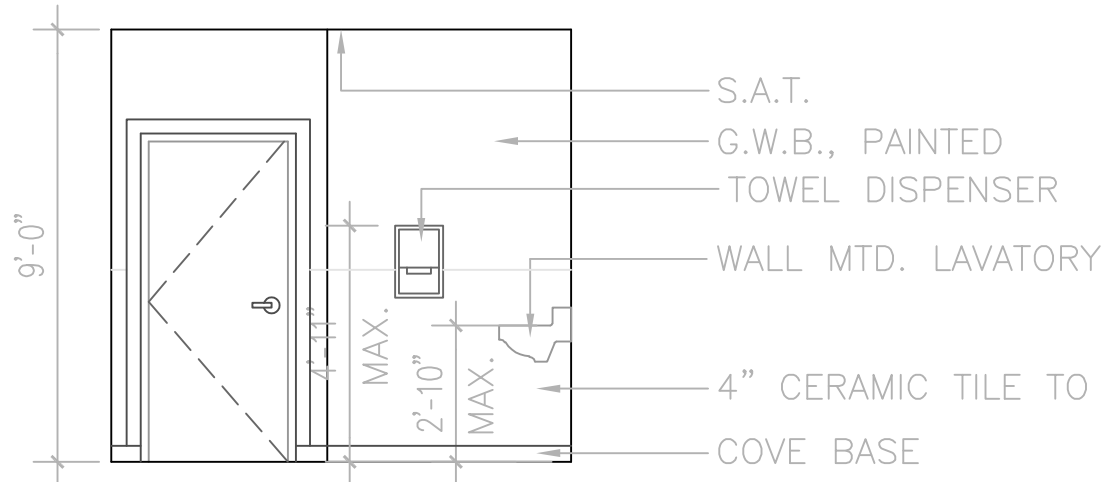
A 100



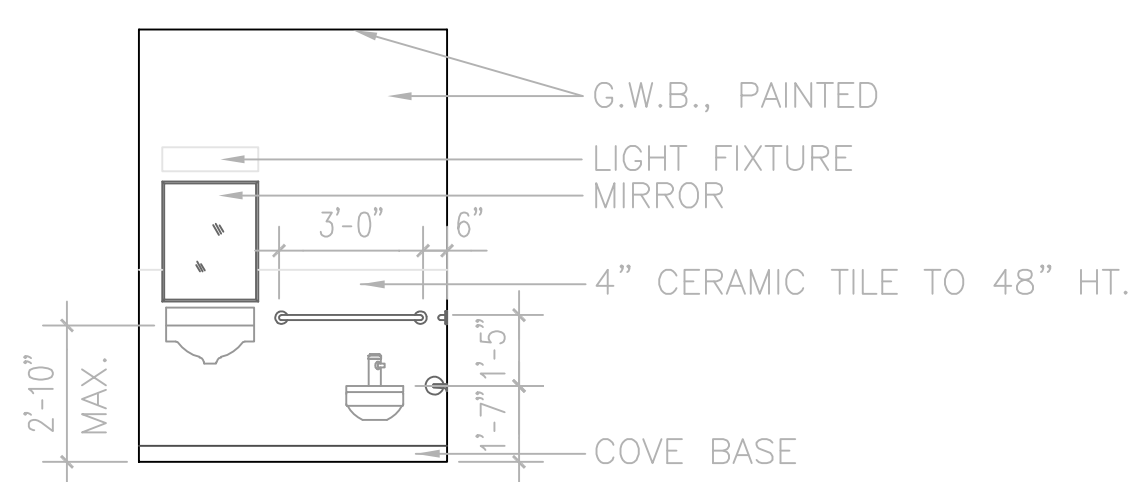
1 EAST ELEVATION RM. 101
1/4" = 1'-0"



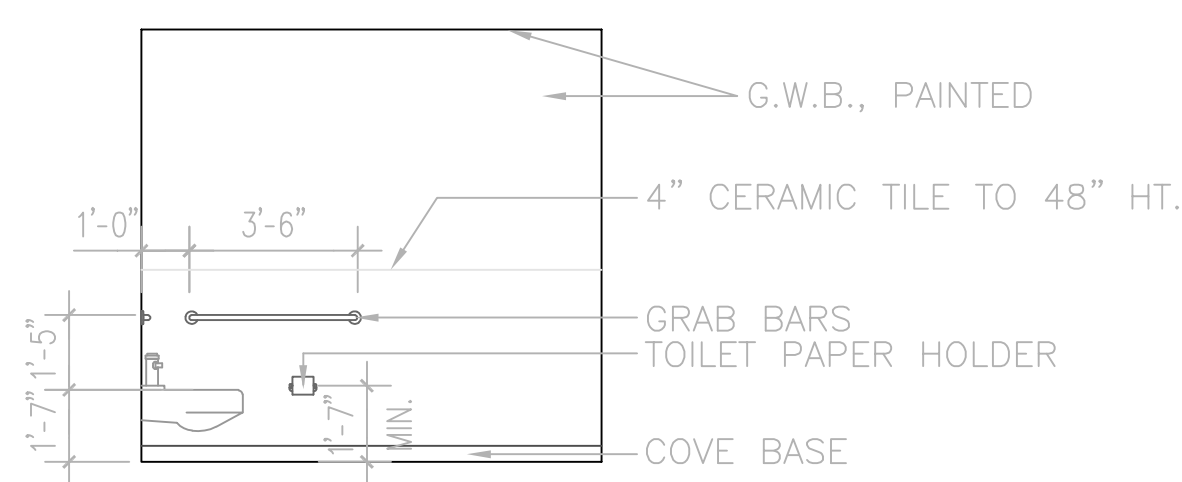
2 WEST ELEVATION RM. 101
1/4" = 1'-0"



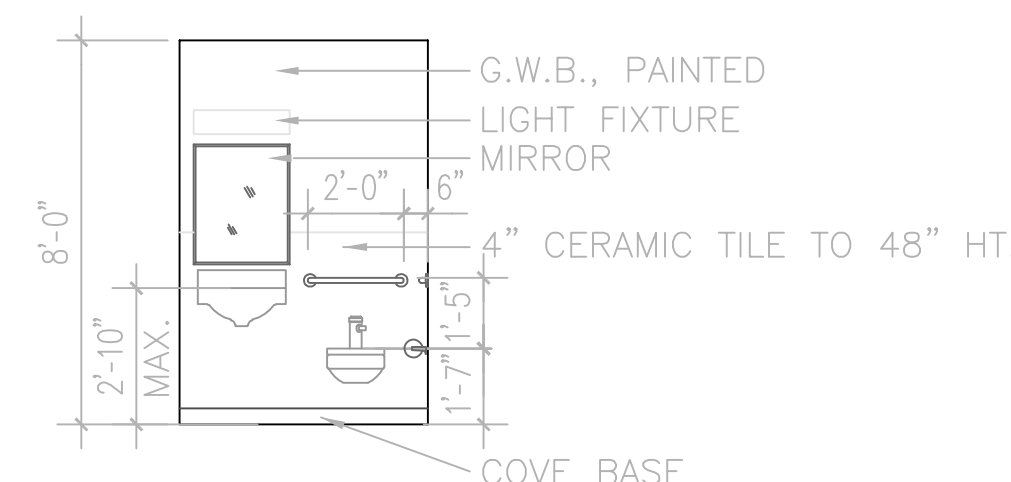
3 NORTH ELEVATION RM. 114
1/4" = 1'-0"



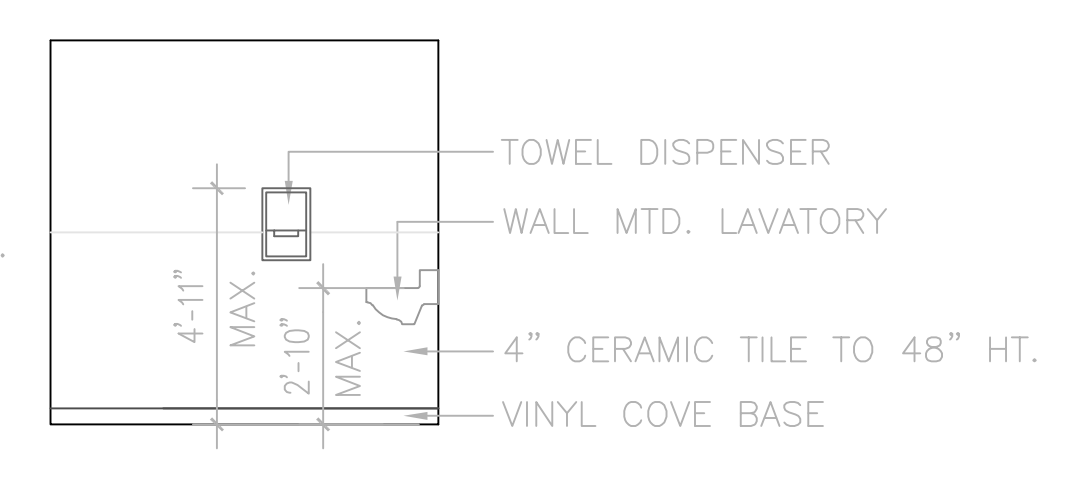
4 EAST ELEVATION RM. 114
1/4" = 1'-0"



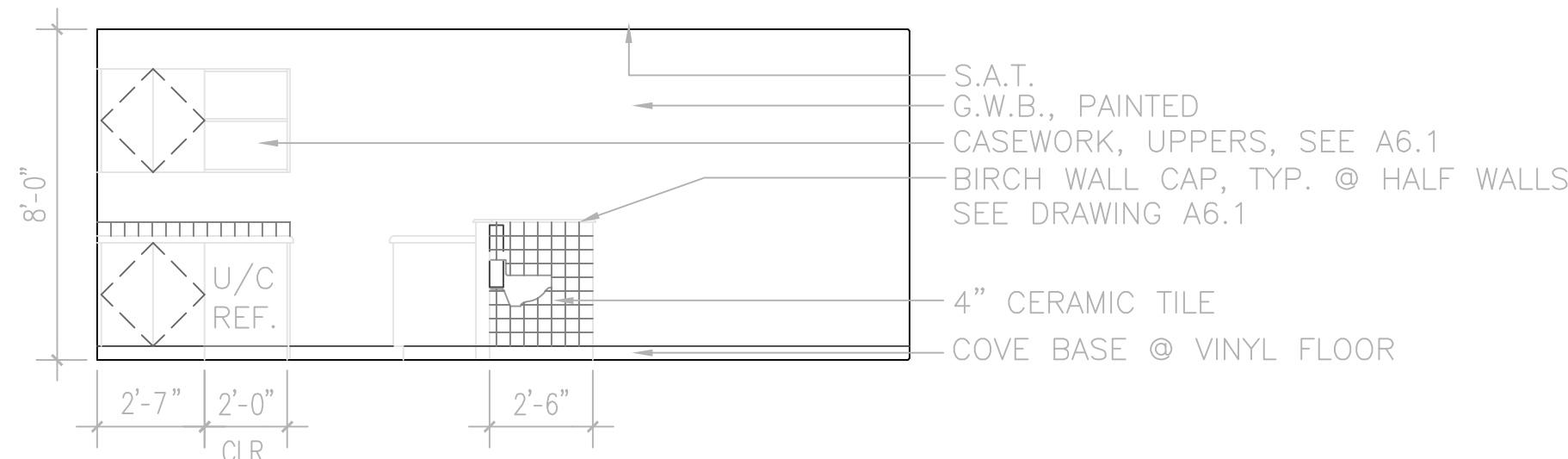
5 SOUTH ELEVATION RM. 114
1/4" = 1'-0"



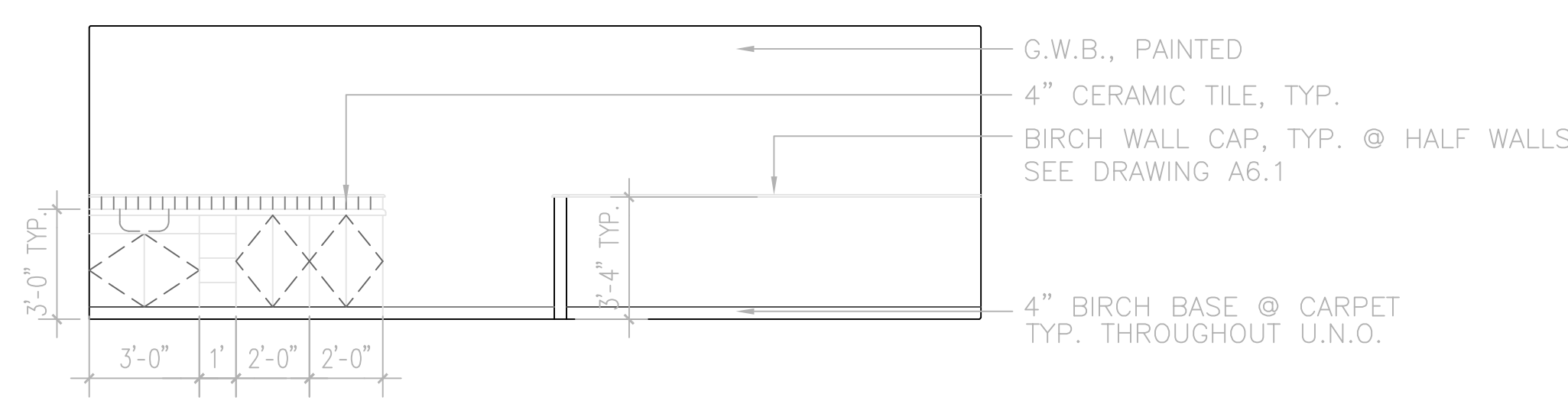
6 EAST ELEVATION RM. 143
1/4" = 1'-0"



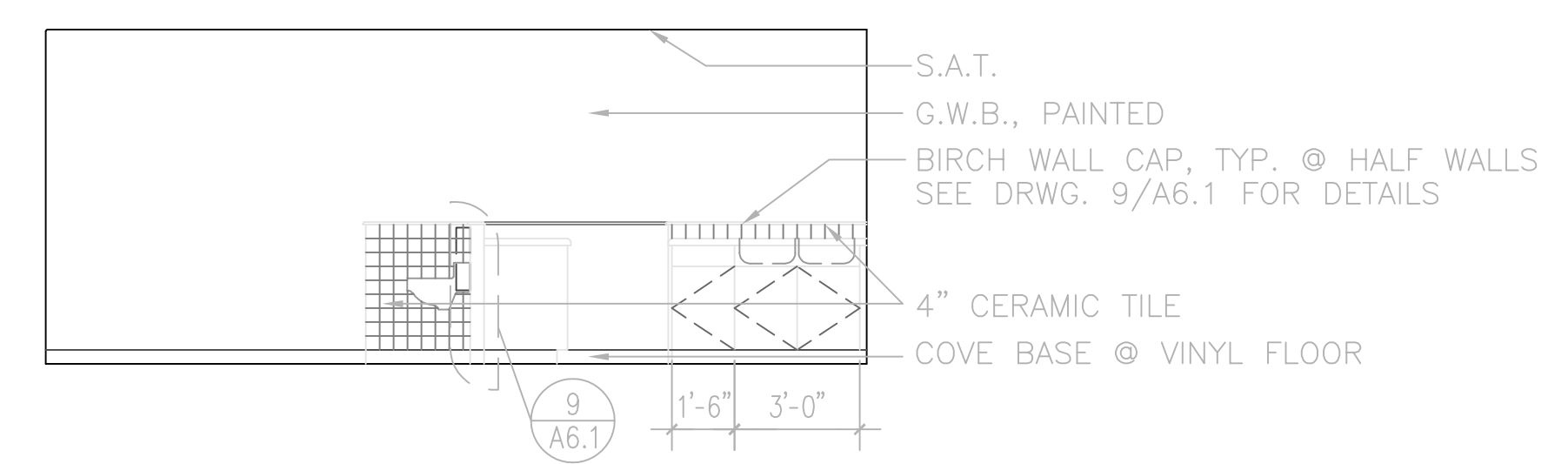
18 NORTH ELEVATION RM. 143
1/4" = 1'-0"



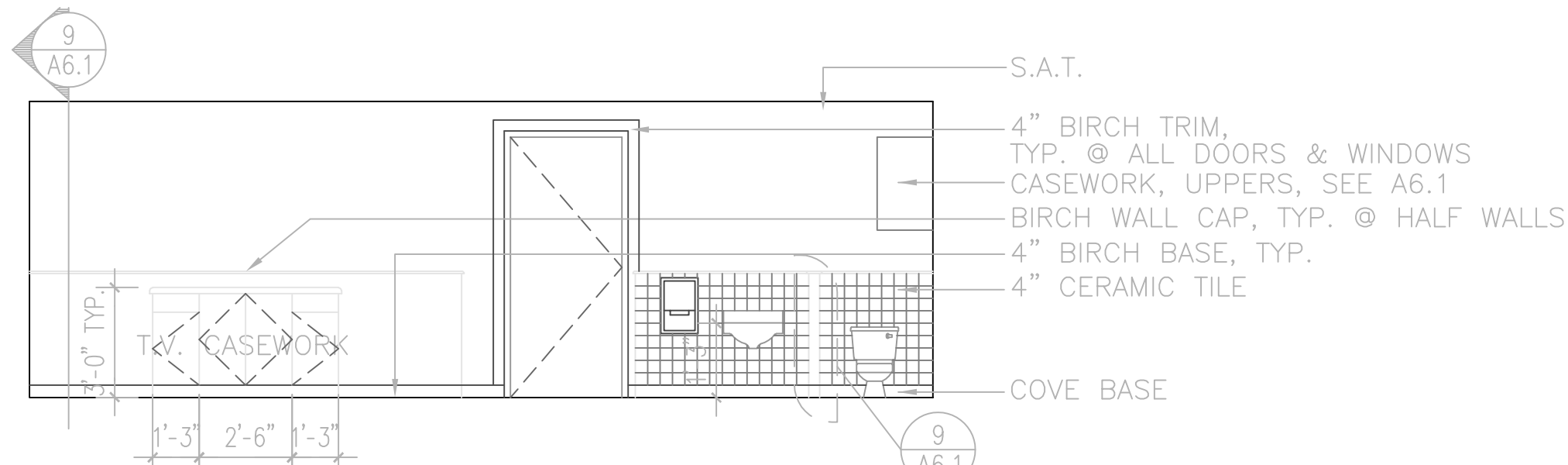
7 EAST ELEVATION RM. 121
1/4" = 1'-0"



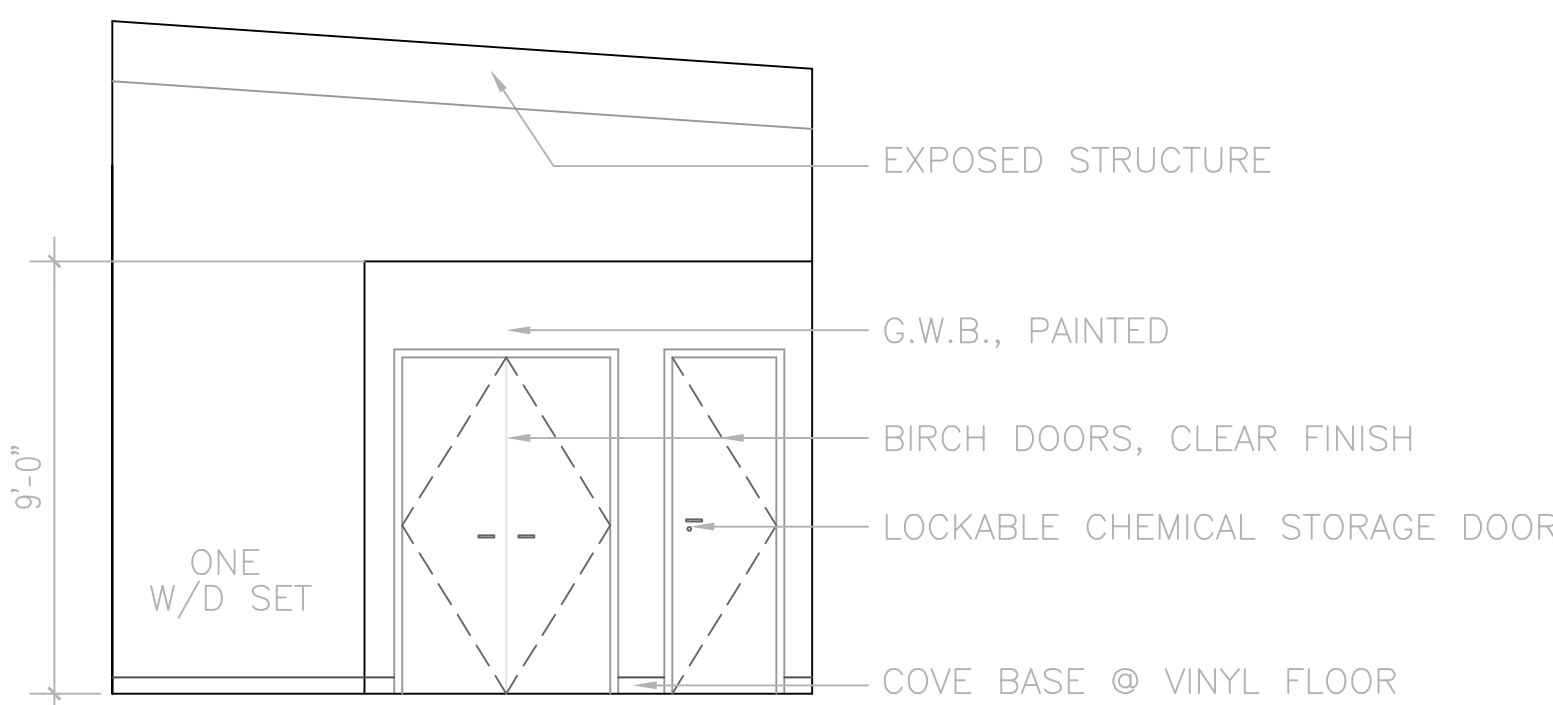
8 SOUTH ELEVATION RM. 121
1/4" = 1'-0"



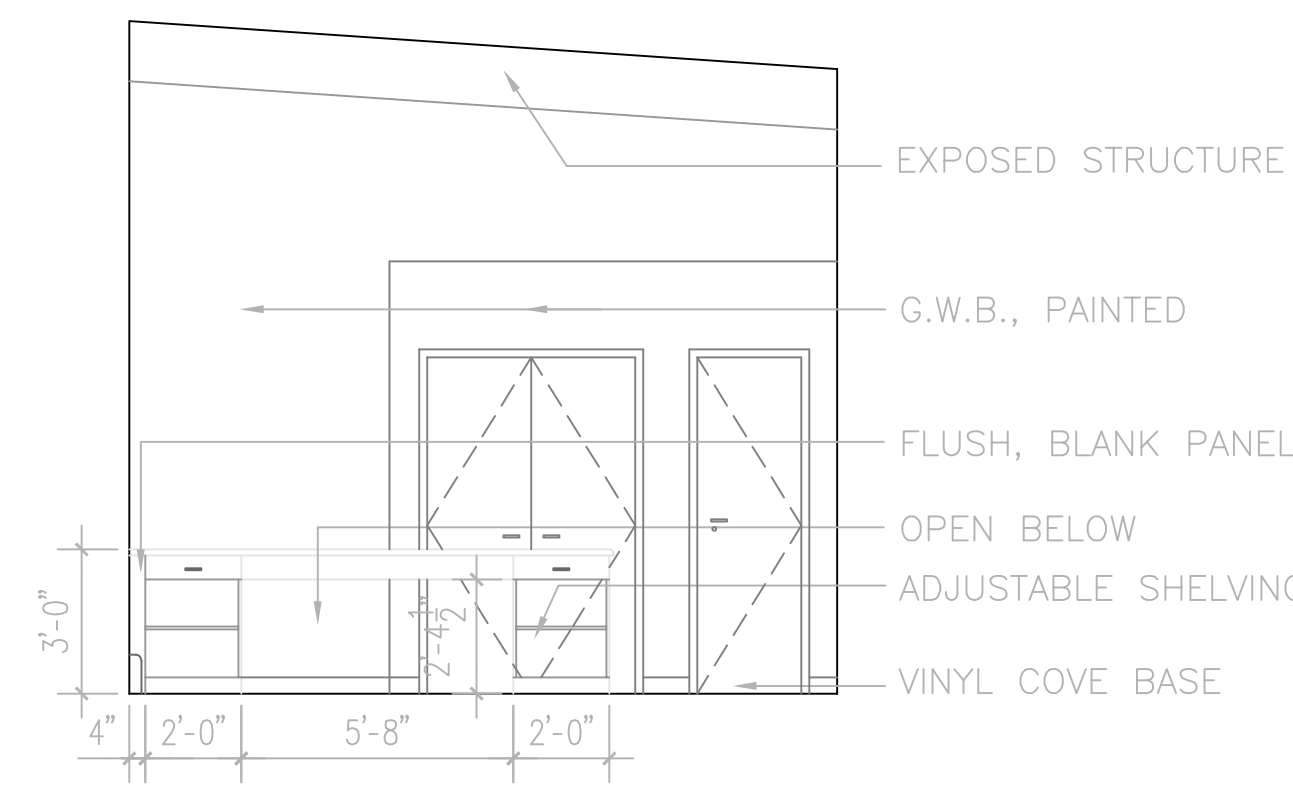
9 WEST ELEVATION RM. 121
1/4" = 1'-0"



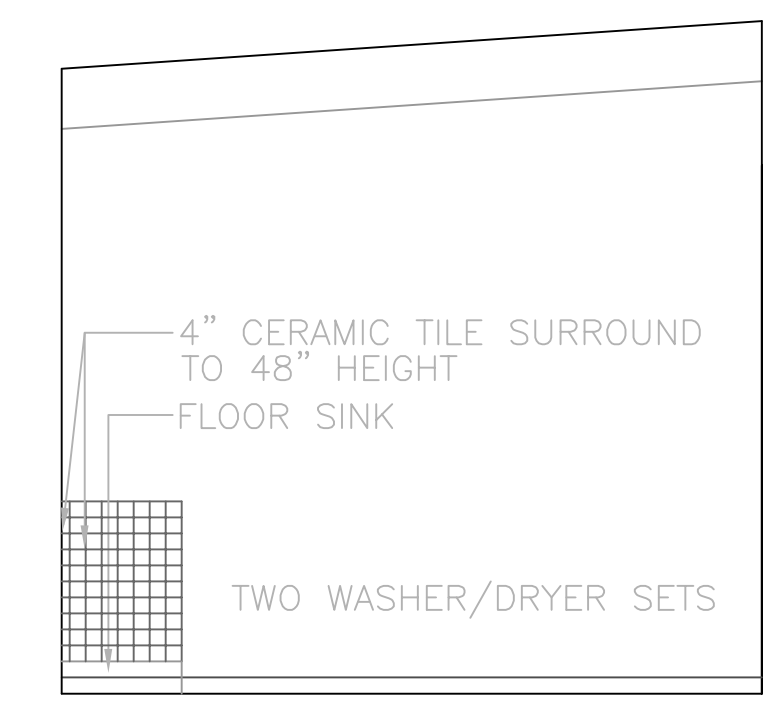
10 NORTH ELEVATION RM. 122
1/4" = 1'-0"



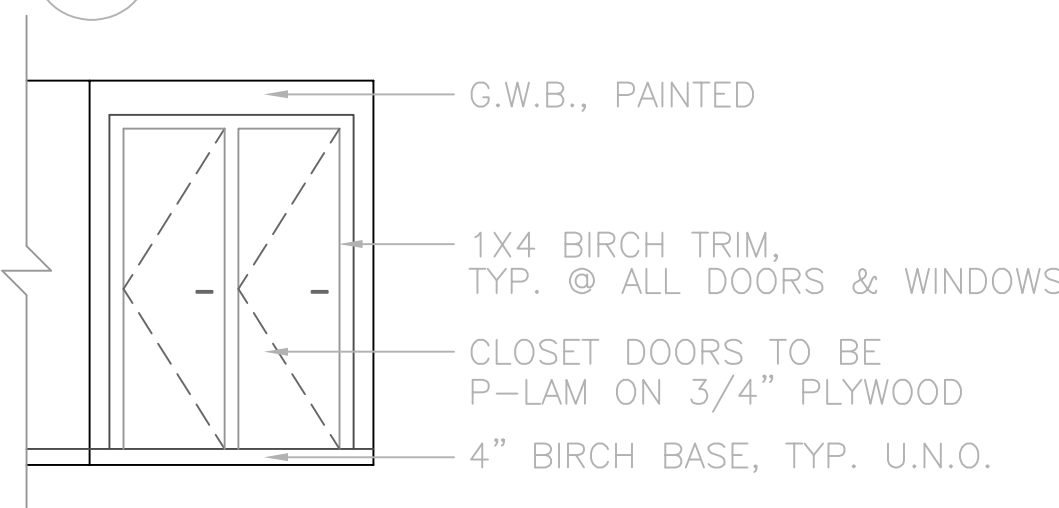
11 NORTH ELEVATION RM. 125
1/4" = 1'-0"



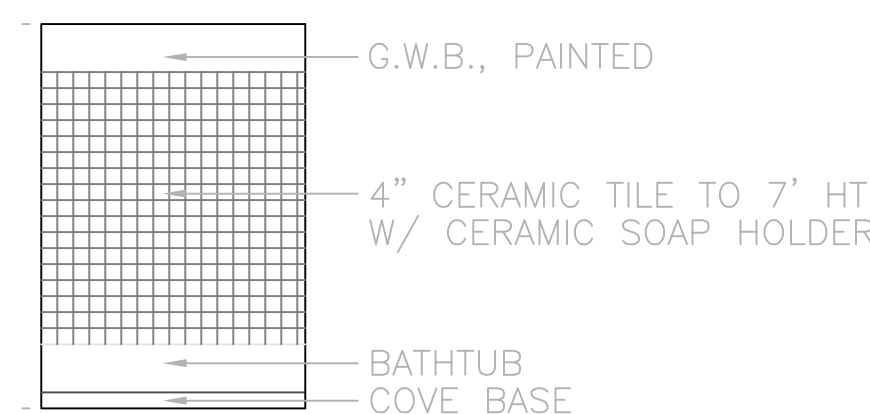
12 ELEVATION RM. 125
1/4" = 1'-0"



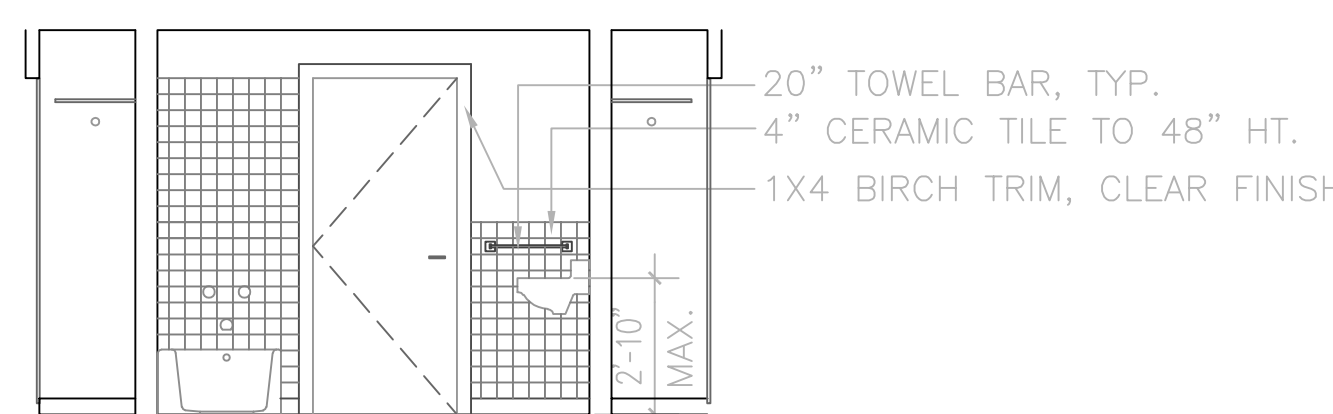
13 ELEVATION RM. 125
1/4" = 1'-0"



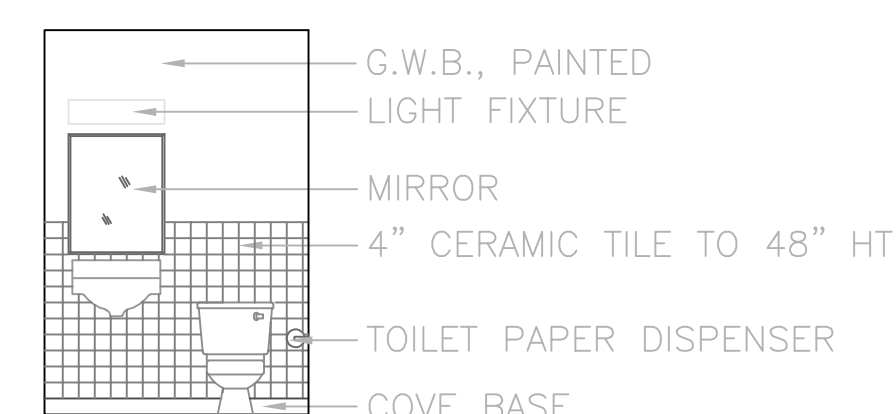
14 TYPICAL CLOSET ELEVATION
1/4" = 1'-0"



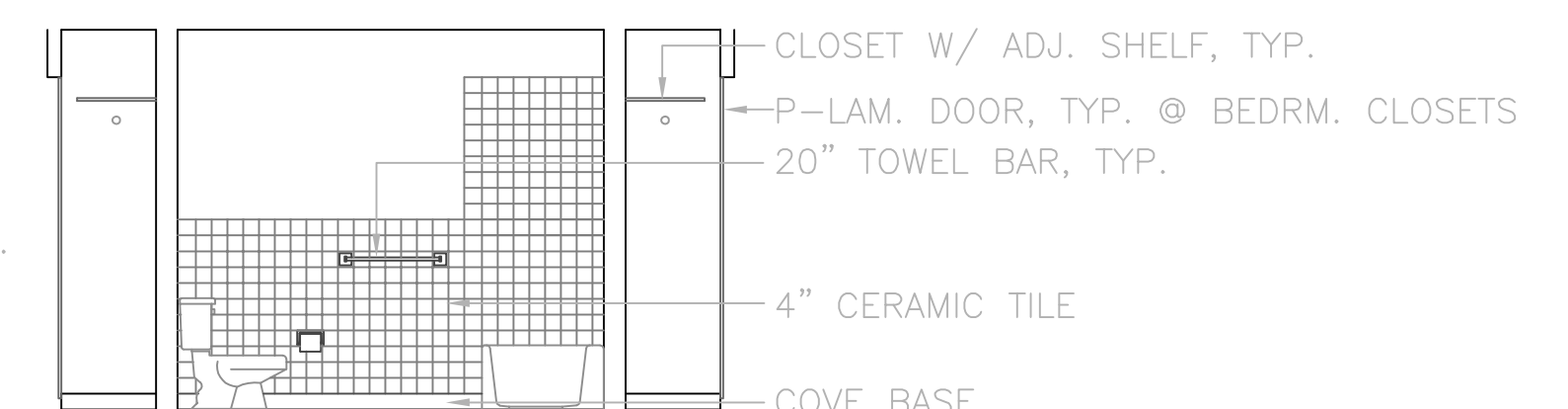
15 TYP. BATHROOM ELEV.
1/4" = 1'-0"



16 TYP. BATHROOM ELEV.
1/4" = 1'-0"



17 TYP. BATHROOM ELEV.
1/4" = 1'-0"



17 TYP. BATHROOM ELEV.
1/4" = 1'-0"

NOTE: ALL EQUIPMENT INCLUDED IN CONTRACT
UNLESS NOTED OTHERWISE

KOONCE PFEFFER BETTIS
architecture development interiors planning
425 G Street Suite 800 Anchorage, Alaska 99501
T. 907.274.7443 F. 907.274.7407 incorporated

DENA A COY
Anchorage, Alaska

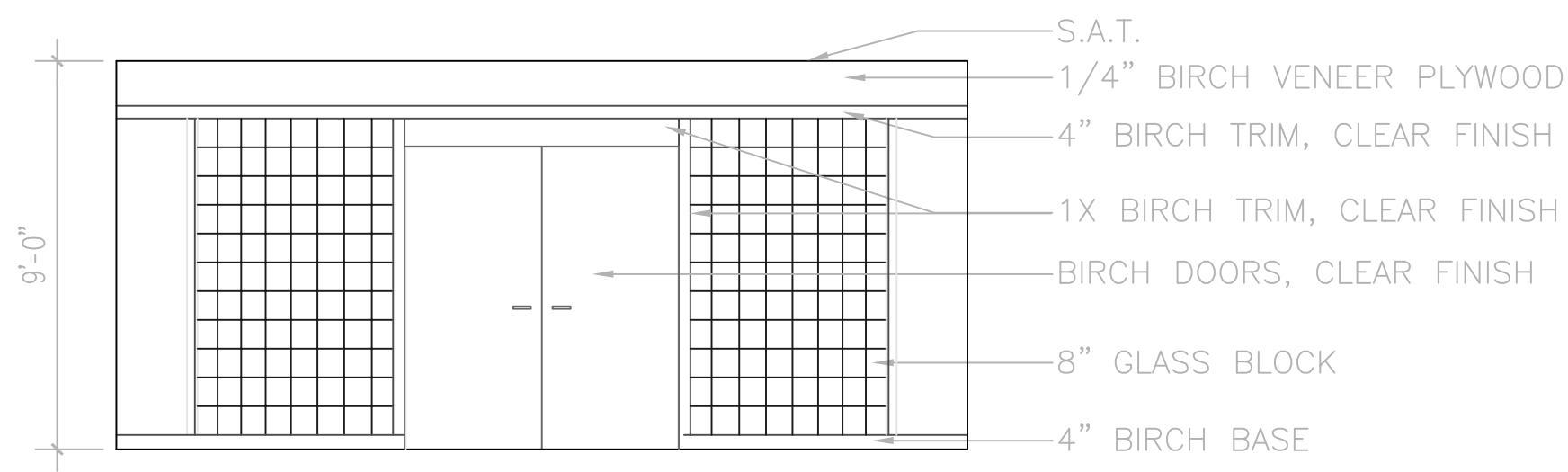
REVISIONS
03/31/00

100%
CONSTRUCTION
DRAWINGS

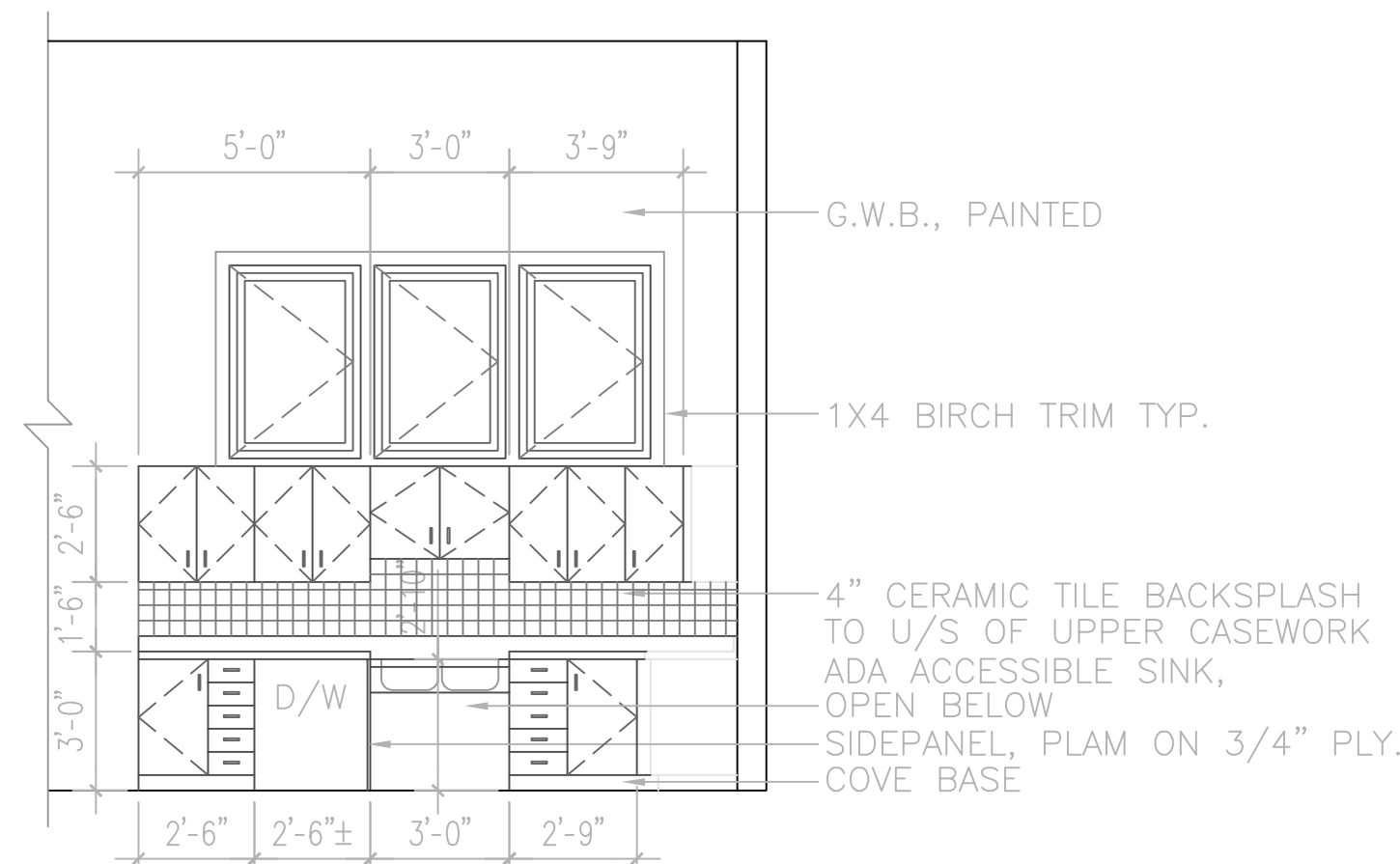
JOB NO. 98065.01
DATE 03/06/00
DRAWN D. Wlad
REVIEWED JPK

INTERIOR
ELEVATIONS

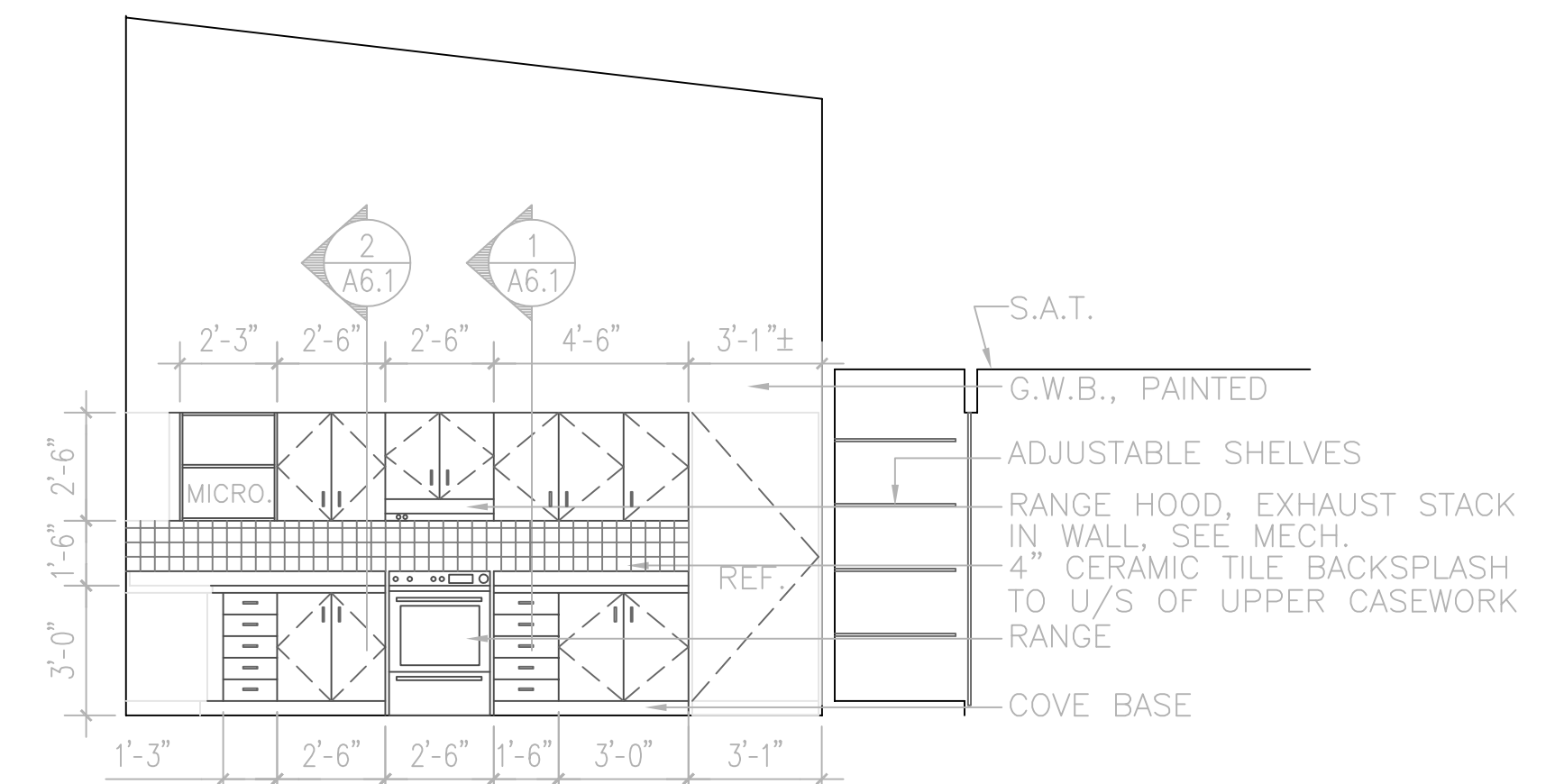
SHEET NO.
A5.1



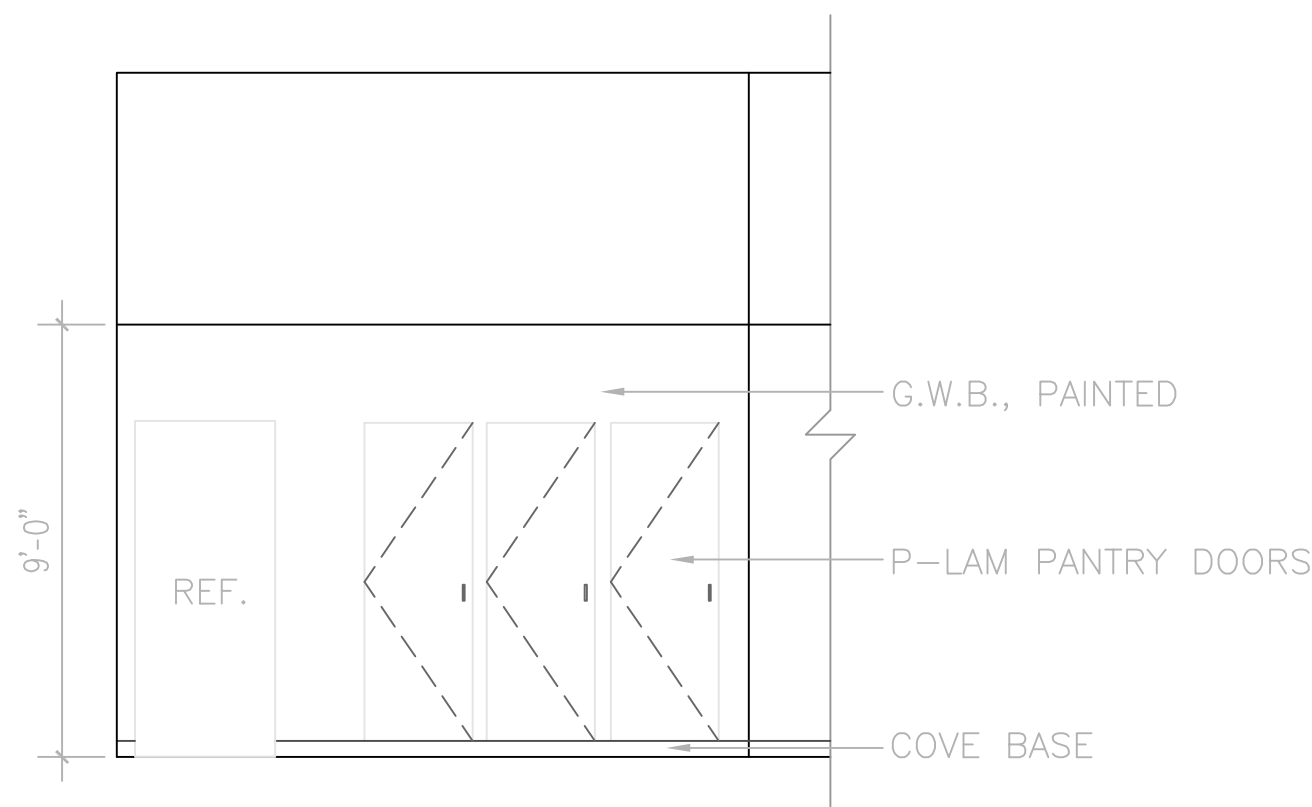
18 ELEVATION ENTRY ROOM 146
1/4" = 1'-0"



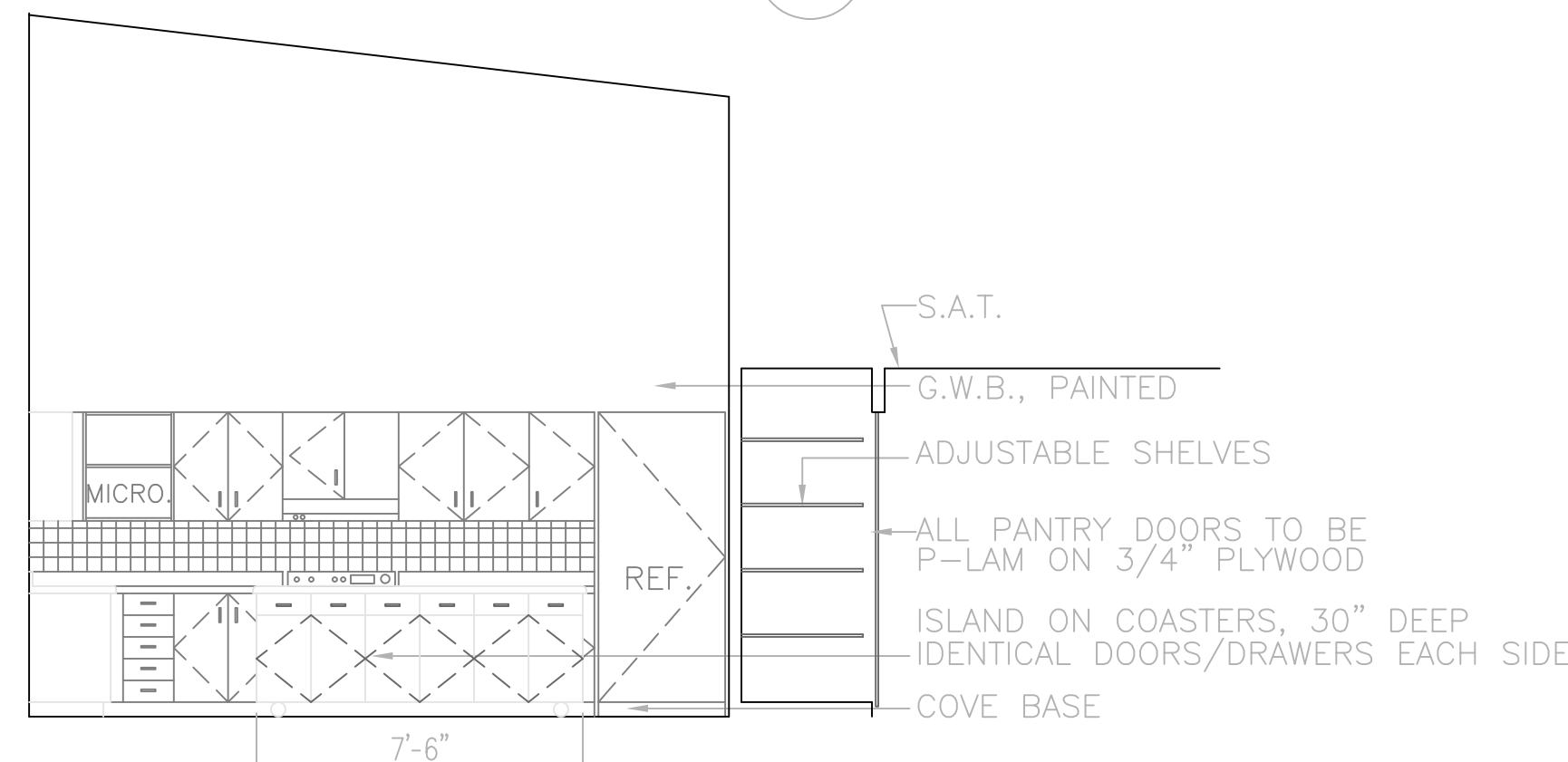
19 ELEVATION ROOM 117
1/4" = 1'-0"



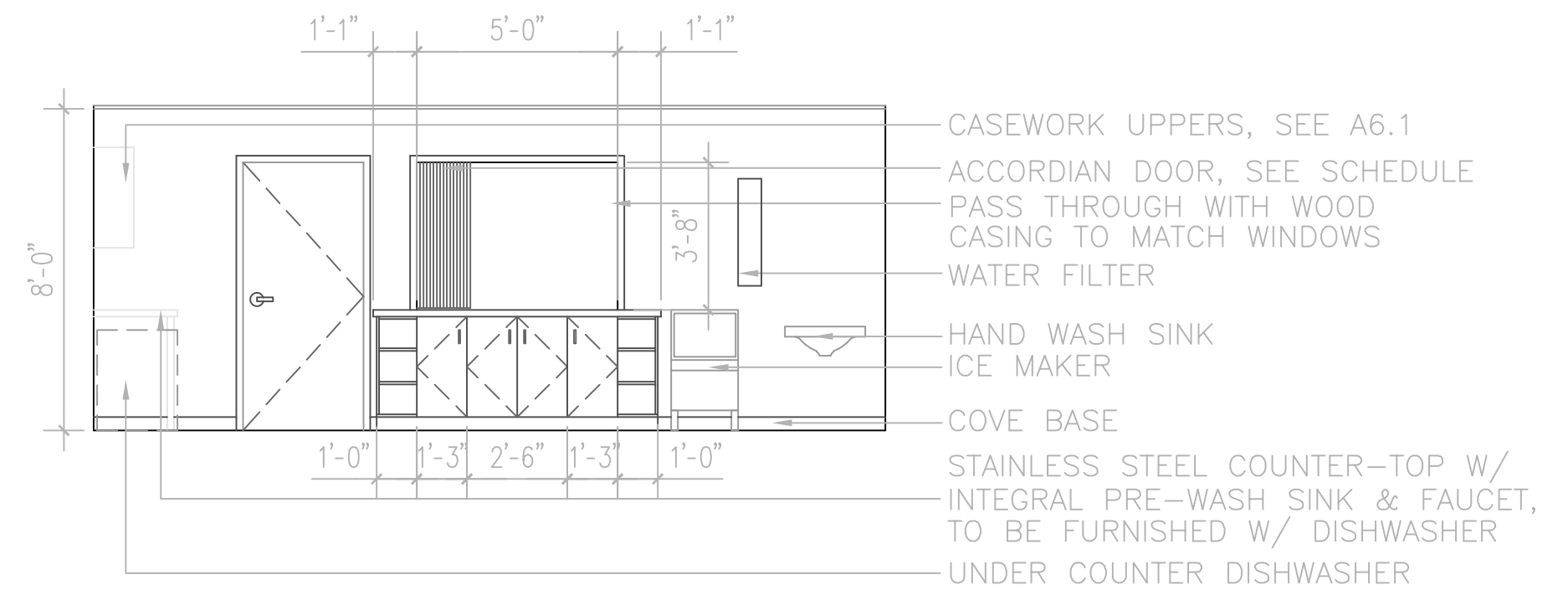
20 ELEVATION ROOM 117
1/4" = 1'-0"



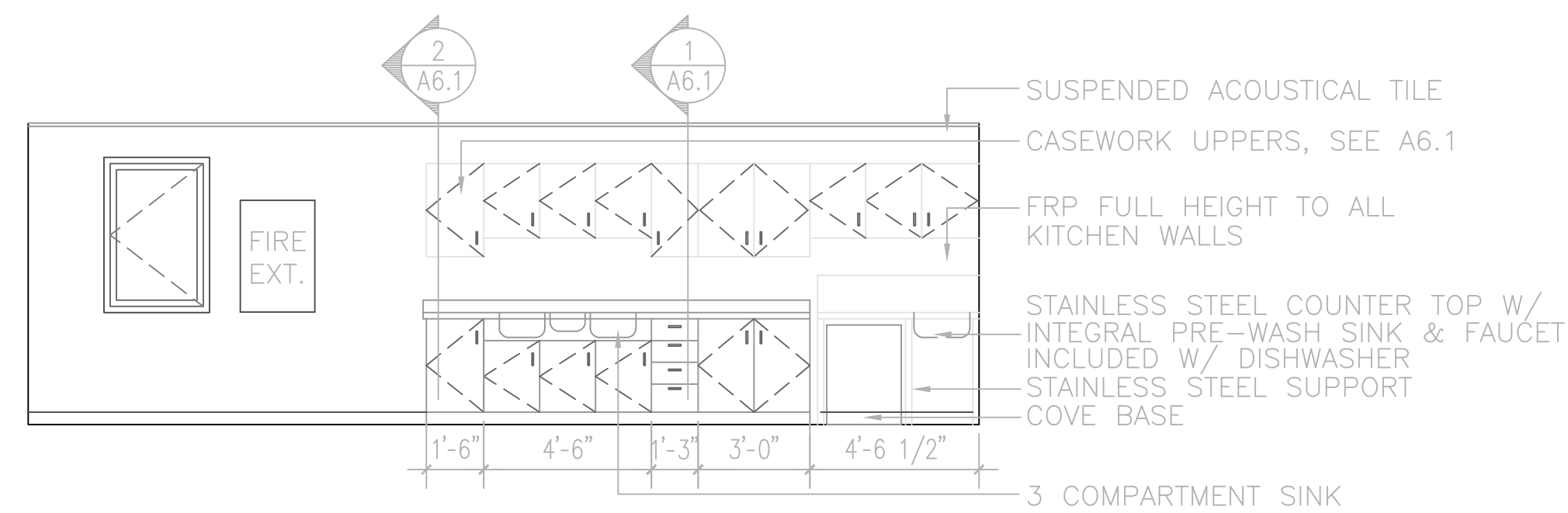
21 ELEVATION ROOM 117
1/4" = 1'-0"



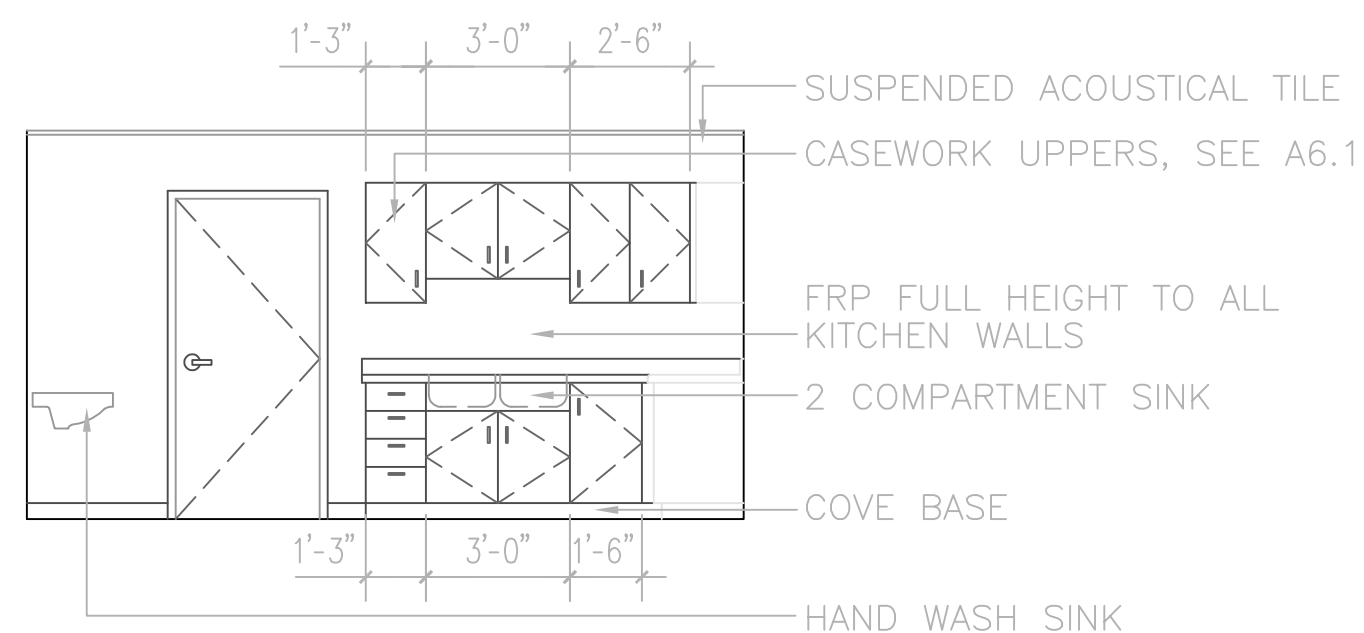
22 ELEVATION ROOM 117
1/4" = 1'-0"



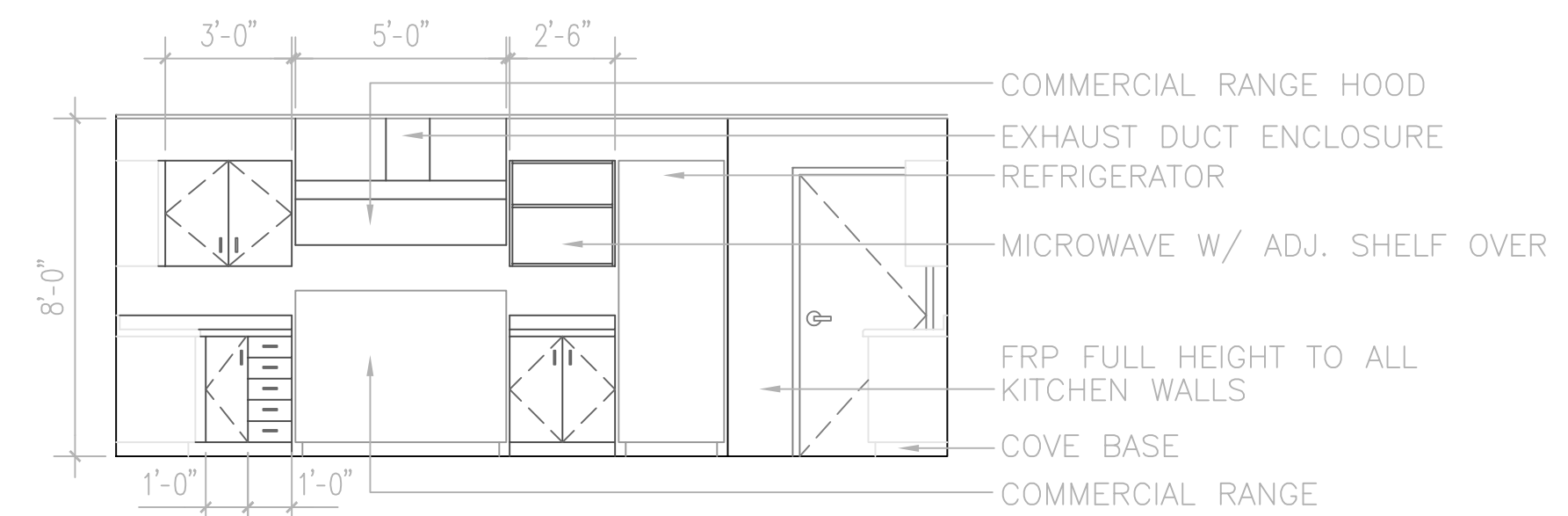
23 ELEVATION ROOM 115
1/4" = 1'-0"



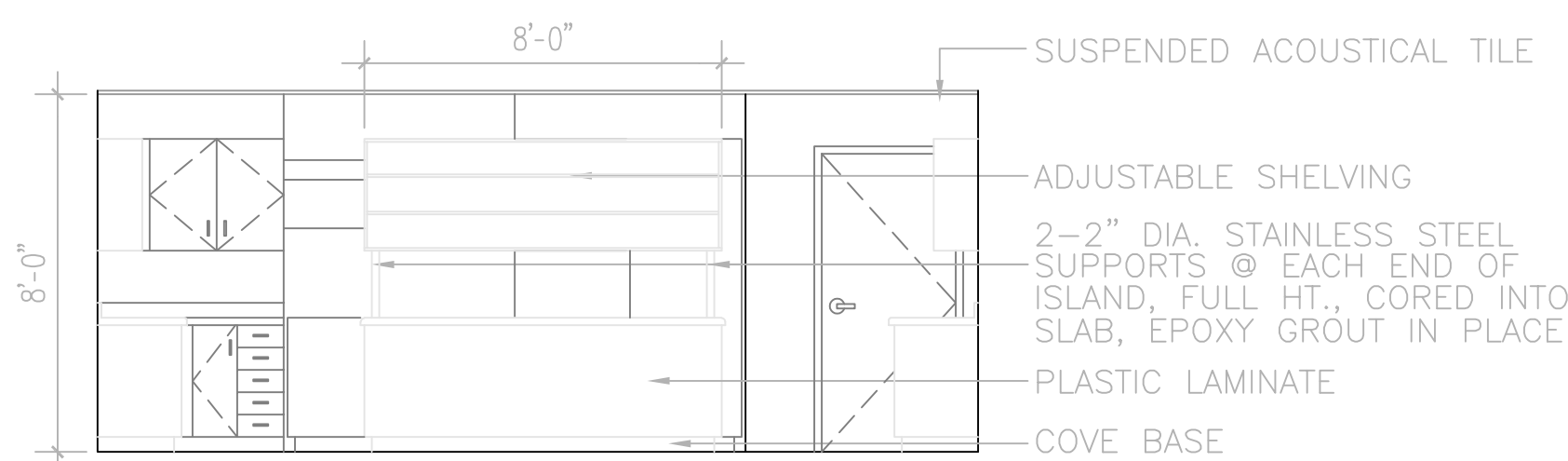
24 ELEVATION ROOM 115
1/4" = 1'-0"



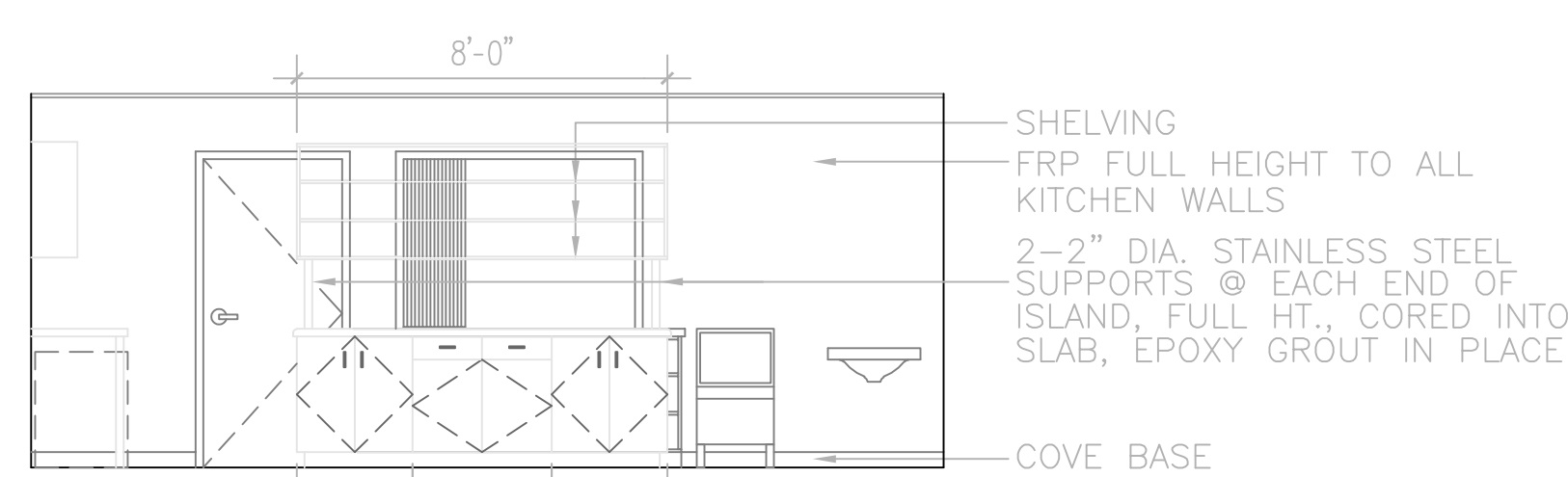
25 ELEVATION ROOM 115
1/4" = 1'-0"



26 ELEVATION ROOM 115
1/4" = 1'-0"



27 ELEVATION ROOM 115
1/4" = 1'-0"



28 ELEVATION ROOM 115
1/4" = 1'-0"

NOTE: ALL EQUIPMENT INCLUDED IN CONTRACT UNLESS NOTED OTHERWISE

KOONCE PFEFFER BETTIS
architecture development interiors planning
425 G Street Suite 800 Anchorage, Alaska 99501
T 907.274.7443 F 907.274.7407 incorporated

DENA A COY
Anchorage, Alaska

REVISIONS
03/31/00

100%
CONSTRUCTION
DOCUMENTS

JOB NO. 98065.01
DATE 03/06/00
DRAWN D. Wlad
REVIEWED JPK

INTERIOR
ELEVATIONS

SHEET NO.
A5.2



KOONCE PFEFFER BETTIS
 architecture development interiors planning
 425 G Street Suite 800 Anchorage, Alaska 99501
 T 907.274.7443 F 907.274.7407 incorporated

DENA A COY Anchorage, Alaska

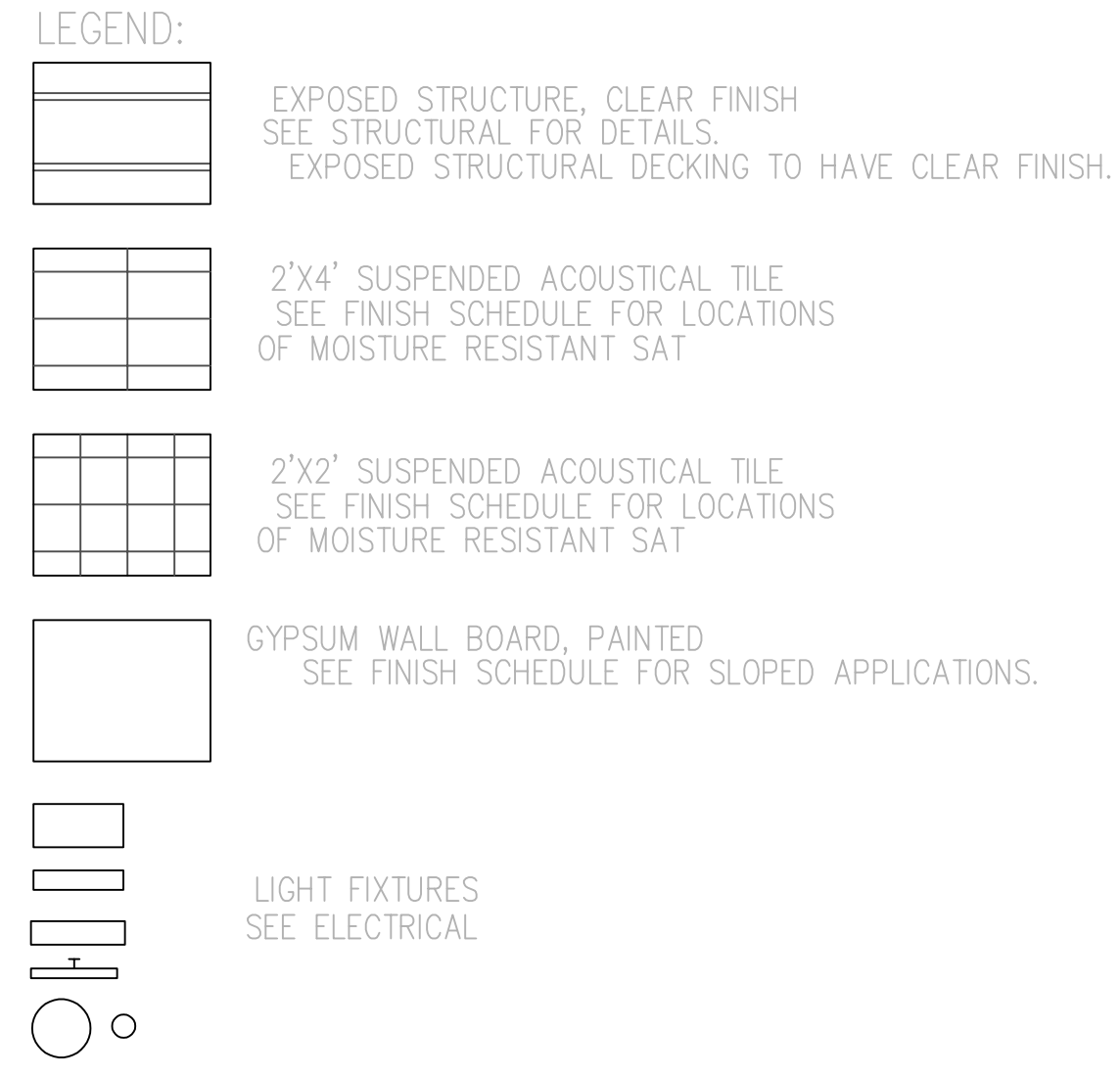
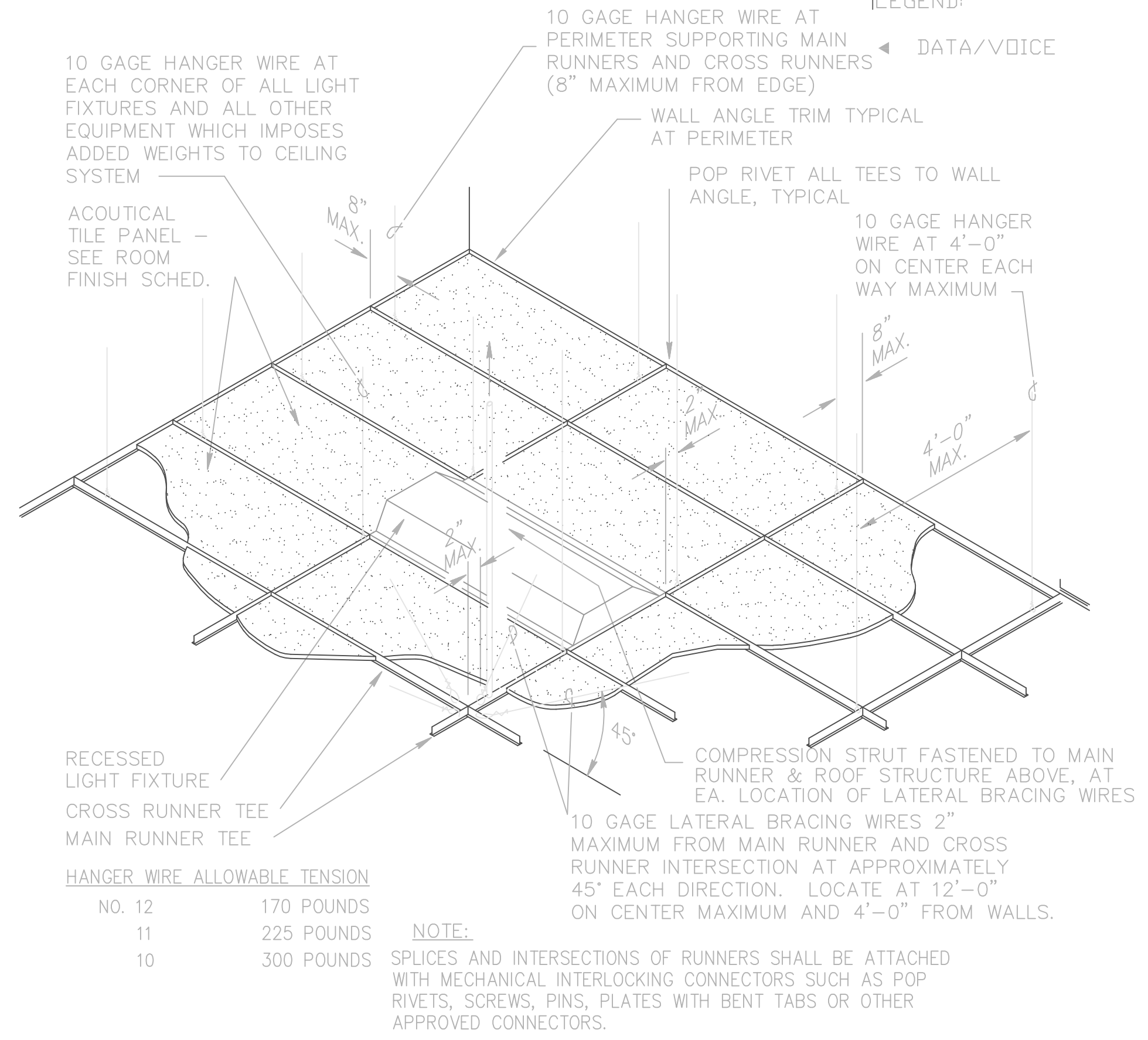
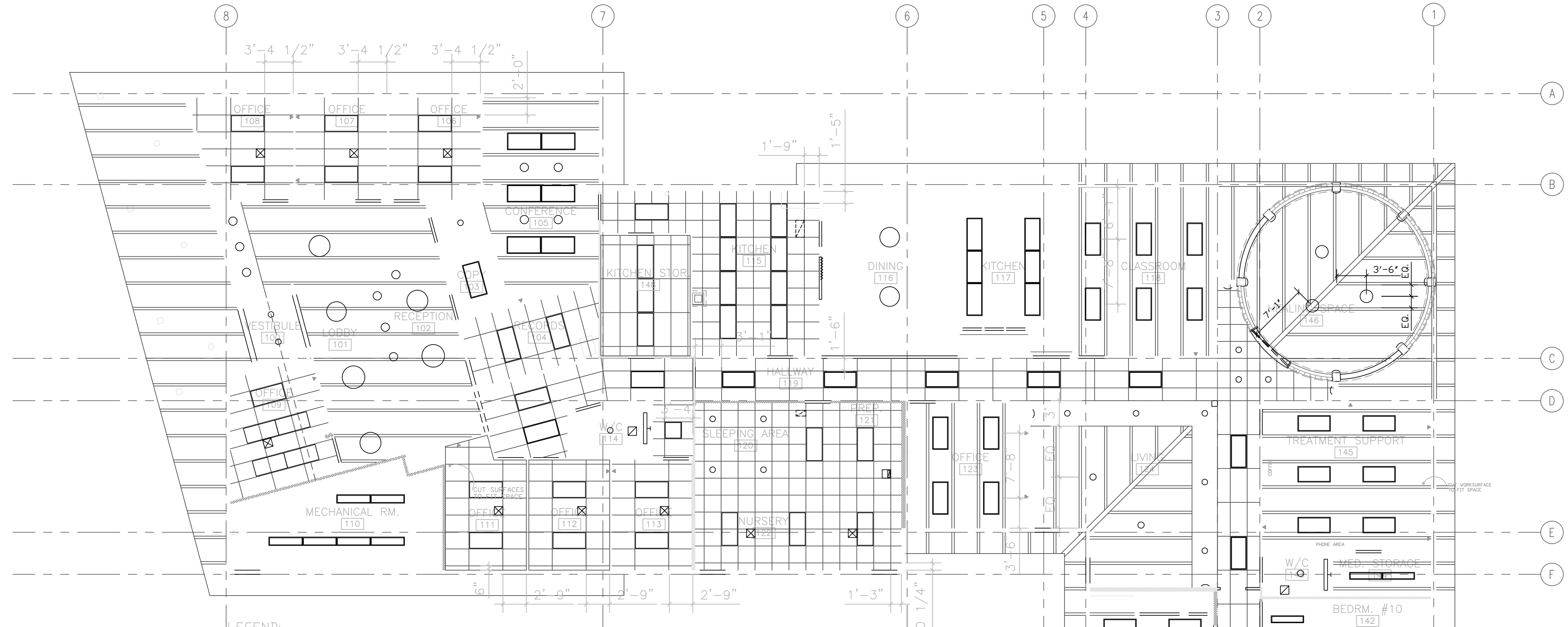
REVISIONS
03/31/00

100%
CONSTRUCTION
DOCUMENTS

JOB NO. 98065.01
DATE 03/06/00
DRAWN D. Wlad
REVIEWED JPK

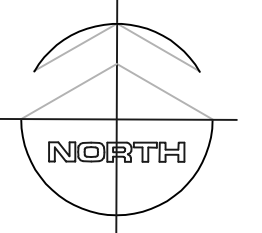
REFLECTED
CEILING PLAN

SHEET NO.
A2.3



NOTE: CONTRACTOR SHALL CO-ORDINATE SPRINKLER HEADS WITH ALL MECHANICAL & ELECTRICAL FIXTURES. SPRINKLER HEADS SHALL BE LOCATED AT CENTER OF CEILING TILE OR BETWEEN EXPOSED STRUCTURE.

1 REFLECTED CEILING PLAN
1/8" = 1'-0"



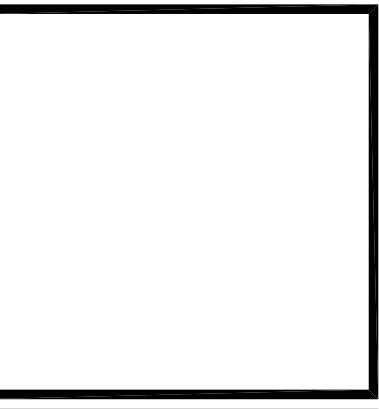
2 TYP. SAT SUSPENSION
NOT TO SCALE

SUSPENDED CEILING SHALL COMPLY w/ THE REQUIREMENTS OF THE 1994 U.B.C. STANDARDS NO. 25-2, PART 3 METAL SUSPENSION SYSTEMS for ACOUSTICAL TILE & for LAY-IN PANEL CEILINGS, AND INCLUDING BUT NOT LIMITED TO CURRENT M.O.A. REQUIREMENTS for LATERAL BRACING AND LIGHT FIXTURE SUPPORTS. THIS SHALL BE IN ACCORDANCE w/ NO. 23.15.4701(E) OF THE M.O.A. AMENDMENTS TO THE U.B.C., 1994 EDITION.

ROOM FINISH SCHEDULE

NO.	RM NAME	FLOOR		BASE		NORTH WALL		EAST WALL		SOUTH WALL		WEST WALL		CEILING			REMARKS	NO.
		MAT.	FINISH	MAT.	FINISH	MATERIAL	FINISH	MATERIAL	FINISH	MATERIAL	FINISH	MATERIAL	FINISH	MAT.	FINISH	HT.		
100	VESTIBULE	EM/CT	M1/CT3	CT - 4"		GWB	EP	GWB	EP	GWB	EP	GWB	EP	GWB		12'-0"		100
101	LOBBY	CPT	C1	WD	W1	GWB	EP	GWB	EP	GWB	EP	GWB	EP	EXP.		VARIES		101
102	RECEPTION	CPT	C1	WD	W1	GWB	EP	GWB	EP	GWB	EP	GWB	EP	EXP.		VARIES		102
103	COPY AREA	CPT	C1	WD	W1	GWB	EP	GWB	EP	GWB	EP	GWB	EP	SAT		8'-0"		103
104	RECORDS	SV	V1	WD	W1	GWB	EP	GWB	EP	GWB	EP	GWB	EP	SAT		8'-0"		104
105	CONFERENCE ROOM	CPT	C1/C4	WD	W1	GWB	EP	GWB	EP	GWB	EP	GWB	EP	G.W.B.		12'-0"		105
106	OFFICE	CPT	C1	WD	W1	GWB	EP	GWB	EP	GWB	EP	GWB	EP	SAT		12'-0"		106
107	OFFICE	CPT	C1	WD	W1	GWB	EP	GWB	EP	GWB	EP	GWB	EP	SAT		12'-0"		107
108	OFFICE	CPT	C1	WD	W1	GWB	EP	GWB	EP	GWB	EP	GWB	EP	SAT		12'-0"		108
109	OFFICE	CPT	C1	WD	W1	GWB	EP	GWB	EP	GWB	EP	GWB	EP	SAT		12'-0"		109
110	MECHANICAL ROOM	SV	V1	RBR	R1	GWB	SGP	GWB	SGP	GWB	SGP	GWB	SGP	G.W.B.		8'-0"	1hr SEP. REQD.	110
111	OFFICE	CPT	C1	WD	W1	GWB	EP	GWB	EP	GWB	EP	GWB	EP	SAT		8'-0"		111
112	OFFICE	CPT	C1	WD	W1	GWB	EP	GWB	EP	GWB	EP	GWB	EP	SAT		8'-0"		112
113	OFFICE	CPT	C1	WD	W1	GWB	EP	GWB	EP	GWB	EP	GWB	EP	SAT		8'-0"		113
114	STAFF W/C	SV	V2	COVE	V2	GWB/CT2	SGP	GWB/CT2	SGP	GWB/CT2	SGP	GWB/CT2	SGP	G.W.B.		8'-0"	1	114
115	KITCHEN	SV	V1	COVE	V1	GWB/CT1	SGP	GWB/CT1	SGP	GWB/CT1	SGP	GWB/CT1	SGP	SAT		9'-0"	1	115
116	DINING	SV	V1	COVE	V1	GWB	SGP	GWB	SGP	GWB	SGP	GWB	SGP	G.W.B.		VARIES		116
117	LIFE SKILLS KITCHEN	SV	V1	COVE	V1	GWB/CT1	SGP	GWB/CT1	SGP	GWB/CT1	SGP	GWB/CT1	SGP	G.W.B.		VARIES	1	117
118	CLASSROOM	CPT	C1/C4	WD	W1	GWB	EP	GWB	EP	GWB	EP	GWB	EP	EXP.		VARIES		118
119	HALLWAY #1	CPT	C1/C4	WD	W1	GWB	EP	GWB	EP	GWB	EP	GWB	EP	SAT.		8'-0"		119
120	SLEEPING AREA	CPT	C5	WD	W1	GWB	SGP	GWB	SGP	GWB	SGP	GWB	SGP	SAT.		8'-0"		120
121	PREPARATION AREA	SV	V3	COVE	V3	GWB	SGP	GWB	SGP	GWB	SGP	GWB	SGP	SAT.		8'-0"		121
122	NURSERY	CPT	C5	WD	W1	GWB	SGP	GWB	SGP	GWB	SGP	GWB	SGP	SAT.		8'-0"		122
123	OFFICE	CPT	C1/C4	WD	W1	GWB	EP	GWB	EP	GWB	EP	GWB	EP	EXP.		VARIES		123
124	LIVING	CPT	C3/C4	WD	W1	GWB	EP	GWB	EP	GWB	EP	GWB	EP	EXP.		VARIES		124
125	LAUNDRY	SV	V2	COVE	V2	GWB	SGP	GWB	SGP	GWB	SGP	GWB	SGP	EXP.		VARIES	1, 1hr SEP. REQD.	125
126	BEDROOM #1	CPT	C3	WD	W1	GWB	EP	GWB	EP	GWB	EP	GWB	EP	G.W.B.		8'-0"		126
127	BATHROOM #1	SV	V2	COVE	V2	GWB/CT2	SGP	GWB/CT2	SGP	GWB/CT2	SGP	GWB/CT2	SGP	G.W.B.		8'-0"	1	127
128	BEDROOM #2	CPT	C3	WD	W1	GWB	EP	GWB	EP	GWB	EP	GWB	EP	G.W.B.		8'-0"		128
129	BEDROOM #3	CPT	C3	WD	W1	GWB	EP	GWB	EP	GWB	EP	GWB	EP	G.W.B.		8'-0"		129
130	BATHROOM #2	SV	V2	COVE	V2	GWB/CT2	SGP	GWB/CT2	SGP	GWB/CT2	SGP	GWB/CT2	SGP	G.W.B.		8'-0"	1	130
131	BEDROOM #4	CPT	C3	WD	W1	GWB	EP	GWB	EP	GWB	EP	GWB	EP	G.W.B.		8'-0"		131
132	OFFICE	CPT	C1	WD	W1	GWB	EP	GWB	EP	GWB	EP	GWB	EP	SAT.		8'-0"		132
133	STORAGE	SV	V2	WD	W1	GWB	SGP	GWB	SGP	GWB	SGP	GWB	SGP	G.W.B.		8'-0"	4	133
134	BEDROOM #5	CPT	C3	WD	W1	GWB	EP	GWB	EP	GWB	EP	GWB	EP	G.W.B.		VARIES		134
135	BATHROOM #3	SV	V1	COVE	V1	GWB/CT1	SGP	GWB/CT1	SGP	GWB/CT1	SGP	GWB/CT1	SGP	G.W.B.		8'-0"	1	135
136	BEDROOM #6	CPT	C3	WD	W1	GWB	EP	GWB	EP	GWB	EP	GWB	EP	G.W.B.		VARIES		136
137	BEDROOM #7	CPT	C3	WD	W1	GWB	EP	GWB	EP	GWB	EP	GWB	EP	G.W.B.		VARIES		137
138	BATHROOM #4	SV	V1	COVE	V1	GWB/CT1	SGP	GWB/CT1	SGP	GWB/CT1	SGP	GWB/CT1	SGP	G.W.B.		8'-0"	1	138
139	BEDROOM #8	CPT	C3	WD	W1	GWB	EP	GWB	EP	GWB	EP	GWB	EP	G.W.B.		VARIES		139
140	BEDROOM #9	CPT	C3	WD	W1	GWB	EP	GWB	EP	GWB	EP	GWB	EP	G.W.B.		VARIES		140
141	BATHROOM #5	SV	V1	COVE	V1	GWB/CT1	SGP	GWB/CT1	SGP	GWB/CT1	SGP	GWB/CT1	SGP	G.W.B.		8'-0"	1	141
142	BEDROOM #10	CPT	C3	WD	W1	GWB	EP	GWB	EP	GWB	EP	GWB	EP	G.W.B.		VARIES		142
143	W/C	SV	V1	COVE	V1	GWB	SGP	GWB	SGP	GWB	SGP	GWB	SGP	G.W.B.		8'-0"	1	143
144	MED. STORAGE	SV	V1	COVE	V1	GWB	SGP	GWB	SGP	GWB	SGP	GWB	SGP	EXP.		VARIES	4	144
145	TREATMENT SUPPORT	CPT	C1/C4	WD	W1	GWB	EP	GWB	EP	GWB	EP	GWB	EP	EXP.		VARIES		145
146	HEALING SPACE	CPT	C2/C4	WD	W1	GWB/GB	EP	GWB/GB	EP	GWB/GB	EP	GWB/GB	EP	EXP.		VARIES		146
147	HALLWAY #2	CPT	C1/C4	WD	W1	GWB	EP	GWB	EP	GWB	EP	GWB	EP	SAT.		8'-0"		147
148	KITCHEN STORAGE	SV	V1	COVE	V1	GWB	SGP	GWB	SGP	GWB	SGP	GWB	SGP	SAT		8'-0"	1	

ABBREVIATIONS	MATERIALS		FINISHES	REMARKS	COLORS	REMARKS	NOTES LEGEND
	CPT CARPET CWT CERAMIC WALL TILE CONC CONCRETE CMU CONCRETE MASONRY UNITS EM ENTRY MATTING EP EGG SHELL PAINT EXP EXPOSED STRUCTURE FRP FIBERGLASS REINF. PANELS G.W.B. GYPSUM WALL BOARD	MEL MELAMINE P PAINT PLWD PLYWOOD PL PLASTIC LAMINATE QT QUARRY TILE RBR RUBBER SAT SUSPENDED ACOUSTICAL TILE SV SHEET VINYL CT CERAMIC TILE QT QUARRY TILE WD WOOD GB GLASS BLOCK	FF FACTORY FINISH HD HARDENER HCP HIGH GLOSS PAINT MFP MATT FINISH PAINT SGP SEMI GLOSS PAINT ST STAIN WPS WATERPROOF SEAL		C1 LEES, BASARE DIV686, 421 GRASS CLOTH C2 SHAW, ALBERTI 52330 CACTUS C3 LEES, BELLO D7006, 421 GRASS CLOTH C4 LEES, TRUTH IN COLOR, 527 MATISSE C5 TO BE DETERMINED V1 MANNINGTON COMMERCIAL, FINE FIELDS COLOR: 10134 GREEN TEA V2 MANNINGTON COMMERCIAL, INSPIRED FIELDS COLOR: 13009 WOODROSE TONES T1 SUMMITVILLE: FIELD-510, ACCENTS-656, & 515 T2 SUMMITVILLE: FIELD-510, ACCENTS-677, & 598 T3 THOMPSON: ALABASTRO MATTE, 12X12, BLUE		1. USE WATER RESISTANT GWB ON WALLS @ ALL WET AREA WALLS. 2. SEE PARTITION TYPES FOR LOCATIONS OF FIRE RESISTIVE WALL LOCATIONS. 3. SEE A6.1 FOR CASEWORK DETAILS. 4. PROVIDE MELAMINE SHELVES AND HEAVY DUTY STANDARDS IN STORAGE ROOMS.



KOONCE PFEFFER BETTIS
 architecture development interiors planning
 425 G Street, Suite 800 Anchorage, Alaska 99501
 T 907.274.7443 F 907.274.7407 Incorporated

DENA A COY

Anchorage, Alaska

REVISIONS
03/31/09

100%
CONSTRUCTION
DOCUMENTS

JOB NO. 95262-01
 DATE 03/28/09
 DRAWN D. Wlad
 REVIEWED

FINISH SCHEDULE

SHEET NO.
A7.1