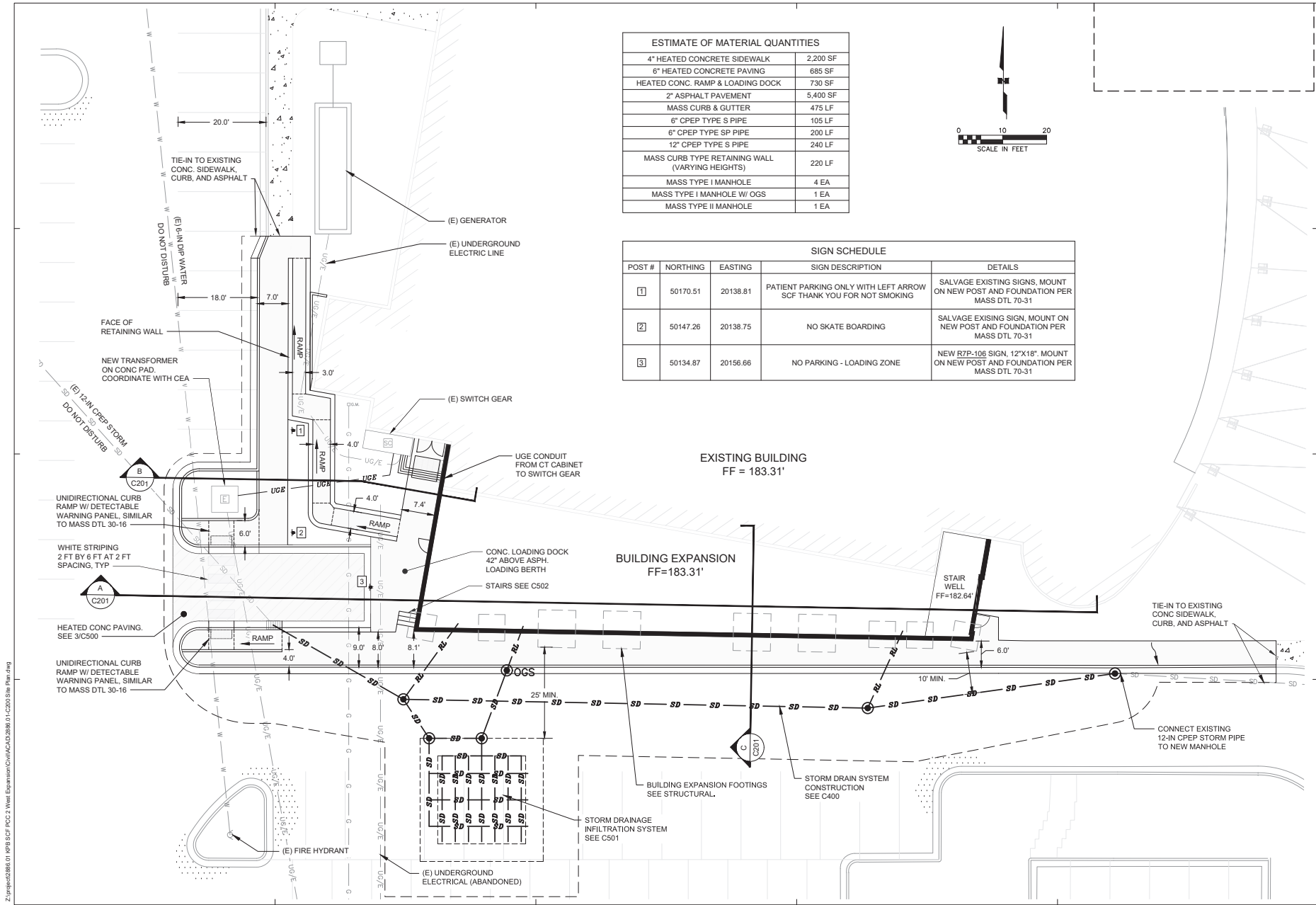
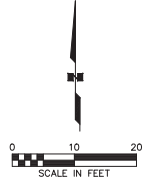


EXHIBIT G - Existing Snow Melt System Information



ESTIMATE OF MATERIAL QUANTITIES	
4" HEATED CONCRETE SIDEWALK	2,200 SF
6" HEATED CONCRETE PAVING	685 SF
HEATED CONC. RAMP & LOADING DOCK	730 SF
2" ASPHALT PAVEMENT	5,400 SF
MASS CURB & GUTTER	475 LF
6" CPEP TYPE S PIPE	105 LF
6" CPEP TYPE SP PIPE	200 LF
12" CPEP TYPE S PIPE	240 LF
MASS CURB TYPE RETAINING WALL (VARYING HEIGHTS)	220 LF
MASS TYPE I MANHOLE	4 EA
MASS TYPE I MANHOLE W/ OGS	1 EA
MASS TYPE II MANHOLE	1 EA



SIGN SCHEDULE				
POST #	NORTHING	EASTING	SIGN DESCRIPTION	DETAILS
1	50170.51	20138.81	PATIENT PARKING ONLY WITH LEFT ARROW SCF THANK YOU FOR NOT SMOKING	SALVAGE EXISTING SIGNS, MOUNT ON NEW POST AND FOUNDATION PER MASS DTL 70-31
2	50147.26	20138.75	NO SKATE BOARDING	SALVAGE EXISTING SIGN, MOUNT ON NEW POST AND FOUNDATION PER MASS DTL 70-31
3	50134.87	20156.66	NO PARKING - LOADING ZONE	NEW R7P-106 SIGN, 12"x18", MOUNT ON NEW POST AND FOUNDATION PER MASS DTL 70-31



KP&B ARCHITECTS
 ANCHORAGE, AK 99501
 1001 E. 11TH AVE.
 SUITE 200
 ANCHORAGE, AK 99501
 PHONE: 907.522.3403
 FAX: 907.522.3403
 WWW.KP&BARCHITECTS.COM

R&M CONSULTANTS, INC.
 2100 Vangard Drive - Anchorage, Alaska - 99507
 phone: 907.522.1707 - fax: 907.522.3403
 rmail.com - email: rmail@mail.com

**SOUTH CENTRAL FOUNDATION
 PCC II WEST EXPANSION &
 RENOVATION (SCF22-1068)**
 BID DOCUMENTS - VER 3
 4320 DIPLOMACY DRIVE ANCHORAGE, AK 99508

REVISION SCHEDULE	
#	DESCRIPTION

JOB NO. 2886.01
 DATE 2/04/2022
 DRAWN CP
 REVIEWED NK

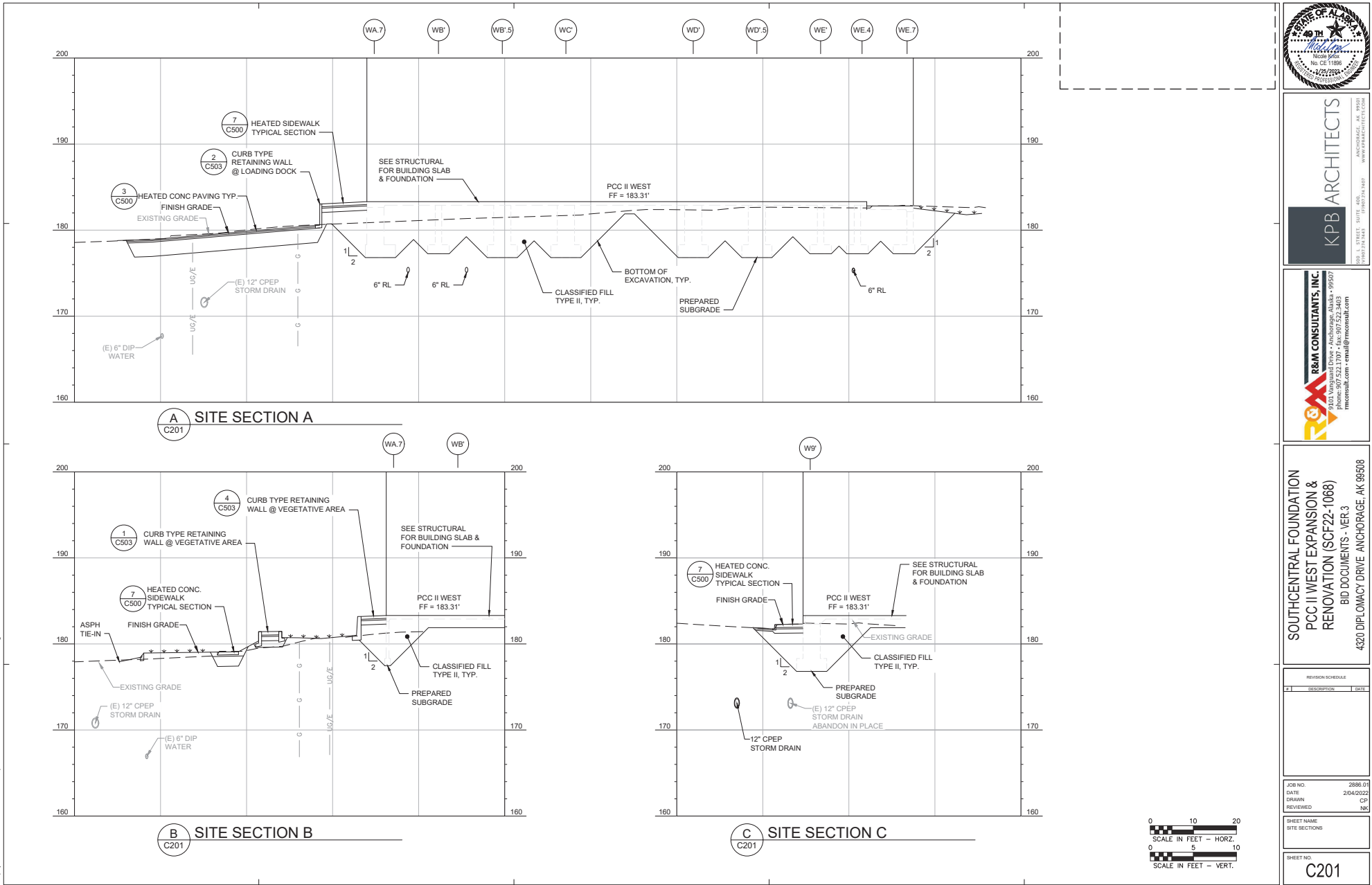
SHEET NAME
 SITE PLAN

SHEET NO.
C200

HALF SCALE AT 11X17

Z:\projects\0806.01_KPB_SCF_PCC II West Expansion\DWG\CAD\2886.01_C200_Site_Plan.dwg

EXHIBIT G - Existing Snow Melt System Information



KPB ARCHITECTS
ANCHORAGE, AK 99507
WWW.KPBARCHITECTS.COM

R&M CONSULTANTS, INC.
2101 Vanguard Drive - Anchorage, Alaska - 99507
phone: 907.522.1707 - fax: 907.522.3403
rmanch@rmanch.com

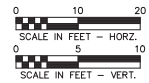
**SOUTHCENTRAL FOUNDATION
PCC II WEST EXPANSION &
RENOVATION (SCF22-1068)
BID DOCUMENTS - VER. 3
4320 DIPLOMACY DRIVE ANCHORAGE, AK 99508**

REVISION SCHEDULE	
#	DESCRIPTION

JOB NO. 2886.01
DATE 2/04/2022
DRAWN CP
REVIEWED MS

SHEET NAME
SITE SECTIONS

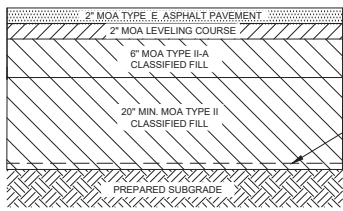
SHEET NO.
C201



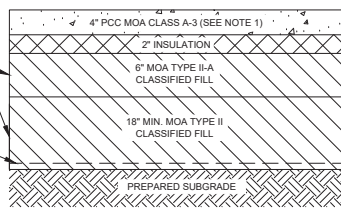
Z:\projects\2886.01_KPB_SCF_PCC II West Expansion\Drawings\CAD\C201 Site Sections.dwg

HALF-SCALE AT 1:100

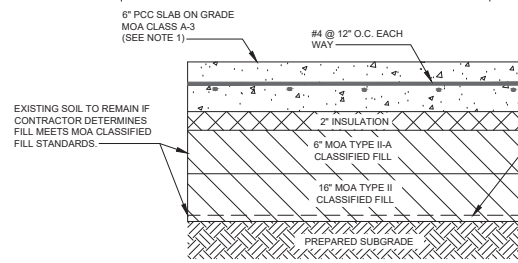
EXHIBIT G - Existing Snow Melt System Information



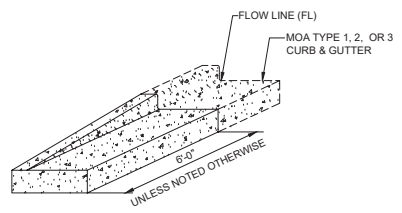
1 ASPHALT PAVEMENT AREAS
NTS



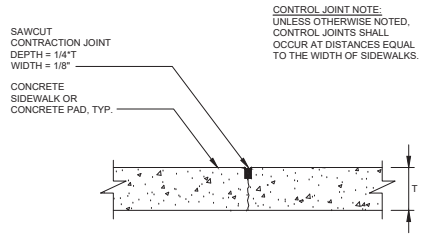
2 HEATED CONCRETE SIDEWALK
NTS



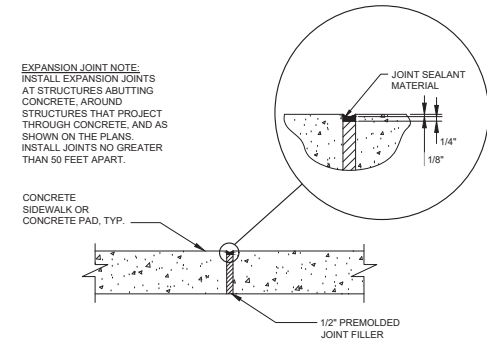
3 HEATED CONCRETE PAVING
NTS



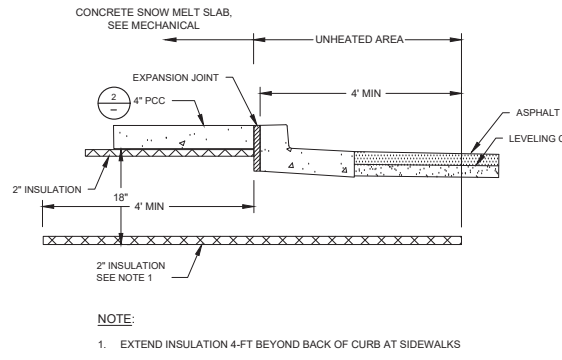
4 CURB TRANSITION TYPICAL DETAIL
NTS



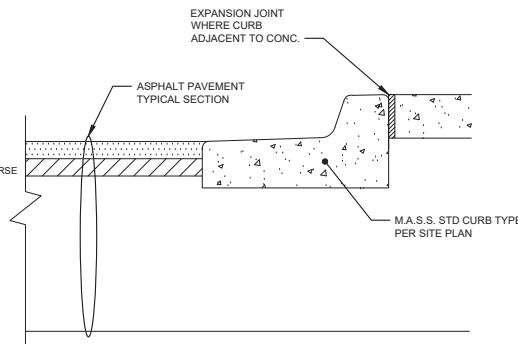
5 CONTROL JOINT DETAILS
NTS



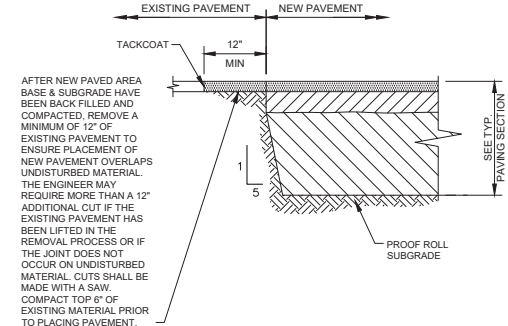
6 EXPANSION JOINT DETAILS
NTS



7 HEATED SIDEWALK TYPICAL SECTION
NTS



8 TYPICAL CURB SECTION
NTS



9 TYPICAL PAVEMENT TIE IN SECTION
NTS



KPB ARCHITECTS
ARCHITECTS, P.C.
1100 W. 4th
ANCHORAGE, AK 99507
PHONE: 907.522.1107
WWW.KPBARCHITECT.COM

R&M CONSULTANTS, INC.
3103 Vangard Drive - Anchorage, Alaska - 99507
PHONE: 907.522.1707 - FAX: 907.522.3403
rmail.com - email@rmail.com

SOUTH CENTRAL FOUNDATION
PCC II WEST EXPANSION & RENOVATION (SCF22-1068)
BID DOCUMENTS - VER. 3
4320 DIPLOMACY DRIVE ANCHORAGE, AK 99508

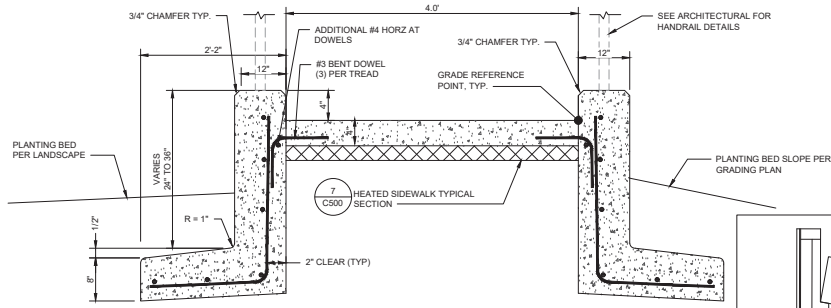
REVISION SCHEDULE	
#	DESCRIPTION

JOB NO.	2886.01
DATE	2/04/2022
DRAWN	CP
REVIEWED	NK
SHEET NAME CIVIL DETAILS	
SHEET NO. C500	

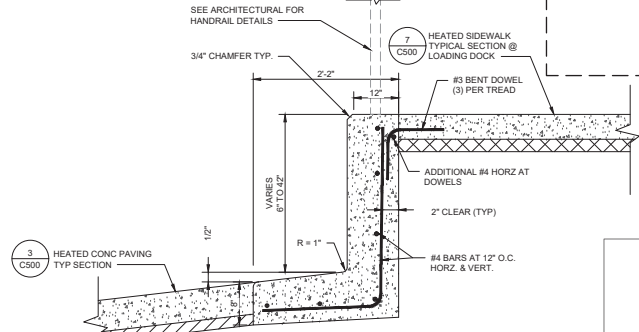
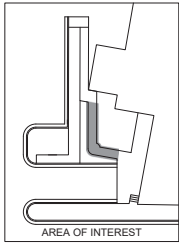
HALF-SCALE AT 11X17

Z:\proj\exd\0816.01_KPB_BCF_PCC2 West Expansion\CHM\CAD\2816.01_C500 Civil Details.dwg

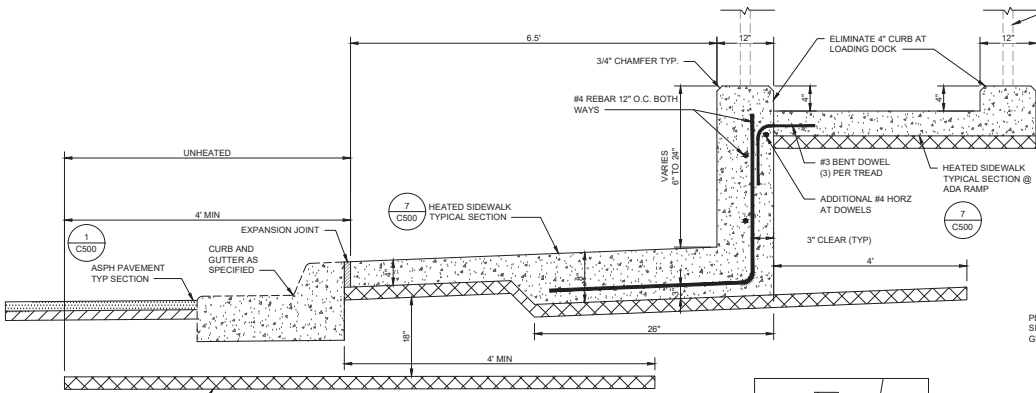
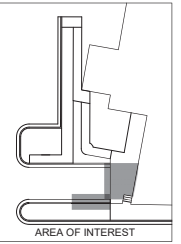
EXHIBIT G - Existing Snow Melt System Information



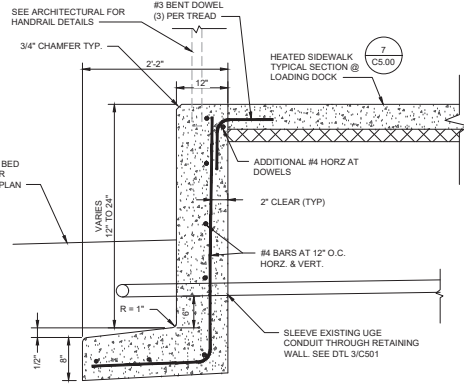
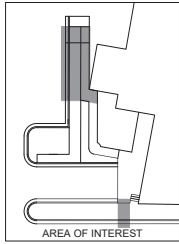
1 CURB TYPE RETAINING WALL @ VEGETATIVE AREA
NTS



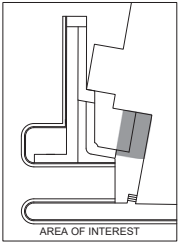
2 CURB TYPE RETAINING WALL @ LOADING DOCK
NTS



3 SIDEWALK RETAINING WALL
NTS



4 CURB TYPE RETAINING WALL @ VEGETATIVE AREA
NTS



NOTE:
1. EXTEND INSULATION 4-FT BEYOND BACK OF CURB AT HEATED SIDEWALKS

Z:\proj\0286\01\WP\BCF_PCC2 West Expansion\Civil\CAD\286.01_C502 Civil Details - Ramp and Walk.dwg



KPB ARCHITECTS
ANCHORAGE, AK 99507
WWW.KPBARCHITECTS.COM

R&M CONSULTANTS, INC.
2100 Vangundy Drive - Anchorage, Alaska - 99507
phone: 907.522.1707 - fax: 907.522.3403
rma@mail.com - email: rma@mail.com

**SOUTHCENTRAL FOUNDATION
PCC II WEST EXPANSION &
RENOVATION (SCF22-1068)**
BID DOCUMENTS - VER 3
4320 DIPLOMACY DRIVE ANCHORAGE, AK 99508

REVISION SCHEDULE		
#	DESCRIPTION	DATE

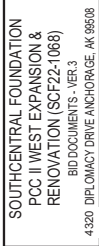
JOB NO. 2866.01
DATE 20/4/2022
DRAWN CP
REVIEWED NK

SHEET NAME CIVIL DETAILS

SHEET NO. **C503**

HALF SCALE AT 1/4" = 1'-0"

EXHIBIT G - Existing Snow Melt System Information



EXPANSION TANK SCHEDULE								
SYMBOL	MFGR	MODEL	FUNCTION	MEDIUM	MATERIAL	TANK VOLUME TOTAL (GAL) ACCEPTANCE (GAL)	DIMENSIONS DIA HEIGHT	REMARKS
ET-1	AMTROL	SX-30V	SNOWMELT SYSTEM	GLYCOL	STEEL/HEAVY DUTY BUTYL	14.0 11	16" 26"	PRECHARGE TO 12 PSIG

AIR SEPARATOR SCHEDULE						
SYMBOL	MFGR	MODEL	SIZE	MATERIAL	GPM	REMARKS
AS-1	SPROTHERM	VDT 200	2"	BRASS	24	COMBINATION AIR/DIRT SEPARATOR

GLYCOL MIX TANK SCHEDULE										
SYMBOL	MFGR	MODEL	FUNCTION	MEDIUM	MATERIAL	TANK CAPACITY (GAL) DIMENSIONS	PUMP GPM	WATTS	POWER VOLTS PH	REMARKS
GT-1	AXIOM	DMF-150	GLYCOL MAKE-UP	50% P.G.	PLASTIC	4.6 11" x 9 5/8" x 18.25"	1.0	50	120 1	CORD AND PLUG CONNECTION

AIR CONDITIONER SCHEDULE							
SYMBOL	MFGR	MODEL	COOLING BTU/H	Supply Air Flow (CFM)	REFR. TYPE	POWER SUPPLY VOLTS PH FLA	REMARKS
AC-1	VERTULIEBERT	MINI-MATE 2	12000 (3 Btu/h)	600	R-407c	208 V 1 8.2 A	SELF-CONTAINED AIR COOLED, PROVIDE WITH CONDENSATE PUMP, WALL MOUNTED CONTROLLER, INTEGRAL SUPPLY/RETURN GRILLES.

AIR INLET/OUTLET SCHEDULE							
SYMBOL	MFGR	MODEL	TYPE	USE	MATERIAL FINISH	CFM FACE SIZE (IN) INC THROW	REMARKS
A	TITUS	TMS	LAY IN	SUPPLY	STEEL PER ARCH	24 X 24 <25 4-WAY	PROVIDE WITH EARTHQUAKE TABS.
B	TITUS	ML-39	SLOT	SUPPLY	ALUMINUM PER ARCH	PER PLANS 48 X 4 <25 2-WAY	3 SLOT SURFACE MOUNT, SOUND LINED PLENUM, PROVIDE WITH SEISMIC RESTRAINT PER SMACNA.
C	TITUS	FL-20	SLOT	SUPPLY	ALUMINUM PER ARCH	PER PLANS 80 X 5.25 <25 1-WAY	1 SLOT CONTINUOUS FLOW BAR, PROVIDE WITH PASSIVE RETURN SECTION WITH LIGHT SHIELD WHERE INDICATED ON PLANS, PROVIDE SEISMIC RESTRAINT PER SMACNA.
D	TITUS	ML-39	SLOT	SUPPLY	ALUMINUM PER ARCH	PER PLANS 48 X 4 <25 2-WAY	2 SLOT SOUND LINED PLENUM, PROVIDE WITH SEISMIC RESTRAINT PER SMACNA.
E	TITUS	ML-39	SLOT	SUPPLY	ALUMINUM PER ARCH	PER PLANS 24 X 4 <25 2-WAY	SOUND LINED PLENUM, PROVIDE WITH SEISMIC RESTRAINT PER SMACNA.
F	TITUS	TMS	CEILING	SUPPLY	STEEL PER ARCH	PER PLANS 24 X 24 <25 4-WAY	PROVIDE WITH EARTHQUAKE TABS.
G	TITUS	50F	LAY IN	EXHAUST	ALUMINUM PER ARCH	PER PLANS 24 X 24 <25 -	PROVIDE WITH EARTHQUAKE TABS.
H	TITUS	50F	CEILING	EXHAUST	ALUMINUM PER ARCH	PER PLANS 24 X 24 <25 -	PROVIDE WITH EARTHQUAKE TABS.
I	TITUS	MLR-39	SLOT	RETURN	ALUMINUM PER ARCH	PER PLANS <25 -	NUMBER OF SLOTS PER PLANS, PROVIDE WITH LIGHT SHIELD.
J	TITUS	PAR	LAY IN	RETURN	STEEL PER ARCH	PER PLANS 24 X 4 <25 -	PROVIDE WITH EARTHQUAKE TABS.


FAN SCHEDULE									
SYMBOL	MFGR	MODEL	TYPE	SERVICE	CFM	TSP IN W.C. RPM	MOTOR DATA HP VOLTS Hz PH DRIVE	SONES	REMARKS
EF-3	GREENHECK	G-180-VG	CENTRIFUGAL DOWNBLAST	GENERAL EXHAUST	1,625	0.50	702 3/4 115 60 1	DIRECT 6.1	PROVIDE WITH 24 V MOTORIZED BACKDRAFT DAMPER, FACTORY MOUNTED FUSED DISCONNECT, AND SPEED CONTROLLER.
EF-6	GREENHECK	G-180-VG	CENTRIFUGAL DOWNBLAST	GENERAL EXHAUST	1,625	0.50	702 3/4 115 60 1	DIRECT 6.1	PROVIDE WITH 24 V MOTORIZED BACKDRAFT DAMPER, FACTORY MOUNTED FUSED DISCONNECT, AND SPEED CONTROLLER.
EF-11	GREENHECK	G-90-VG	CENTRIFUGAL DOWNBLAST	GENERAL EXHAUST	350	0.30	1248 1/10 115 60 1	DIRECT 5.2	PROVIDE WITH 24 V MOTORIZED BACKDRAFT DAMPER, FACTORY MOUNTED FUSED DISCONNECT, AND SPEED CONTROLLER.
TF-1	GREENHECK	ISQ-9-E	INLINE	ELECTRICAL ROOM COOLING	250	0.20	650 1/50 115 60 0	DIRECT 4.1	PROVIDE WITH FACTORY MOUNTED FUSED DISCONNECT AND SPEED CONTROLLER.

TRANSFER BOOT SCHEDULE						
SYMBOL	DUCT SIZE (IN)	FREE OPENING (IN)	CFM	VELOCITY (FPM)	REMARKS	
TB-1	12/18	10/8	150-400	600	PROVIDE WITH 1" SOUNDLINING	
TB-2	14/18	12/14	400-600	750	PROVIDE WITH 1" SOUNDLINING	
TB-3	18/18	16/16	800-1200	750	PROVIDE WITH 1" SOUNDLINING	
TB-4	20/20	18/18	1,200-1,600	750	PROVIDE WITH 1" SOUNDLINING	

SOUND ATTENUATOR SCHEDULE									
SYMBOL	MANUFACTURER	MODEL	SERVICE	VELOCITY (FPM)	PRESSURE DROP (IN WC)	ATTENUATION DYNAMIC INSERTION LOSS (dB) OCTAVE BAND (Hz)	GENERATED NOISE (dB) OCTAVE BAND	DIMENSIONS W X H X L (IN)	REMARKS
SA-1	PRICE	RHT207C	RTU-1 SA	1250	0.28	53 125 250 500 1000 2000 4000 8000	2 3 4 5 6 7 8	14 X 14 X 1 (IN)	
SA-2	PRICE	RHT1208F	RTU-1 SA	1263	0.17	14 18 29 37 41 36 20 16 59 46 43 41 45 46 47 43	56 X 20 X 120	RECTANGULAR DUCT-MOUNTED FIBER GLASS SILENCER WITH 22 GA GALVANIZED CASING	
SA-3	PRICE	RHT1207C	RTU-1 SA	1250	0.16	15 16 25 36 34 32 20 14 51 38 30 39 40 38 32 28	52 X 20 X 120	RECTANGULAR DUCT-MOUNTED FIBER GLASS SILENCER WITH 22 GA GALVANIZED CASING	
SA-4	PRICE	ERM1140Z	RTU-4 SA	882	0.14	14 18 25 32 41 33 45 34 149 49 42 44 44 37 39 39	102 X 24 ELBOW 80 X 86	RECTANGULAR DUCT-MOUNTED FIBER GLASS SILENCER WITH 22 GA GALVANIZED CASING	
SA-5	PRICE	RHT1202C	RTU-4 SA	1651	0.26	14 16 23 33 30 28 18 13 58 47 46 45 44 43 41 37	64 X 14 X 120	RECTANGULAR DUCT-MOUNTED FIBER GLASS SILENCER WITH 22 GA GALVANIZED CASING	
SA-6	PRICE	ERM1207A	RTU-4 SA	2027	0.31	12 16 19 34 37 45 35 21 58 53 47 47 46 42 45 38	50 X 14 ELBOW 86 X 86	RECTANGULAR DUCT-MOUNTED FIBER GLASS SILENCER WITH 22 GA GALVANIZED CASING	

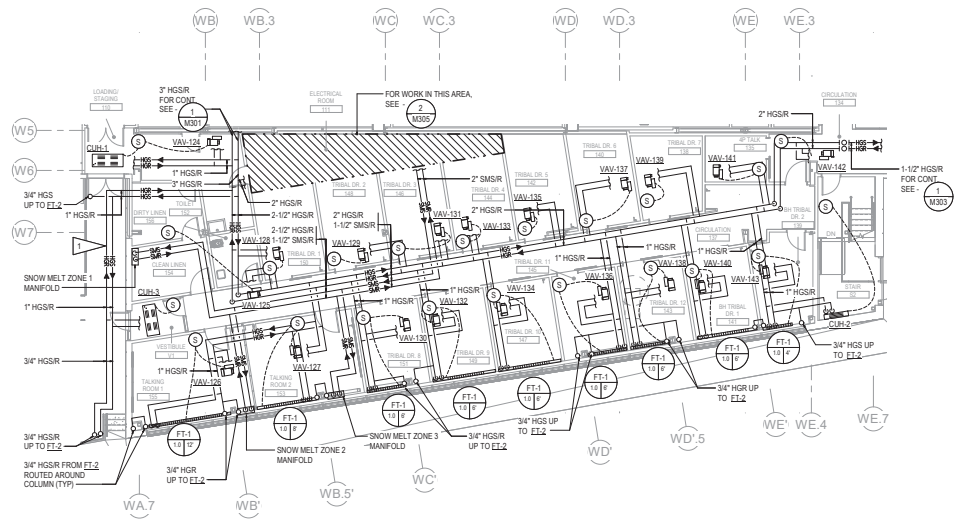
EXHIBIT G - Existing Snow Melt System Information

GENERAL NOTES

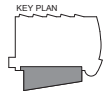
- A. ALL BRANCH PIPING 3/4" UNLESS NOTED OTHERWISE
- B. PROVIDE CONCEALED TAMPER-PROOF TEMPERATURE SENSORS IN HALLWAYS, VESTIBULES, AND TOILET ROOMS.
- C. FOR TYPICAL CABINET UNIT HEATER DETAIL, SEE - 

SHEET NOTES

-  ROUTE HEATING PIPING IN BUILDING OVERHANG. LEAVE PIPING UNINSULATED TO PROVIDE HEAT TO BUILDING OVERHANG.



1 LEVEL 1 HEATING REMODEL PLAN - PHASE 2
1/8" = 1'-0"



KPB ARCHITECTS
KYLE B. LUTHE, OWNER, LEAD ARCHITECT
1000 W. 11TH AVENUE, SUITE 200
ANCHORAGE, ALASKA 99501
PH: 907.562.7349
WWW.KPBARCHITECTS.COM

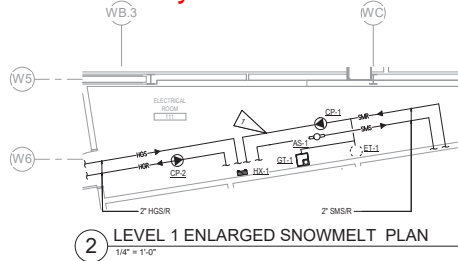
RISA Engineering, Inc.
MECHANICAL, ELECTRICAL, AND PLUMBING ENGINEERS
1000 W. 11TH AVENUE, SUITE 200
ANCHORAGE, ALASKA 99501
PH: 907.562.7349
WWW.RISAENGINEERING.COM

SOUTHCENTRAL FOUNDATION
PCC II WEST EXPANSION & RENOVATION (SCF22-1068)
BID DOCUMENTS - PERC
4520 DPO DUMCKY DRIVE ANCHORAGE, AK 99508

REVISIONS	DATE

JOB NO. M302
DATE 04/2022
DRAWN JAW
CHECKED RSL
SHEET NAME
LEVEL 1 HEATING
REMODEL PLAN - PHASE 2
SHEET NO.
M302
SHEET SCALE AT 1/8" = 1'-0"

EXHIBIT G - Existing Snow Melt System Information

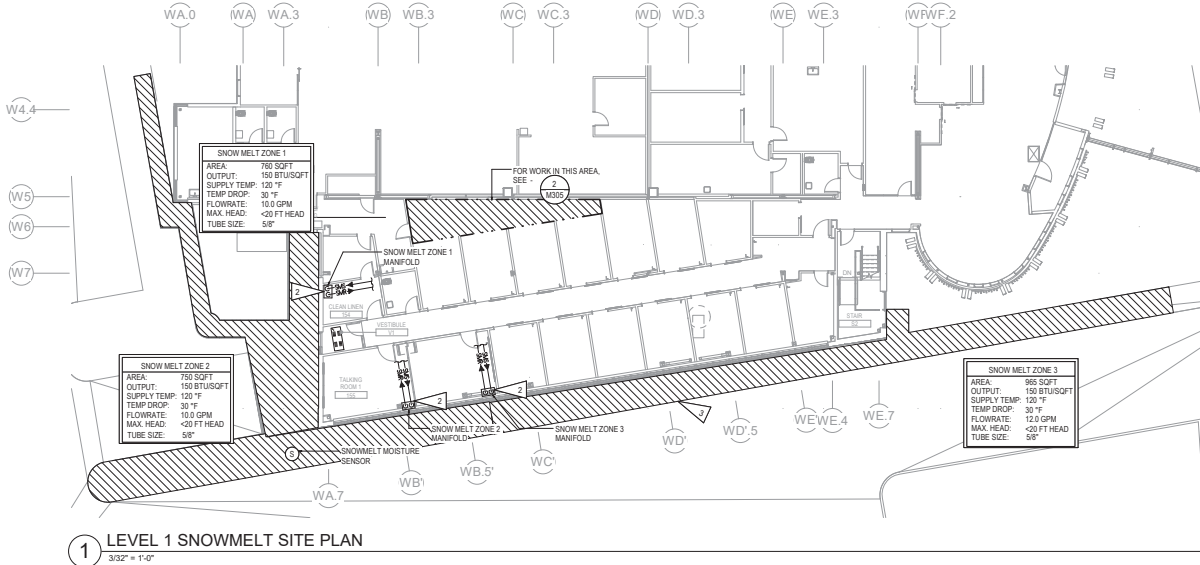


GENERAL NOTES

- A. FOR CONTINUATION OF SNOWMELT PIPING SEE - 1 M307
- B. FOR SNOWMELT PIPING SCHEMATIC SEE - 1 M701

SHEET NOTES

- 1 ROUTE HGSR AND SMSR PIPING ALONG WALL. RACK PUMPS ALONG WALL. SHOWN OFFSET FOR CLARITY.
- 2 FOR TYPICAL SNOWMELT MANFOLD DETAIL, SEE - 1 M807
- 3 FOR SNOWMELT SLAB DETAIL, SEE - 3 M807



R/S/I
ARCHITECTS

R/S/I
Engineering, Inc.
MECHANICAL AND ELECTRICAL CONSULTING ENGINEERS

SOUTHCENTRAL FOUNDATION
PCC II WEST EXPANSION & RENOVATION (SCF 22-1068)
BID DOCUMENTS - WEK3
4320 DIPLOMACY DRIVE ANCHORAGE, AK 99506

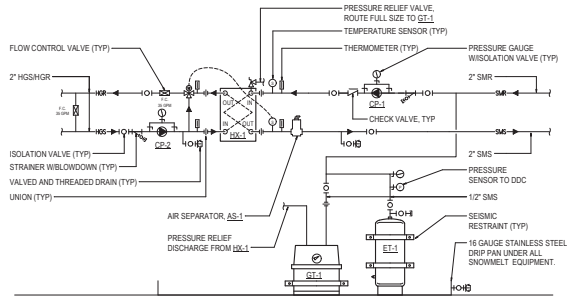
REVISION	DATE	BY	CHK

JOB NO: M305
DATE: 04/02/22
DESIGN: JAW
REVISION: (R)

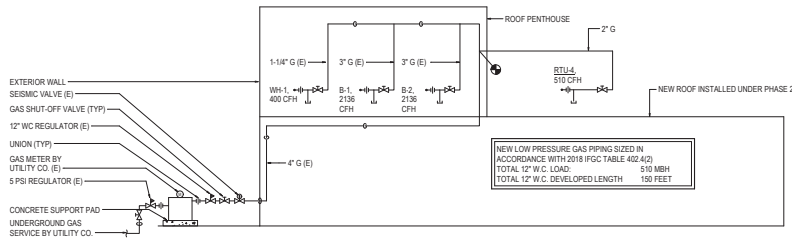
SHEET NAME:
SNOWMELT SYSTEM PLAN
SHEET NO:
M305

HALF SCALE AT 1/16"

EXHIBIT G - Existing Snow Melt System Information



1 SNOWMELT PIPING SCHEMATIC
NOT TO SCALE



2 GAS PIPING SCHEMATIC
NOT TO SCALE

C:\Users\kwilliam\Documents\AK2648\BIDD\2017\AK2648\M701.dwg



KPB ARCHITECTS
 ARCHITECTS
 1000 EAST BROADWAY
 ANCHORAGE, ALASKA 99501
 LICENSE NO. 13449
 PROFESSIONAL SEAL NO. 13449

RISA Engineering, Inc.
 MECHANICAL AND ELECTRICAL CONSULTING ENGINEERS
 1000 EAST BROADWAY, SUITE 200
 ANCHORAGE, ALASKA 99501
 COMPANY NO. 1822342

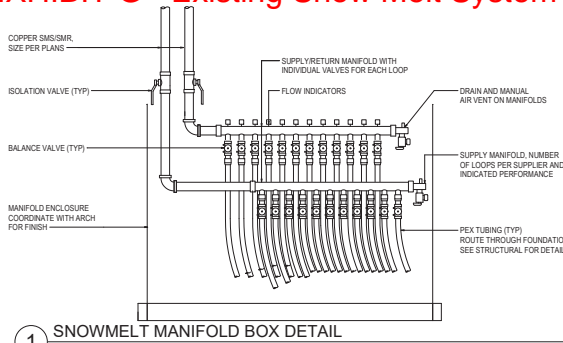
SOUTHCENTRAL FOUNDATION
PCC II WEST EXPANSION & RENOVATION (SCF22-1068)
 BIDD DOCUMENTS - VER 3
 4320 DIPLOMAT DRIVE ANCHORAGE, AK 99508

DATE: 2/28/2018
 DRAWN: JAW
 CHECKED: PSL

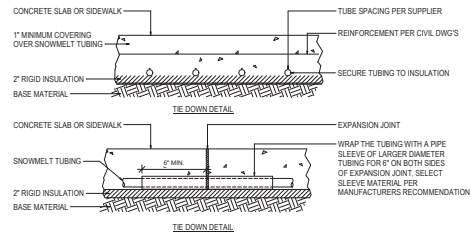
PROJECT NAME:
 MECHANICAL SCHEMATICS

SHEET NO:
M701
 HALF SCALE AT 1/8"=1'

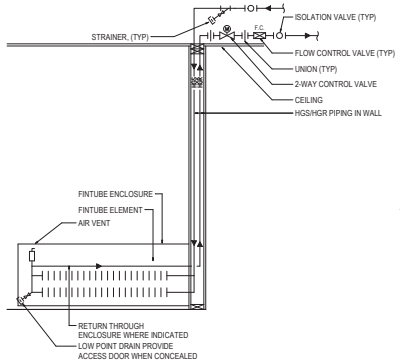
EXHIBIT G - Existing Snow Melt System Information



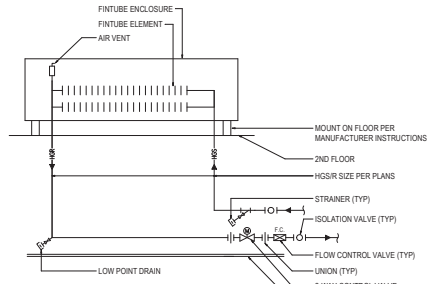
1 SNOWMELT MANIFOLD BOX DETAIL
NOT TO SCALE



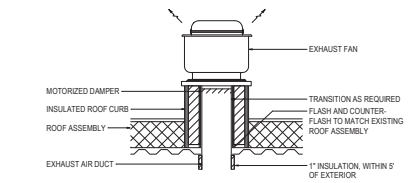
2 SNOWMELT SLAB DETAILS
NOT TO SCALE



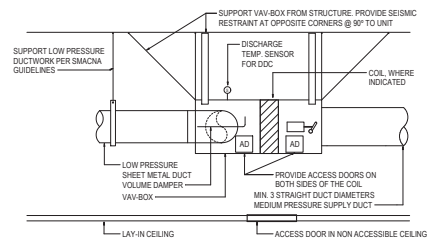
4 FINTUBE DETAIL
NOT TO SCALE



5 PEDESTAL FINTUBE DETAIL
NOT TO SCALE

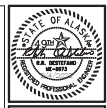


3 ROOF MOUNTED EXHAUST FAN DETAIL
NOT TO SCALE



6 VAV BOX DETAIL
NOT TO SCALE

C:\Users\m\OneDrive\Work\2025\250525\250525_21.mechanical.dwg



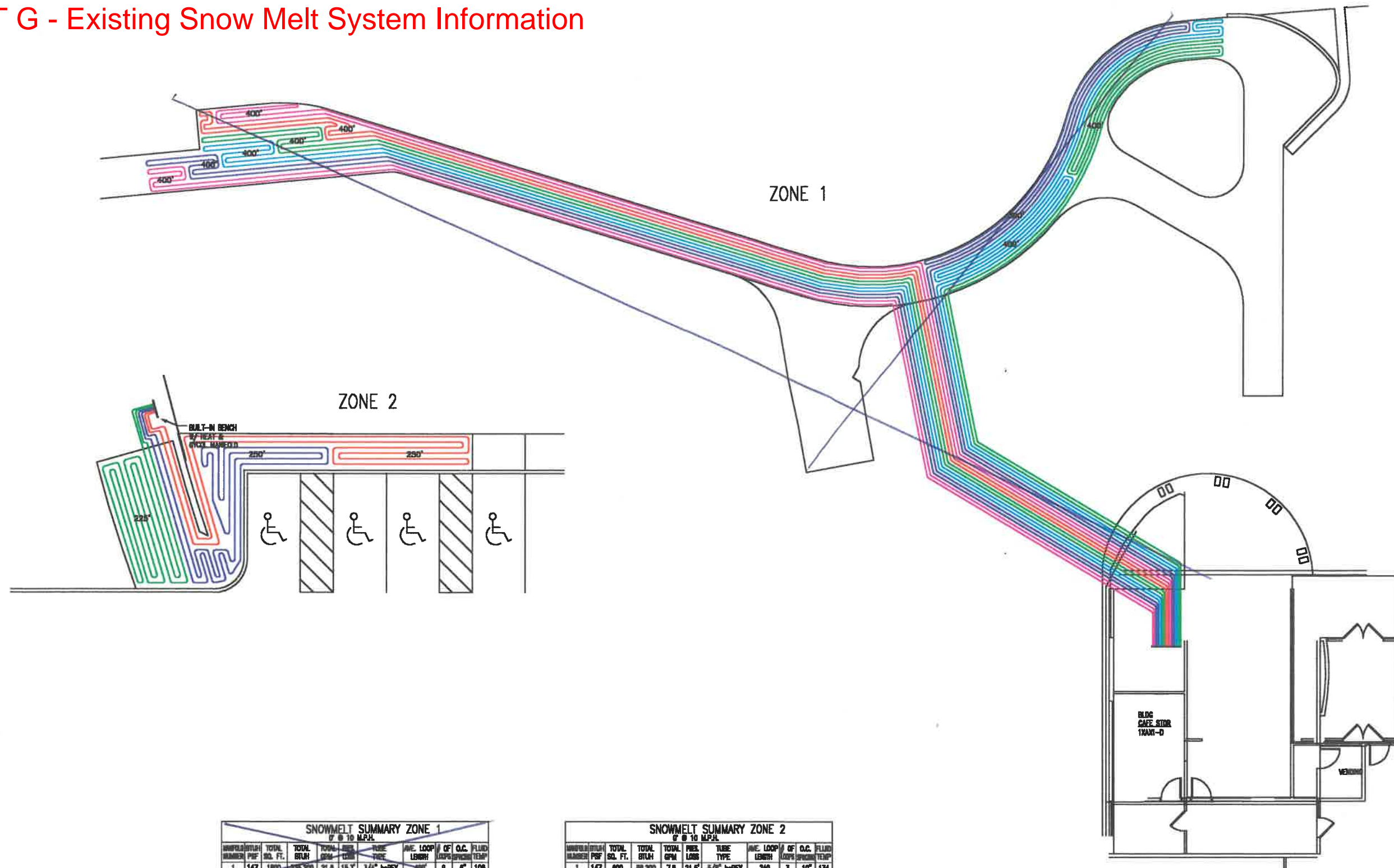
KPB ARCHITECTS
ARCHITECTS
1000 W. 11TH AVENUE, SUITE 100
ANCHORAGE, ALASKA 99501
PH: 283-2200
WWW.KPBARCHITECTS.COM

RISA
Engineering, Inc.
MECHANICAL AND ELECTRICAL CONSULTING ENGINEERS
1000 W. 11TH AVENUE, SUITE 100
ANCHORAGE, ALASKA 99501
PH: 283-2200
WWW.RISAENGINEERING.COM

SOUTHCENTRAL FOUNDATION
PCC II WEST EXPANSION & RENOVATION (SCF22-1068)
BID DOCUMENTS - VEB3
4320 DPL/DIMANCY DRIVE/ANCHORAGE, AK 99508

SHEET NAME: MECHANICAL DETAILS
SHEET NO: M802
HALF SCALE AT 1/4\"/>

EXHIBIT G - Existing Snow Melt System Information



SNOWMELT SUMMARY ZONE 1
7' @ 10 M.P.H.

WATERFLO NUMBER	BTUH	TOTAL SQ. FT.	TOTAL BTUH	TOTAL GPM	AVG. LOOP LENGTH	TUBE TYPE	AVE. LOOP LENGTH	OF	O.C. FLUID
1	147	1800	235,200	21.8	15.3'	3/4" mPEX	400'	3	10° 108
TOTALS	147	1800	235,200	21.8	15.3'	3/4" mPEX	400'	3	10° 108

SNOWMELT SUMMARY ZONE 2
7' @ 10 M.P.H.

WATERFLO NUMBER	BTUH	TOTAL SQ. FT.	TOTAL BTUH	TOTAL GPM	AVG. LOOP LENGTH	TUBE TYPE	AVE. LOOP LENGTH	OF	O.C. FLUID
1	147	800	88,200	7.8	21.5'	5/8" mPEX	240'	3	10° 134
TOTALS	147	800	88,200	7.8	21.5'	5/8" mPEX	240'	3	10° 134

Snow Melt Shop Drawings - North sidewalk adjacent to Ambassador Drive



World Leader in Hydraulic Radiant Heating with over 1.5 million installations

WIRSO COMPANY
5925 148th Street West
Apple Valley, MN 55124
Ph. 1-800-321-4739
Fax 1-612-891-1246

Wirso Representative:
Proctor Sales, Inc.
P.O. Box 5887
Lynnwood, WA 98048
Phone: (425) 774-1441
Fax: (425) 771-2580

- Notes:
- 1) Piping is to be installed at 10' O.C. unless otherwise noted in design.
 - 2) Where highly maneuverable problems exist.
 - 3) Piping should be installed with an option.
 - 4) Loop lengths are listed on the respective loops.
 - 5) This drawing is not valid to old installations.
 - 6) This design must be verified by the project engineer prior to installing the piping.

Tube Type:
5/8" mPEX plus
Construction Method:
Slab



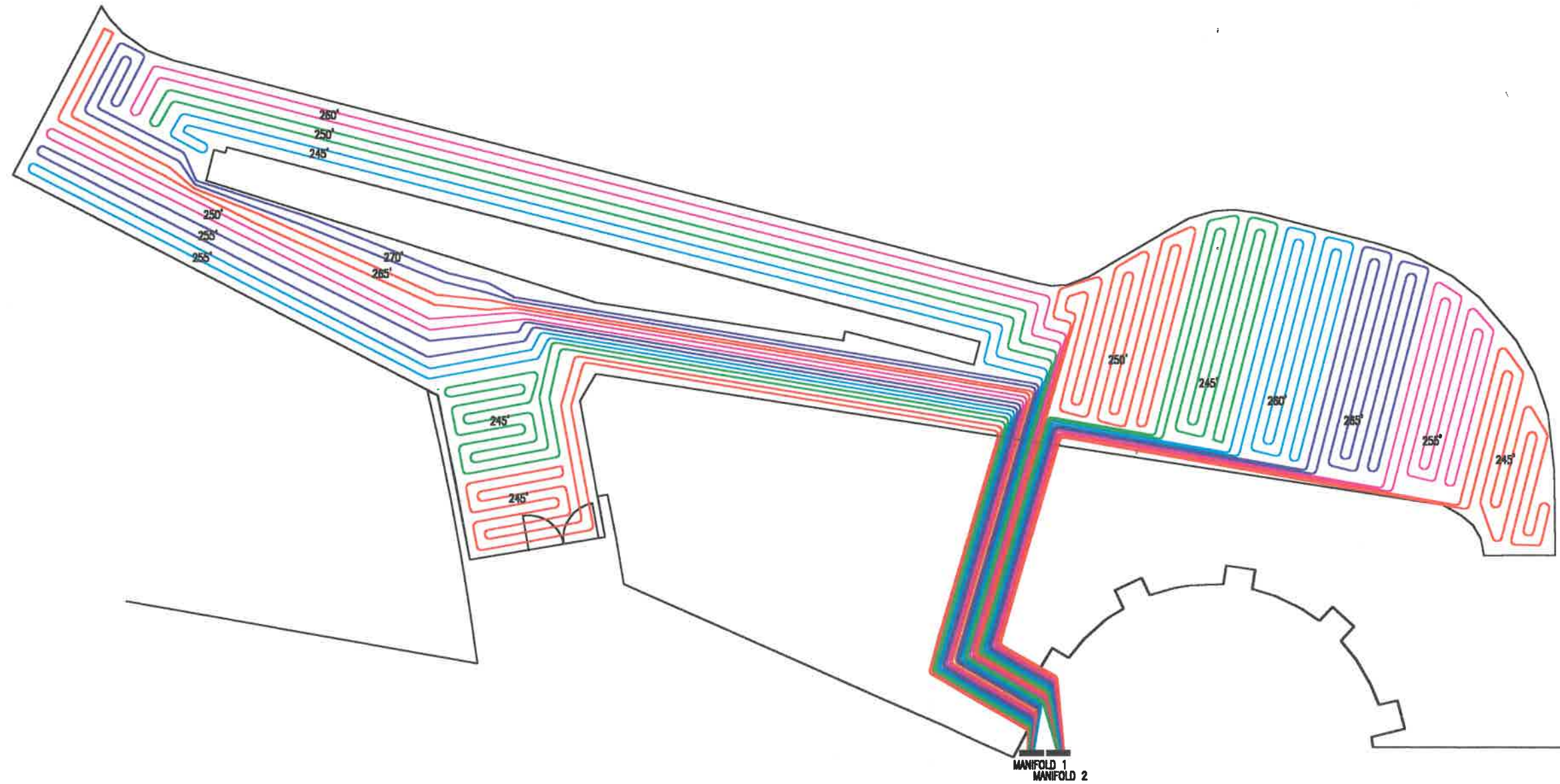
Project:
AP & S

Snowmelt Layout

No.	Date	Revision

Project Number: 010108-12
Date: 03/08/2001
Scale: 1/8" = 1'-0"
Sheet No. 1 of 1
Drawn by: YM
Checked by: EEH

EXHIBIT G - Existing Snow Melt System Information



Snow Melt Shop Drawings - North sidewalk adjacent to Diplomacy Drive



World Leader in Hydronic Radiant Heating with over 1.5 Million Installations

WIRSO COMPANY
 5925 148th Street West
 Apple Valley, MN 55124
 Ph: 1-800-321-4739
 Fax 1-612-891-1246

Wirso Representative:
 Proctor Sales, Inc.
 5401 Cordova St., Ste. 303
 Anchorage, AK 99518
 Phone: (907) 582-2808
 Fax: (907) 582-0503

Notes:
 1) Tubing is to be installed at 10" O.C. unless otherwise noted in design.
 2) Wirso highly recommends program control.
 3) Tubing should be installed with an air gap.
 4) Loop lengths are listed on the respective loops.
 5) This drawing is color coded to aid installation.
 6) This design must be verified by the project engineer prior to installing the tubing.

Tube Type: 5/8" PEX
 Construction Method: SLAB

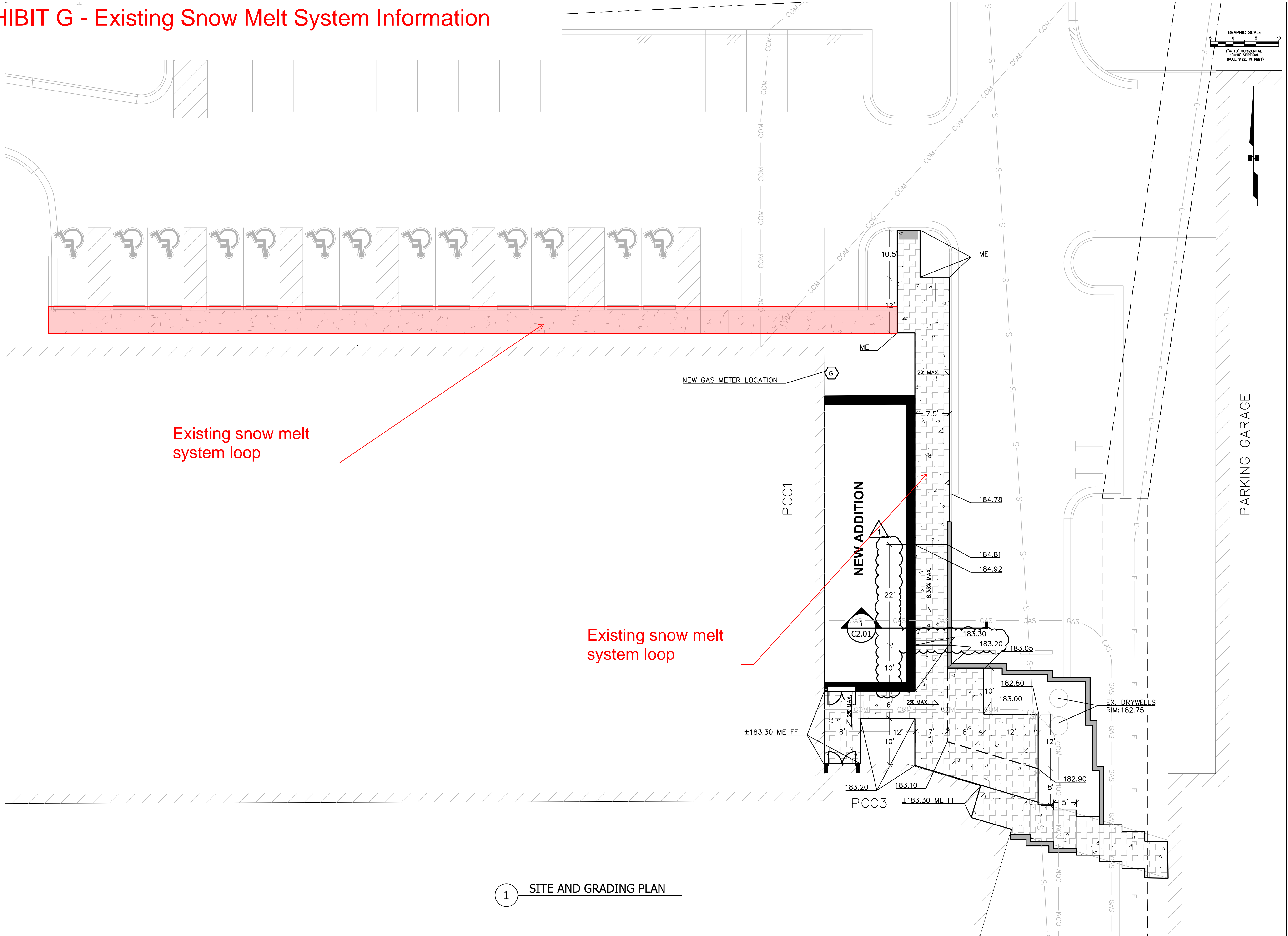


Project: PCC II
 Location: ALASKA
 Snowmelt Layout

No.	Date	Revisions
2	7-25-01	DESIGN CHANGES
3	7-30-01	DESIGN CHANGES

Project Number: 010108-12
 Date: 7-25-01
 Scale: 3/16" = 1'-0"
 Sheet No. 1 OF 1
 Drawn by: EB
 Checked by: EB

EXHIBIT G - Existing Snow Melt System Information



CERTIFICATE OF AUTHORIZATION NO:
EBSC ENGINEERING, LLC #AECL1635

spark design, llc
11301 OLIVE LN. ANCHORAGE AK 99515
Phone: 222-1065 Fax: 222-9210
www.ebscengineering.com

EBSC engineering

**SOUTHCENTRAL FOUNDATION
PRIMARY CARE CLINIC - 1 NORTH
ANCHORAGE, ALASKA**

REVISION SCHEDULE	
NO.	DESCRIPTION
1	RFI 29

JOB NO.	17-064
DATE	06/27/19
DRAWN	LDM
REVIEWED	LDM

SHEET NAME
SITE & GRADING PLAN

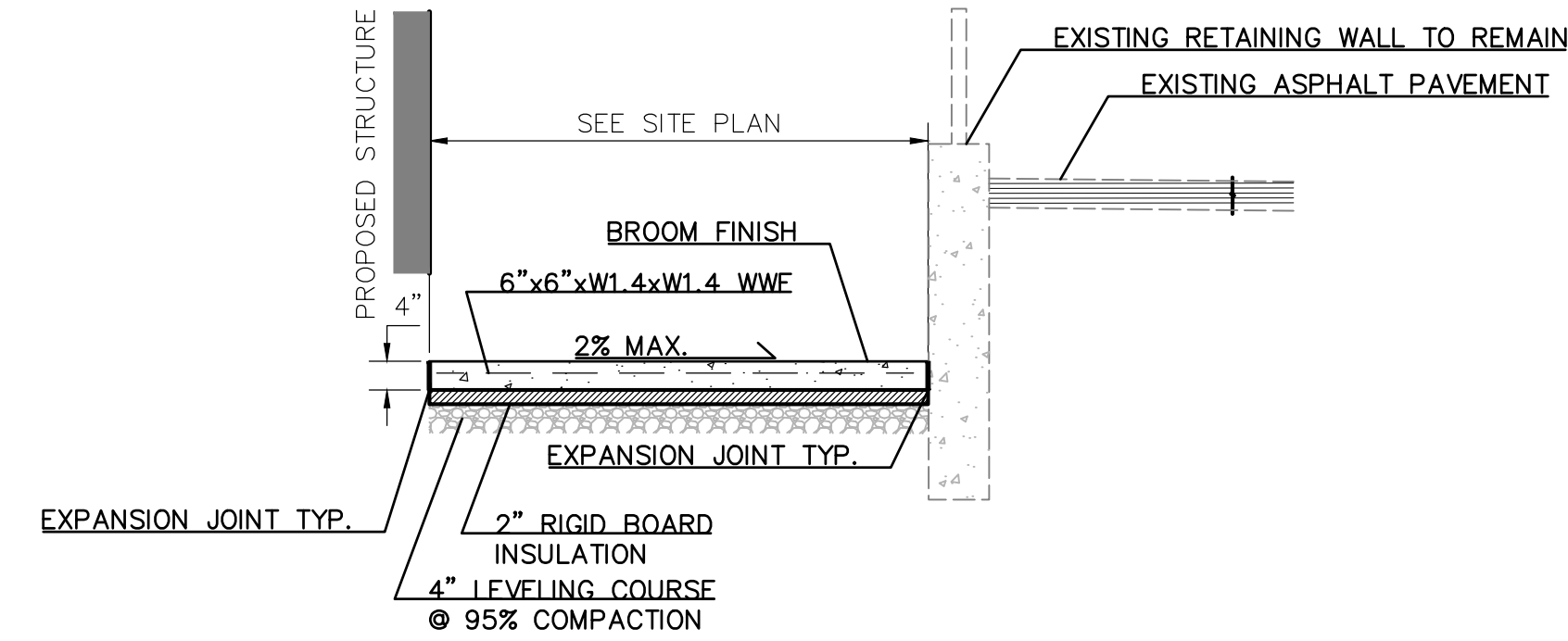
SHEET NO.
C2.01

1 SITE AND GRADING PLAN

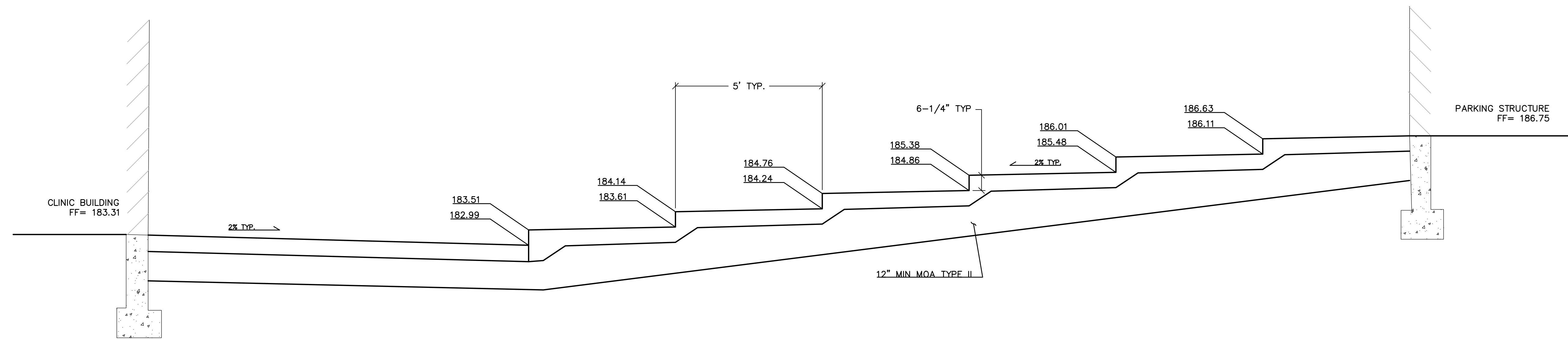
EXHIBIT G - Existing Snow Melt System Information

NOTES

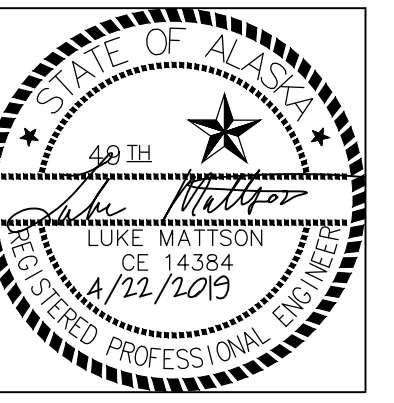
1. CONSTRUCT CONTROL JOINTS AND EXPANSION JOINTS PER MASS SPECIFICATIONS
2. THICKENED EDGE SECTION ONLY WHERE ADJACENT TO PARKING.
3. CLASSIFIED FILL BENEATH SIDEWALK SAME AS ASPHALT PAVEMENT.



1 HEATED PCC SIDEWALK DETAIL
 SCALE: NTS
 C3.01



2 HEATED STAIR SECTION & ELEVATIONS
 SCALE: NTS
 C3.01



CERTIFICATE OF AUTHORIZATION NO:
 EBSC ENGINEERING, LLC #AECL1635

spark design, llc
 11301 OLIVE LN. ANCHORAGE AK 99515
 Phone: 222-1065 Fax: 222-9210
 www.ebscengineering.com

**SOUTHCENTRAL FOUNDATION
 PRIMARY CARE CLINIC - 1 NORTH
 ANCHORAGE, ALASKA**

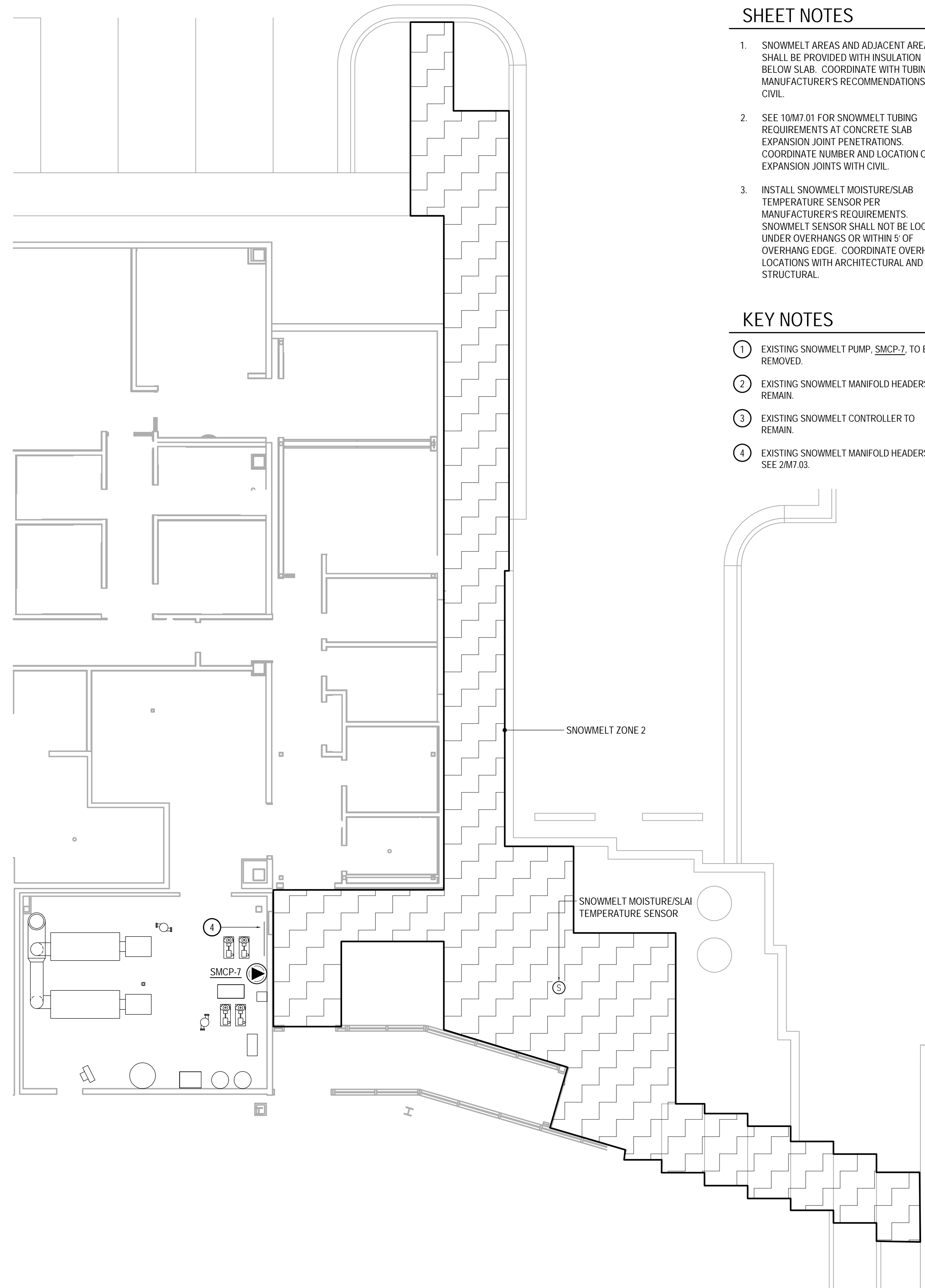
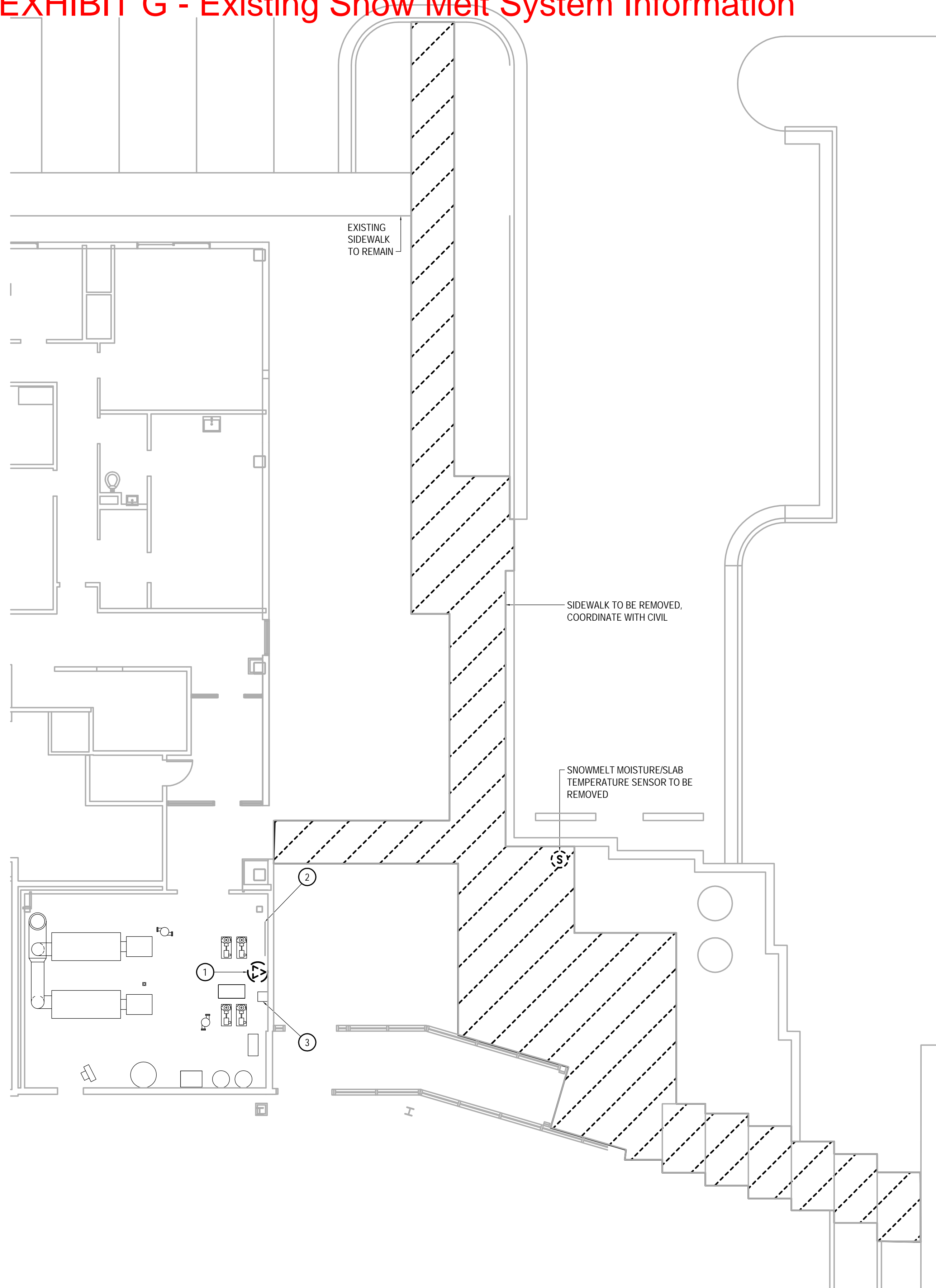
REVISION SCHEDULE	
NO.	DESCRIPTION

JOB NO. 17-064
 DATE 04/22/19
 DRAWN LDM
 REVIEWED LDM

SHEET NAME
 CIVIL DETAILS

SHEET NO.
C3.01

EXHIBIT G - Existing Snow Melt System Information



SHEET NOTES

1. SNOWMELT AREAS AND ADJACENT AREAS SHALL BE PROVIDED WITH INSULATION BELOW SLAB. COORDINATE WITH TUBING MANUFACTURER'S RECOMMENDATIONS AND CIVIL.
2. SEE 10M7.01 FOR SNOWMELT TUBING REQUIREMENTS AT CONCRETE SLAB EXPANSION JOINT PENETRATIONS. COORDINATE NUMBER AND LOCATION OF EXPANSION JOINTS WITH CIVIL.
3. INSTALL SNOWMELT MOISTURE/SLAB TEMPERATURE SENSOR PER MANUFACTURER'S REQUIREMENTS. SNOWMELT SENSOR SHALL NOT BE LOCATED UNDER OVERHANGS OR WITHIN 5' OF OVERHANG EDGE. COORDINATE OVERHANG LOCATIONS WITH ARCHITECTURAL AND STRUCTURAL.

KEY NOTES

- 1 EXISTING SNOWMELT PUMP, SMCP-7, TO BE REMOVED.
- 2 EXISTING SNOWMELT MANFOLD HEADERS TO REMAIN.
- 3 EXISTING SNOWMELT CONTROLLER TO REMAIN.
- 4 EXISTING SNOWMELT MANFOLD HEADERS. SEE 2M7.03.



CERTIFICATE OF AUTHORIZATION NO: T3 ALASKA, LLC AECL # 1625

spark design, llc
T3 ALASKA llc
 Mechanical & Electrical Engineering
 301 Calista Court, Suite 100
 Anchorage, Alaska 99503
 Ph: 907-665-7900 Fax: 907-965-7975

SOUTHCENTRAL FOUNDATION
 PRIMARY CARE CLINIC - 1 NORTH
 ANCHORAGE, ALASKA

REVISION SCHEDULE		
#	DESCRIPTION	DATE
1	BID DOCUMENTS	01/14/2019
2	CONFORMED DOCUMENTS	04/22/2019

JOB NO.	2017.117.0
DATE	12.28.2018
DRAWN	KMR
REVIEWED	ACT

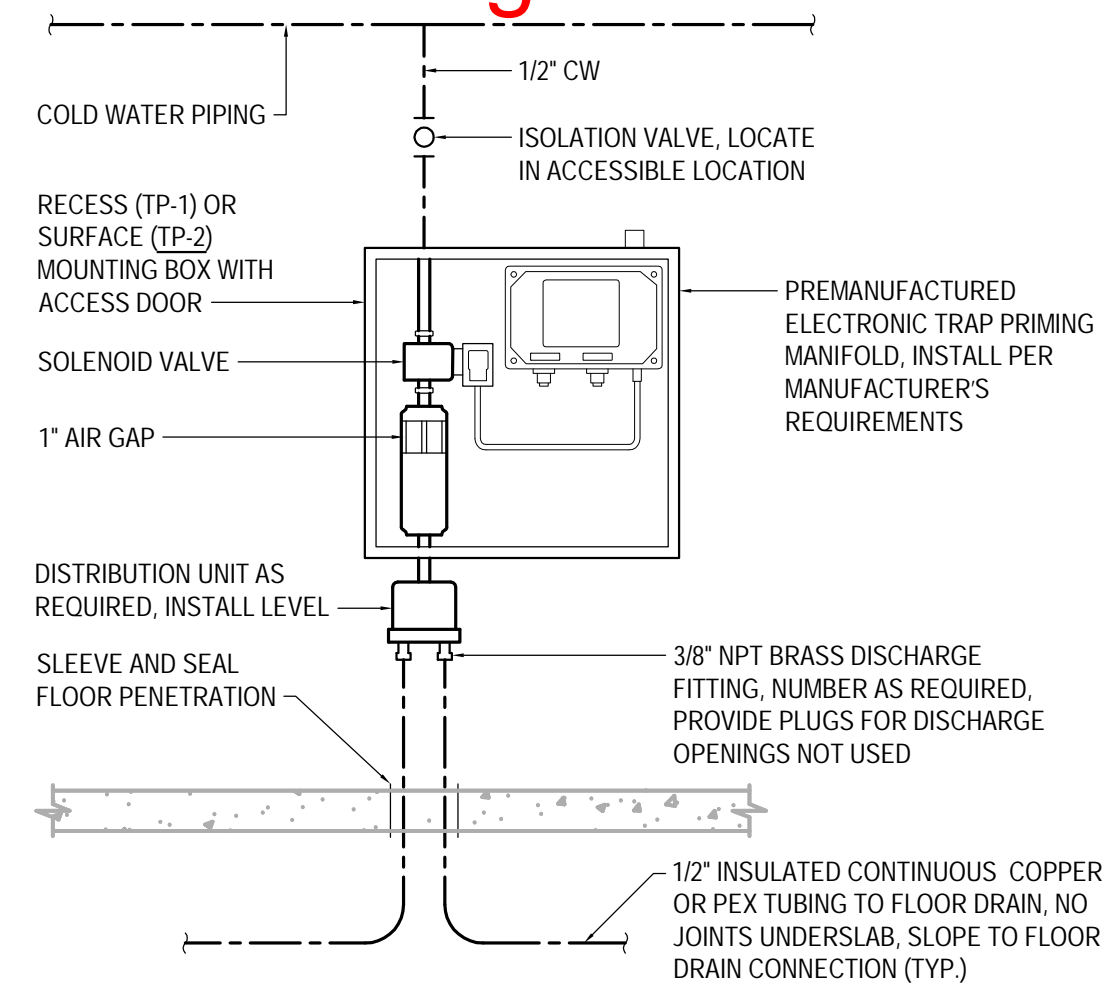
SHEET NAME
 SNOWMELT PLANS

SHEET NO.
 M3.04

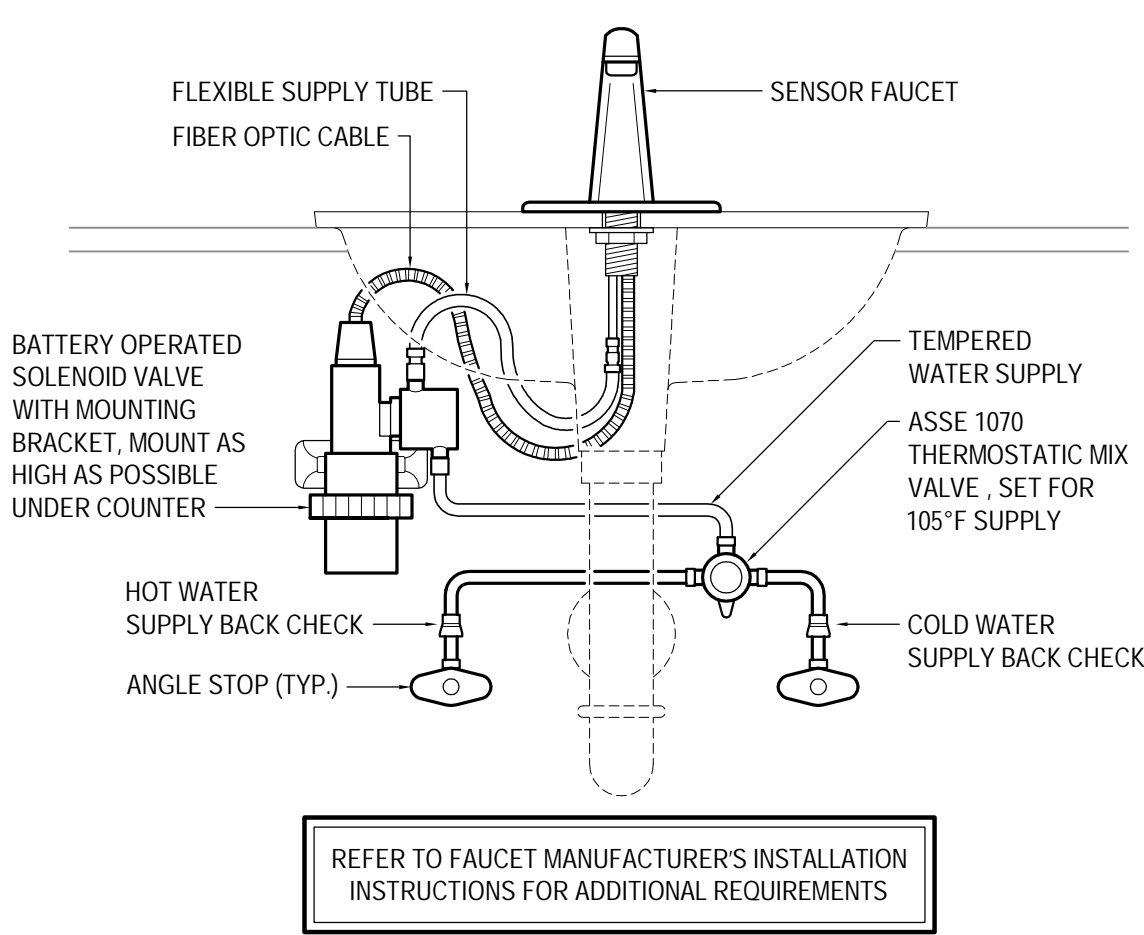
1 SNOWMELT DEMOLITION PLAN
 SCALE: 1/8" = 1'-0"

2 SNOWMELT PLAN
 SCALE: 1/8" = 1'-0"

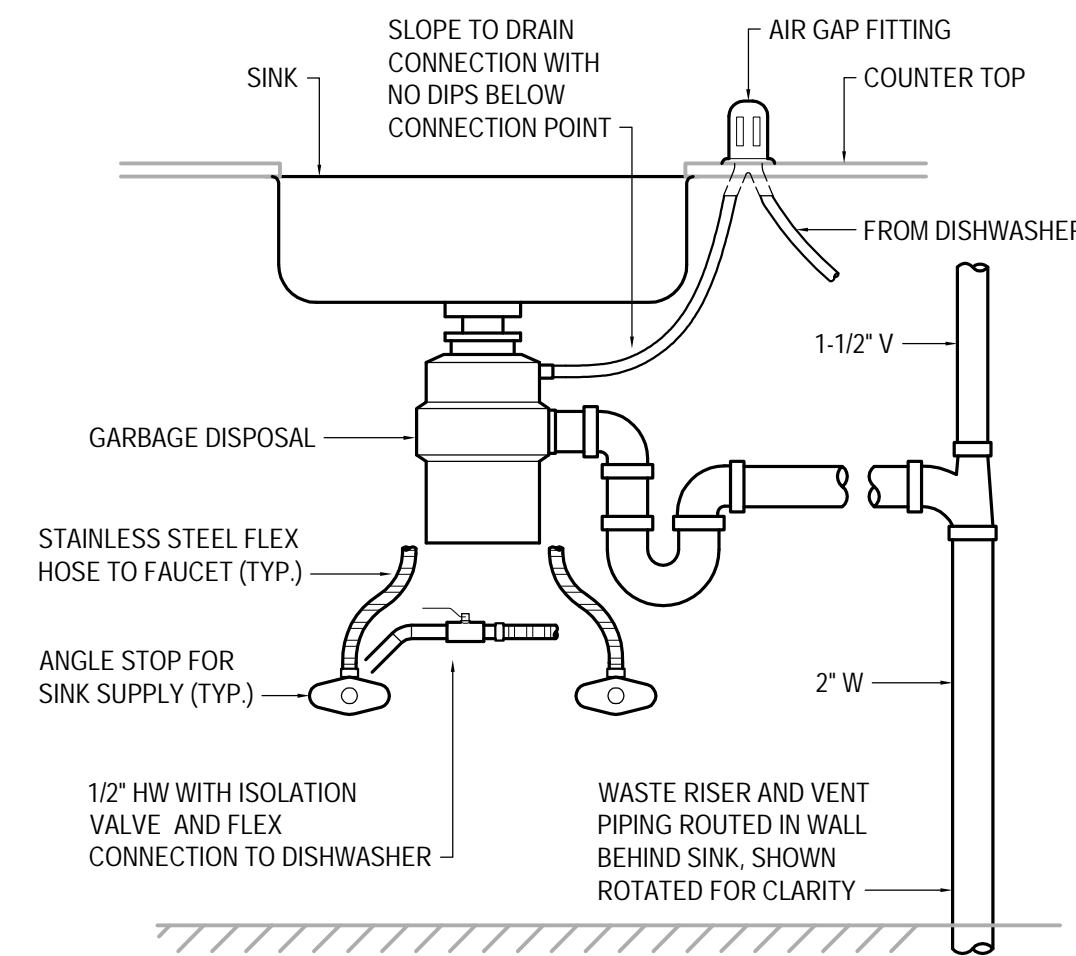
EXHIBIT G - Existing Snow Melt System Information



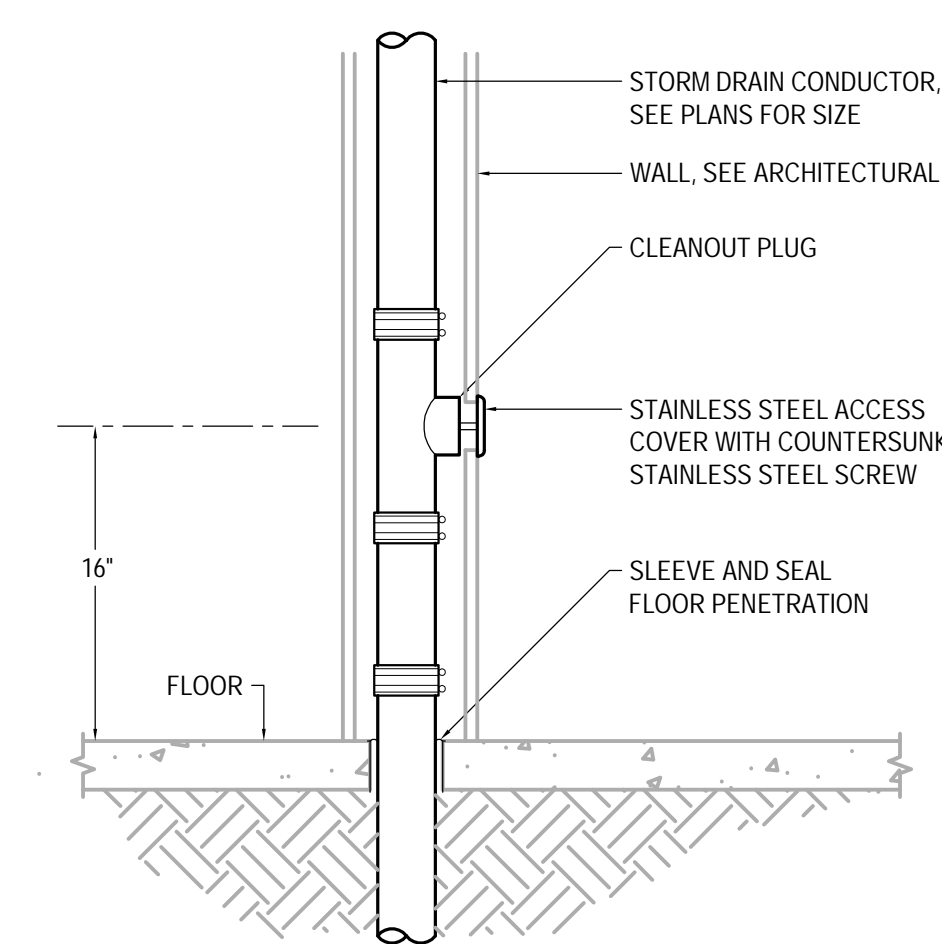
1 TRAP PRIMER DETAIL
SCALE: NONE



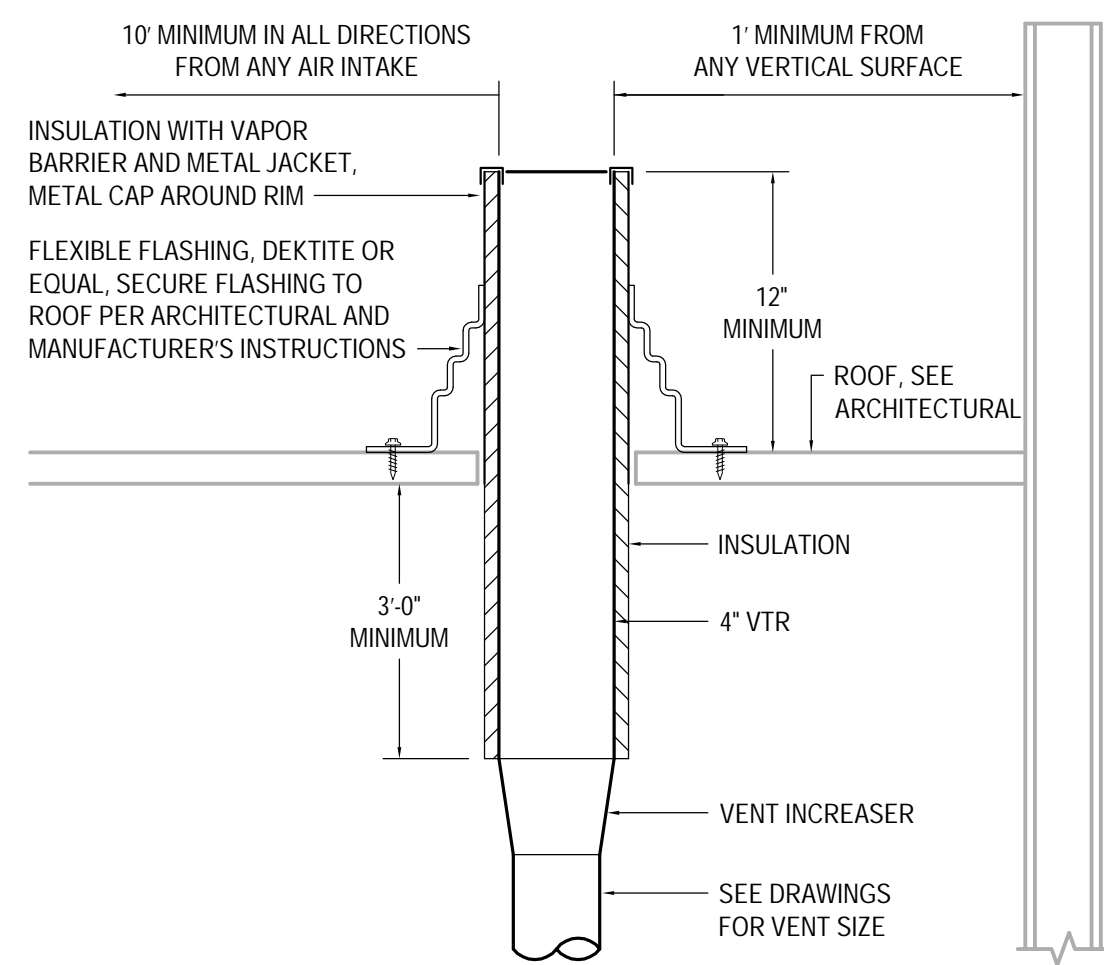
2 SENSOR FAUCET DETAIL
SCALE: NONE



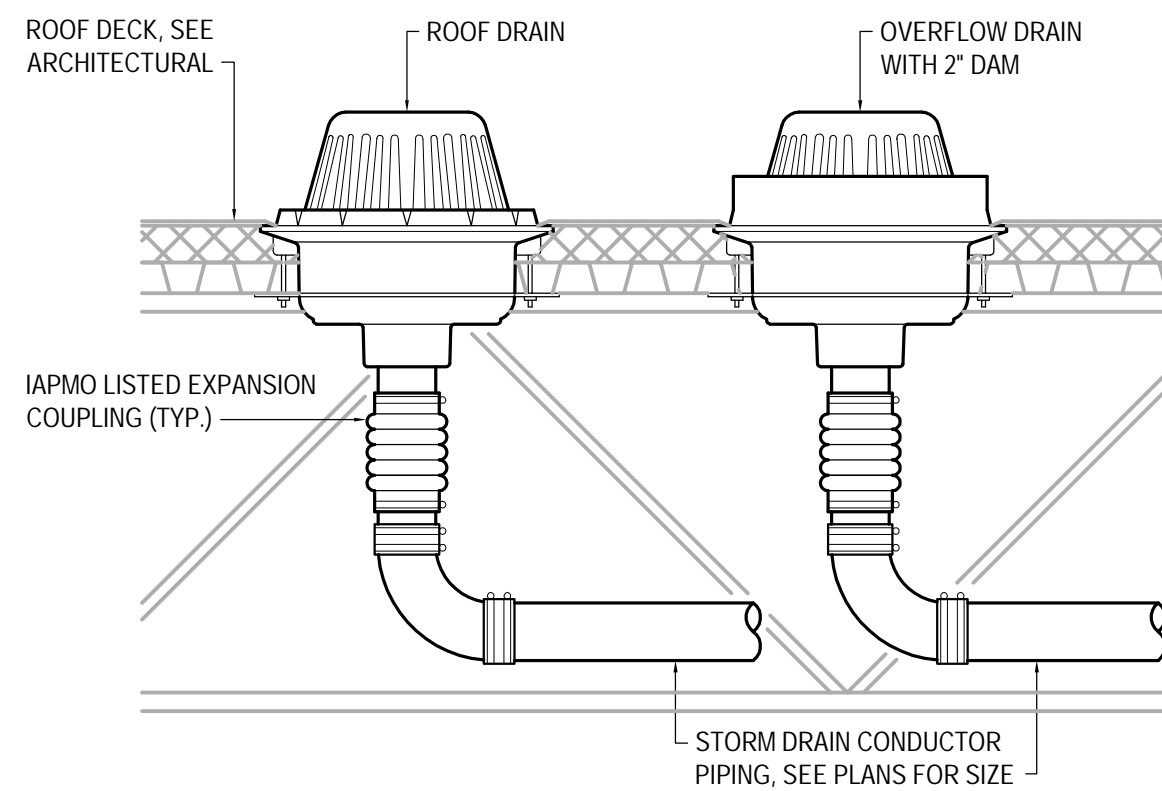
3 SINK DETAIL
SCALE: NONE



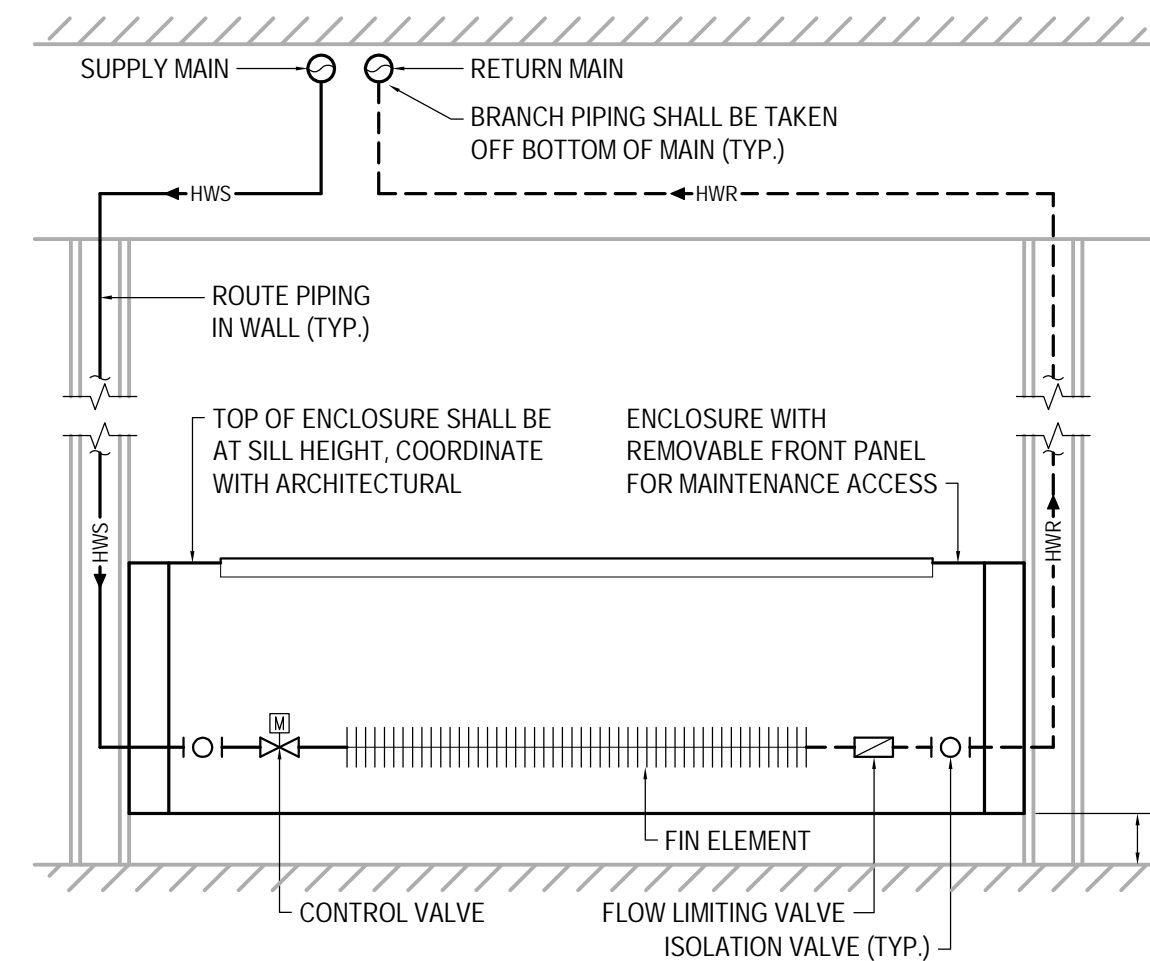
4 STORM DRAIN CLEANOUT DETAIL
SCALE: NONE



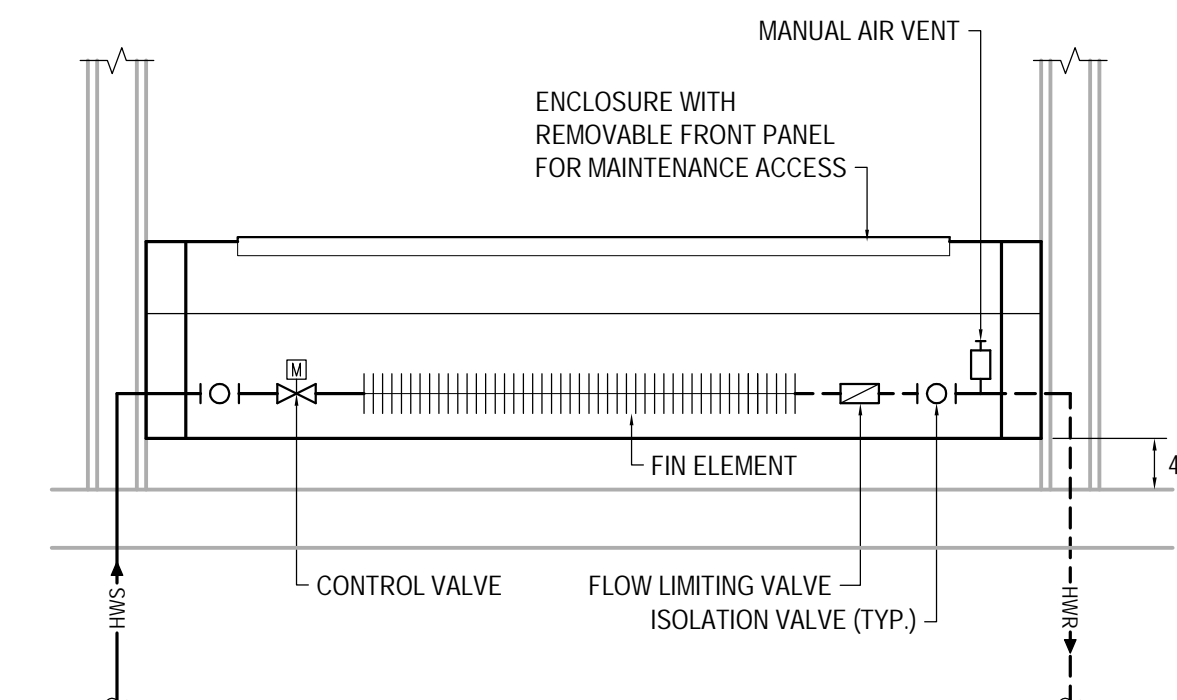
5 VENT THROUGH ROOF DETAIL
SCALE: NONE



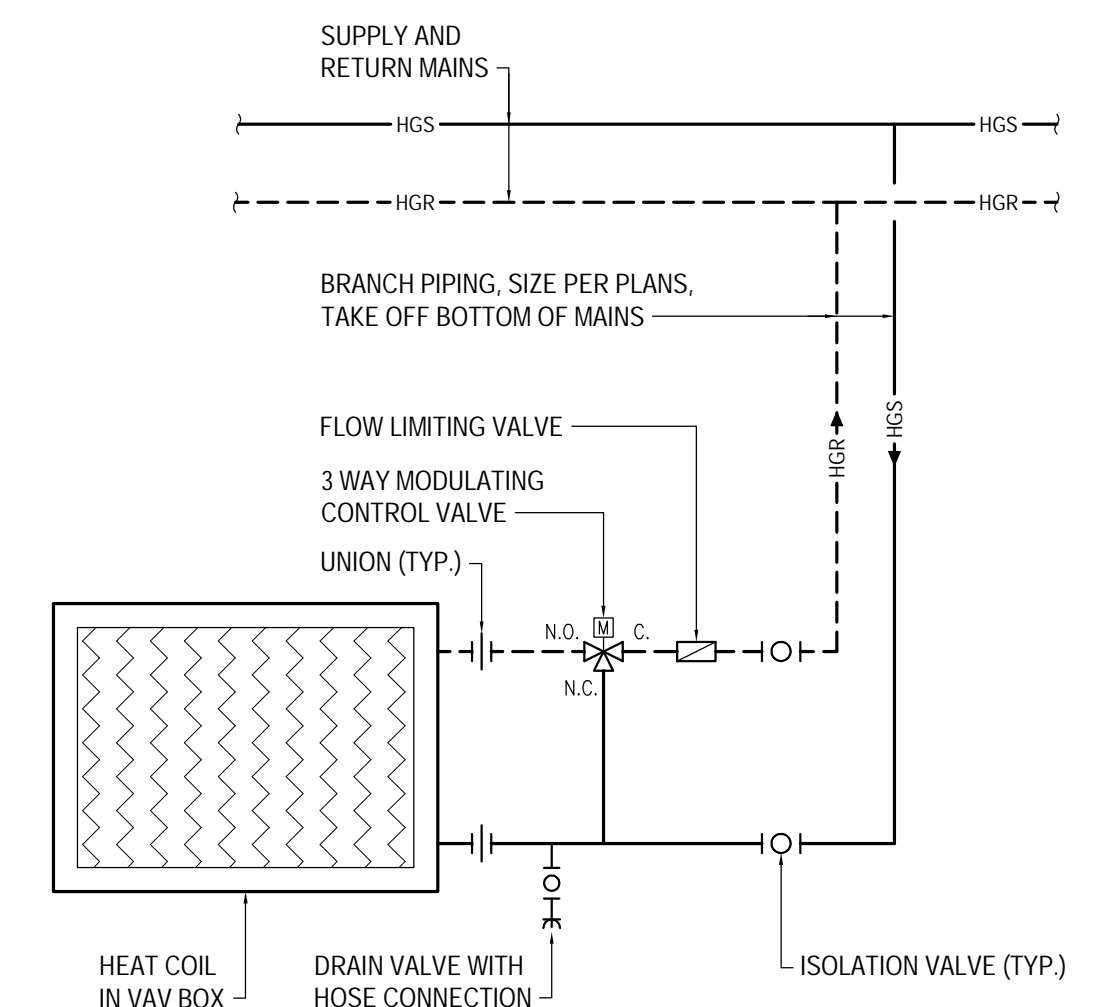
6 ROOF DRAIN DETAIL
SCALE: NONE



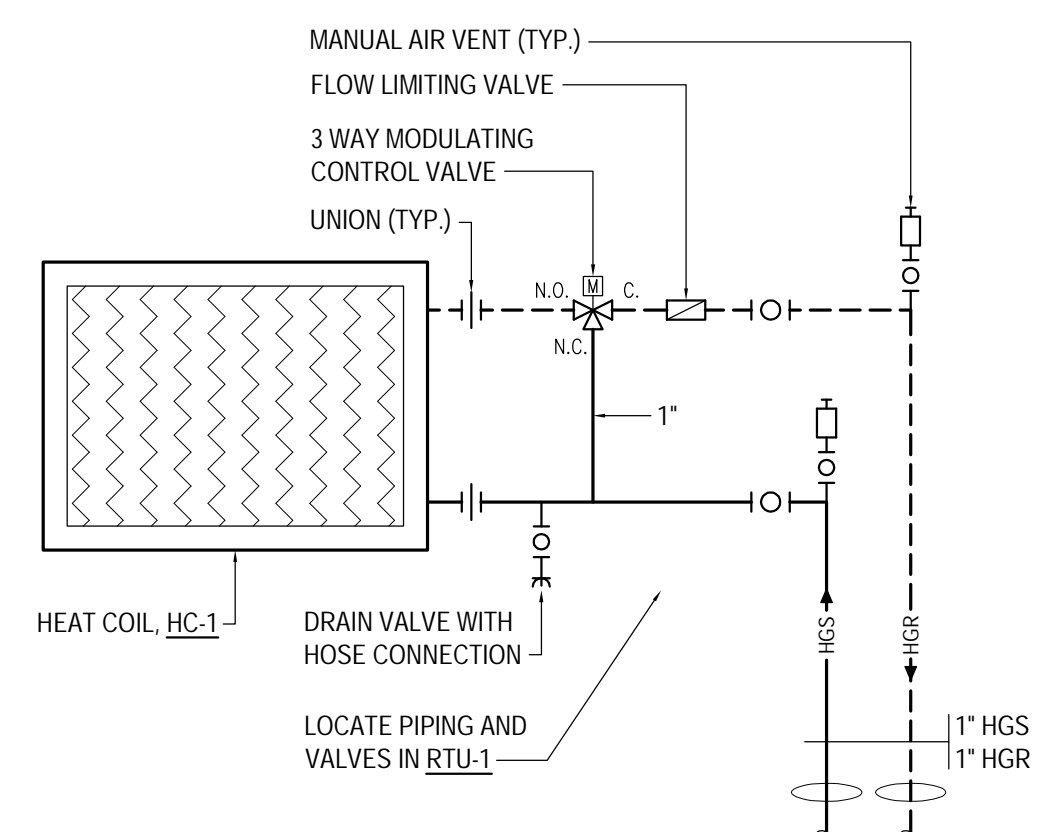
7 BASEBOARD DETAIL
SCALE: NONE



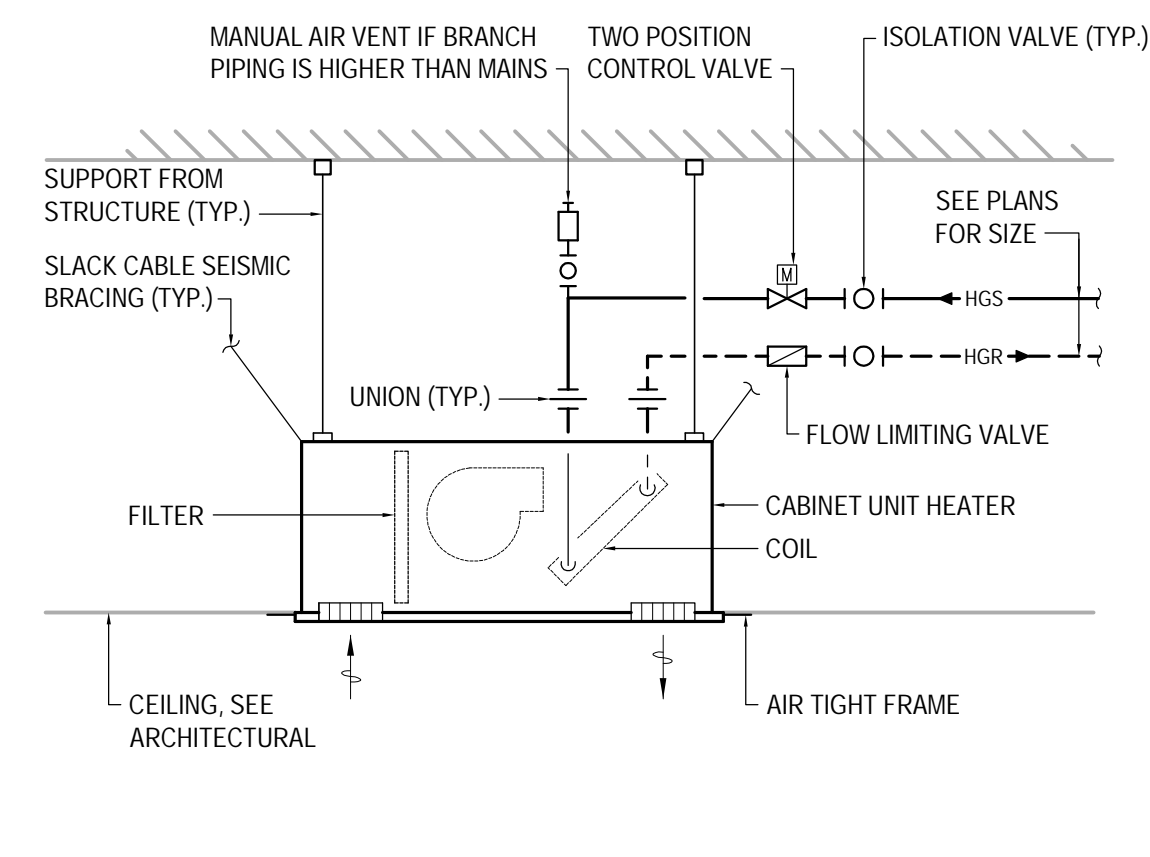
8 BASEBOARD DETAIL
SCALE: NONE



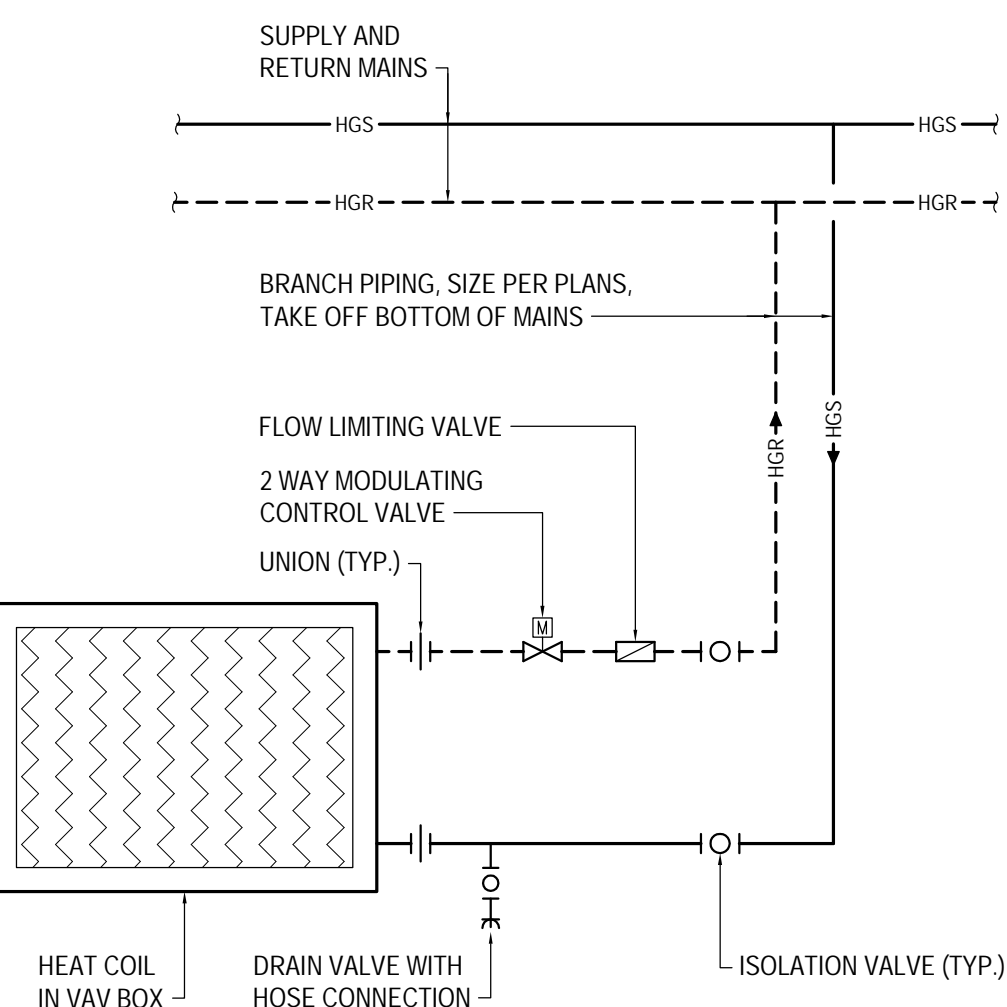
9 3-WAY VALVE HEAT COIL DETAIL
SCALE: NONE



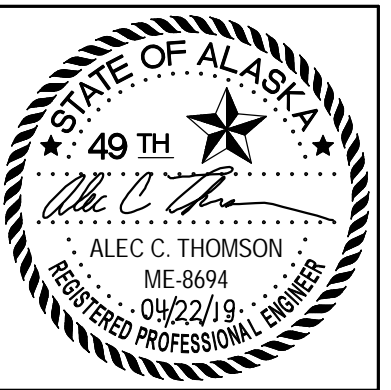
10 RTU HEAT COIL DETAIL
SCALE: NONE



11 CABINET UNIT HEATER DETAIL
SCALE: NONE



9 2-WAY VALVE HEAT COIL DETAIL
SCALE: NONE



CERTIFICATE OF AUTHORIZATION NO: T3 ALASKA, LLC AECL # 1625

spark design, llc
T3 ALASKA llc
Mechanical & Electrical Engineering
301 Calista Court, Suite 100
Anchorage, Alaska 99503
Ph: 907-665-7900 Fax: 907-665-7975

SOUTHCENTRAL FOUNDATION
PRIMARY CARE CLINIC - 1 NORTH
ANCHORAGE, ALASKA

REVISION SCHEDULE		
#	DESCRIPTION	DATE
1	BID DOCUMENTS	01/14/2019
2	CONFORMED DOCUMENTS	04/22/2019

JOB NO. 2017.117.0
DATE 12.28.2018
DRAWN STH
REVIEWED STH/ACT

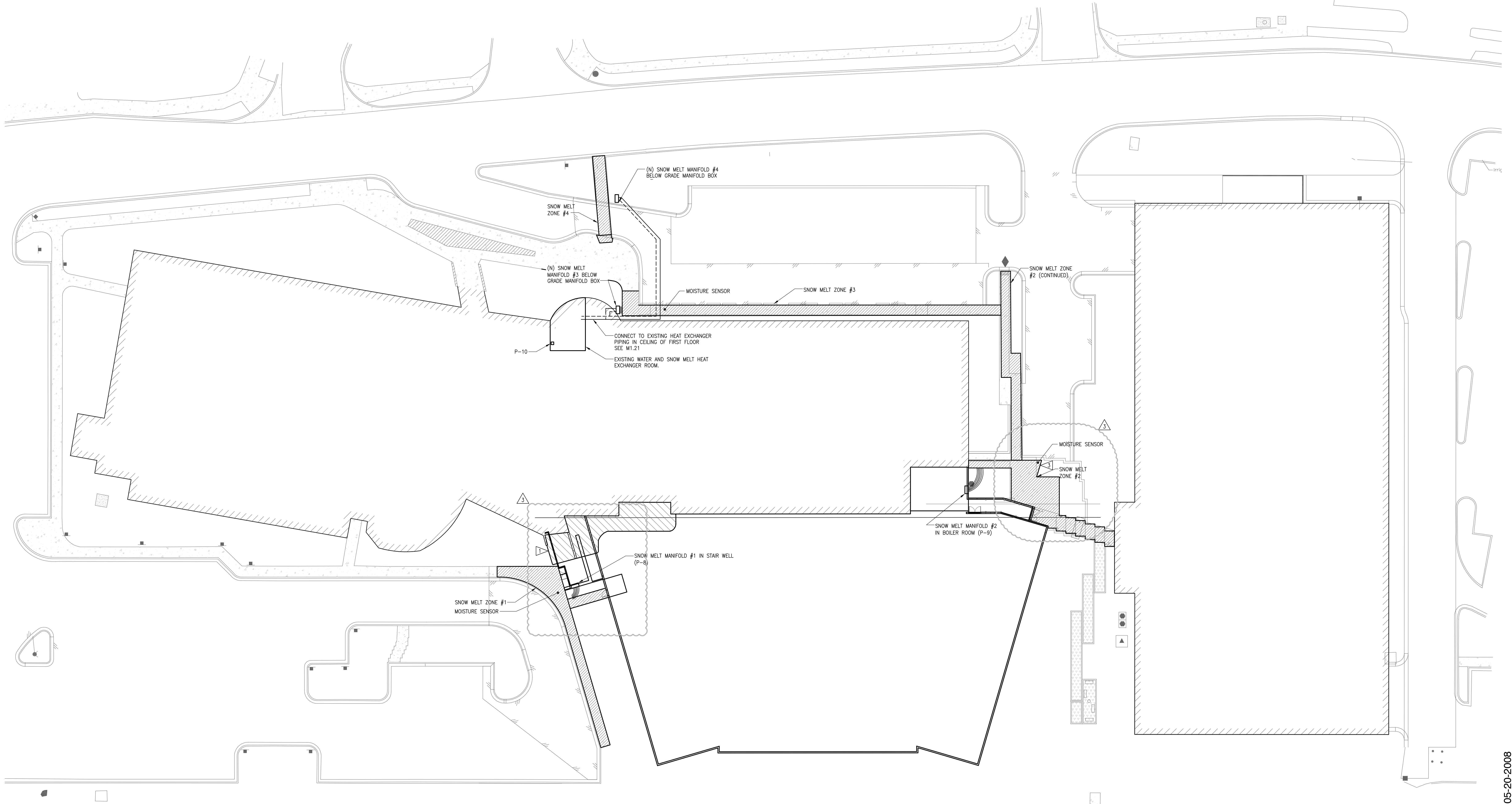
SHEET NAME
DETAILS

SHEET NO.
M7.01

EXHIBIT G - Existing Snow Melt System Information

SHEET NOTES:

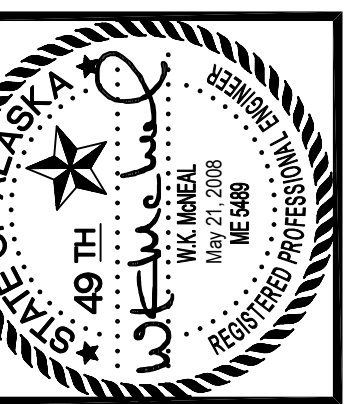
- ISOLATE EXISTING SNOWMELT IN PREPARATION FOR DEMOLITION. REMOVE PIPING BACK TO PCC 1 SNOW MELT ROOM SEE M1.21.
 - FOR SNOWMELT DETAILS SEE SHEET 3.16
- COORDINATE COLUMN W/ SNOWMELT



User: H:\CUSTOM May 21, 2008 3:38pm Drawing: J:\USERS\66674 SOUTH CENTRAL FOUNDATION PCC\3.0.0 DWGS\M3.10 HEATING SITE PLAN.DWG - Layout: M3.10 HEATING SITE PLAN

1 HEATING - SITE PLAN
1" = 20'

1"=20'-0" 0 10 20 40 60



kpb architects
architecture planning interior design design-build
445 G Street Suite 800 - Anchorage, Alaska 99501
907.524.4443 Fax: 907.524.2607 www.kpbarchitects.com

nbbj
223 Yale Avenue North
Seattle, Washington 98109
(206) 228-5555
Fax: (206) 627-2300

COFFMAN ENGINEERS
800 F Street
Anchorage, Alaska 99501
907.276.6694 Fax: 907.276.5442

NEESER CONSTRUCTION, INC.
Anchorage, Alaska 99503
2001 Blueberry Road
Office (907) 276-1056 Fax (907) 276-8533

**Southcentral Foundation
PCC III Clinic
Anchorage, Alaska**

REVISIONS	
03-28-2008	RE: ASI-003
04-17-2008	CORRECTIONS PER MOA COMMENTS
04-17-2008	COORDINATION CORRECTIONS
SHEET REISSUED 5-20-08	

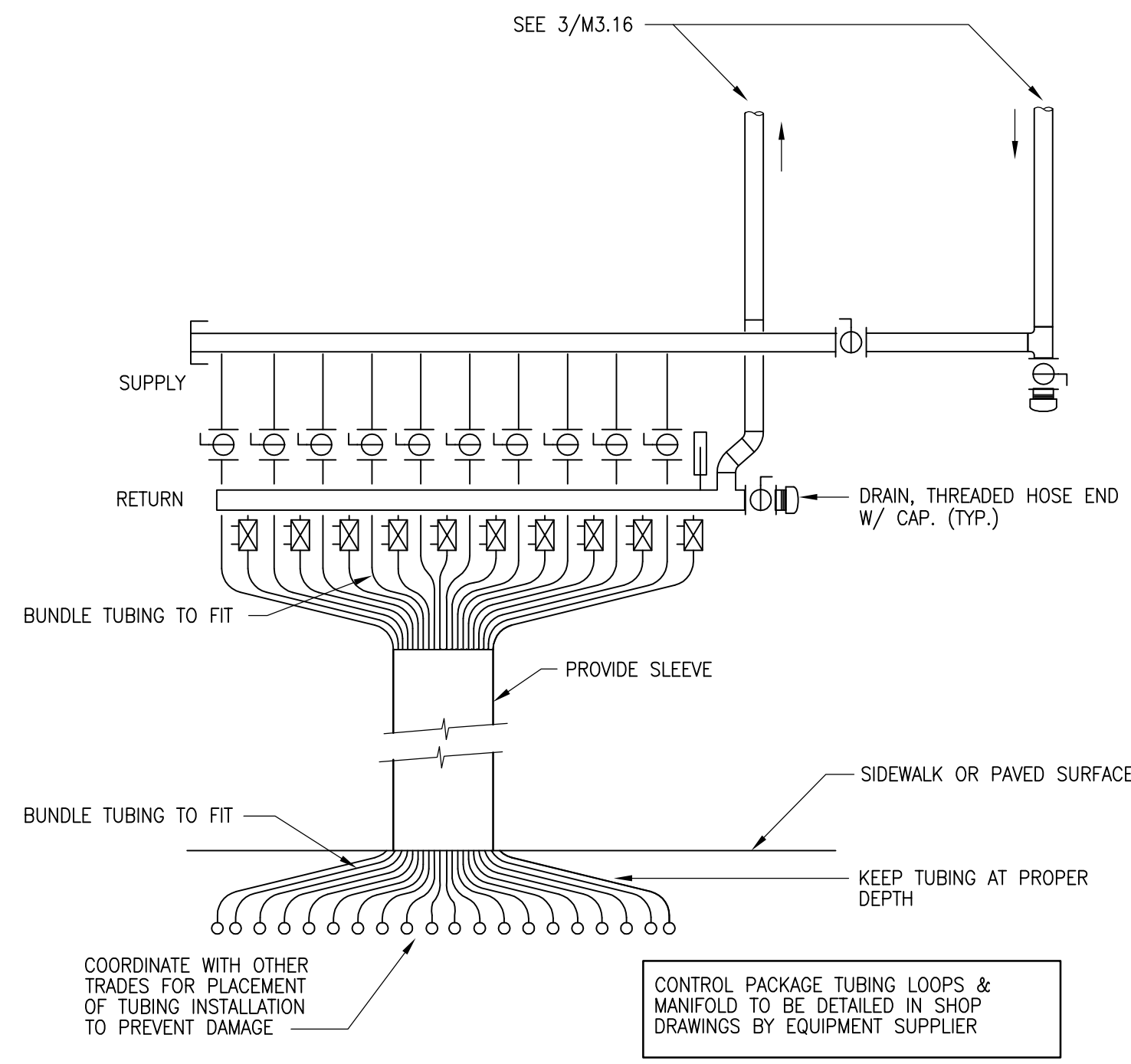
JOB NO.	100179.00
DATE	5-20-2008
DRAWN	NH
REVIEWED	WKM

HEATING
SITE PLAN

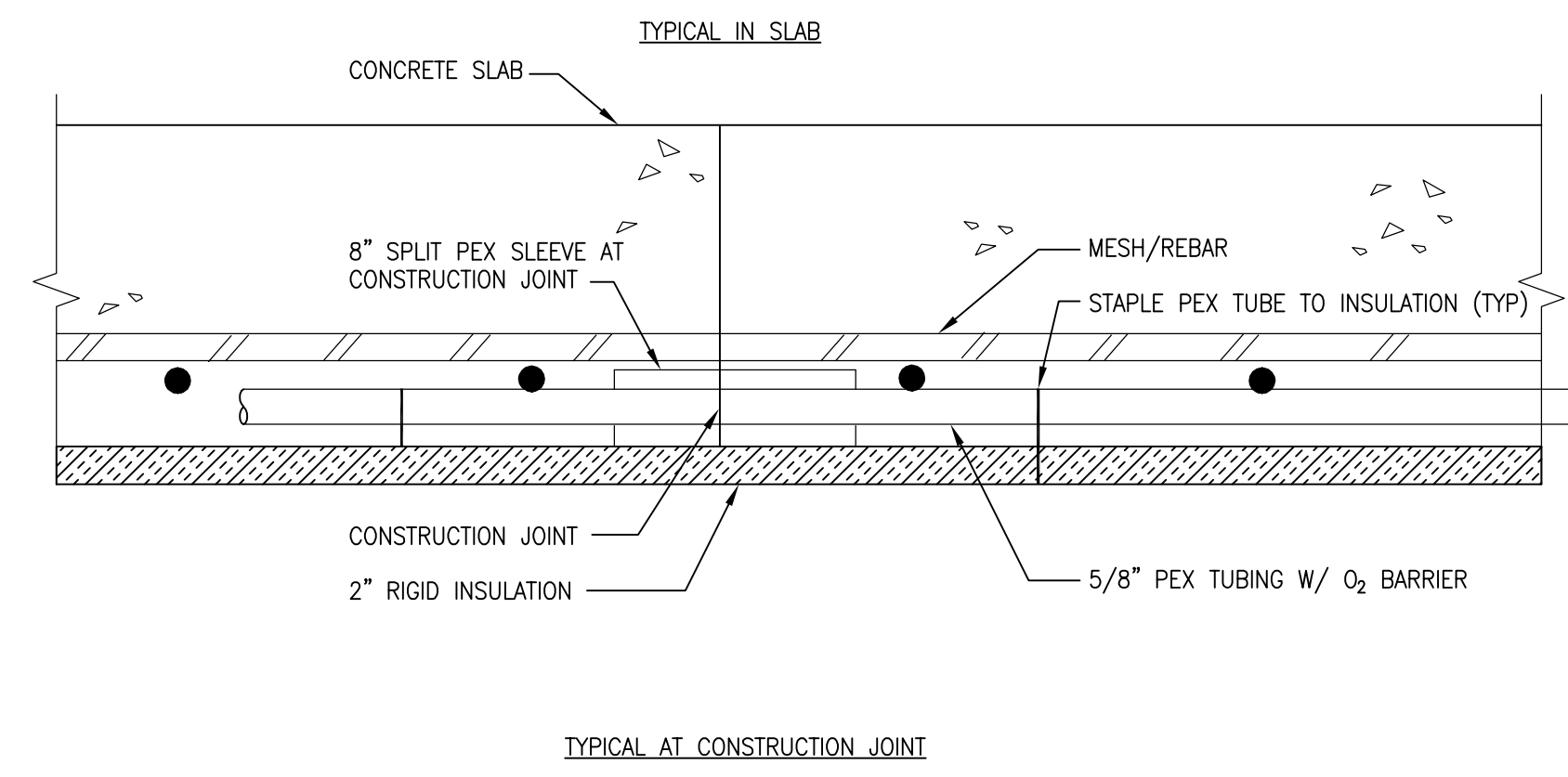
SHEET NO.
M3.10
M3.10 HEATING SITE PLAN.DWG

SHEET REISSUED FOR CONFORMED SET 05-20-2008

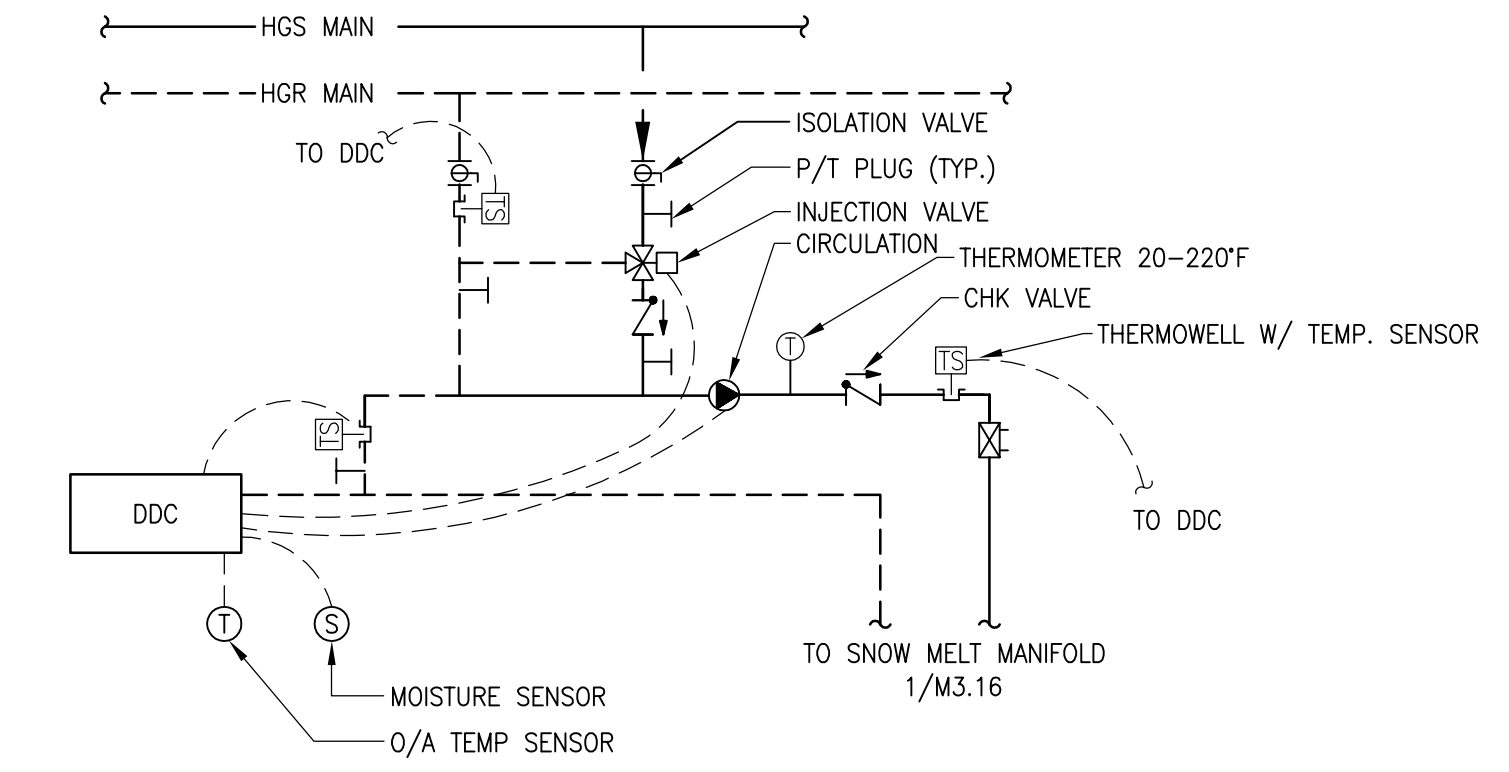
EXHIBIT G - Existing Snow Melt System Information



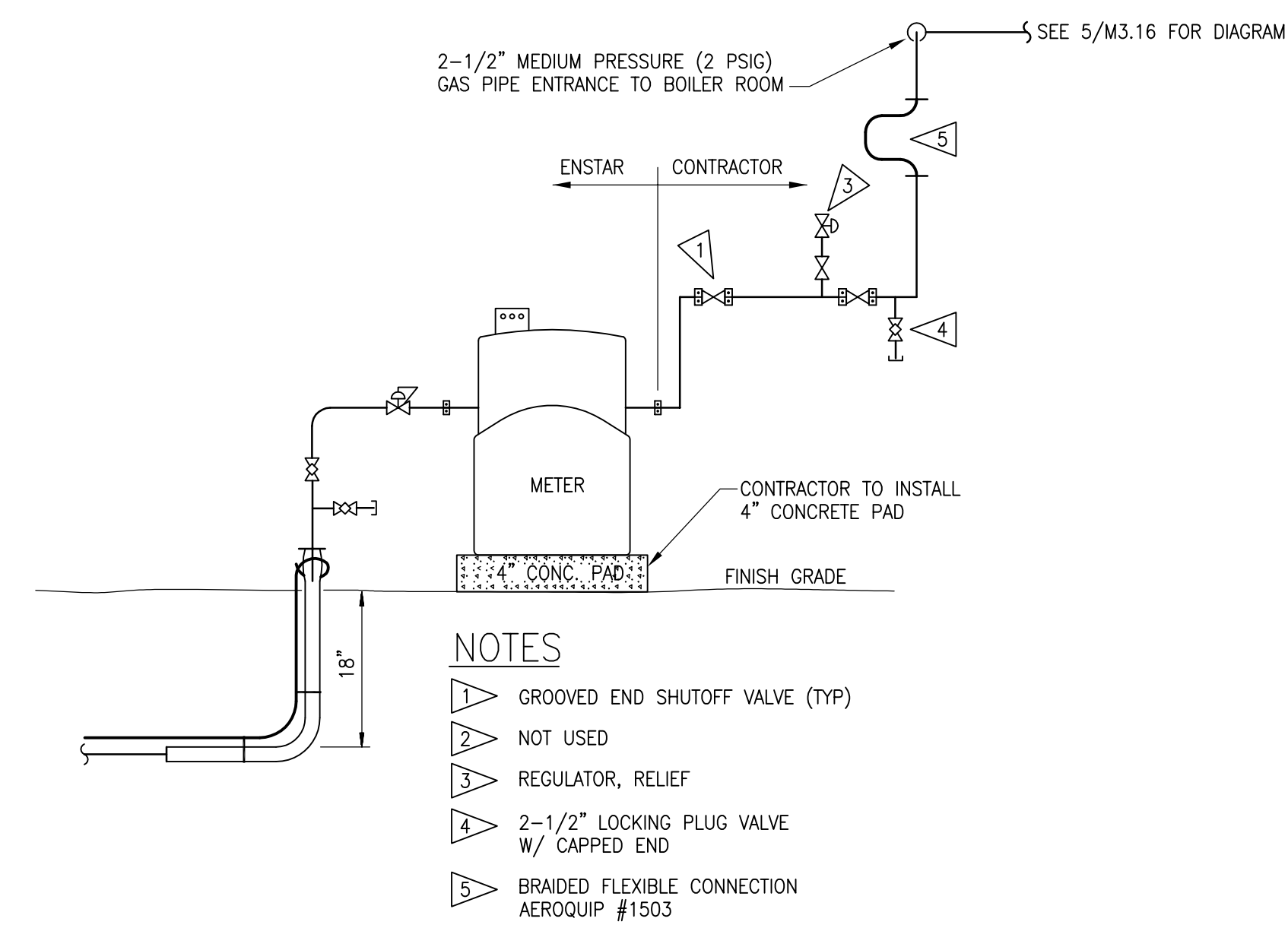
1 SNOW MELT MANIFOLD DETAIL
NO SCALE



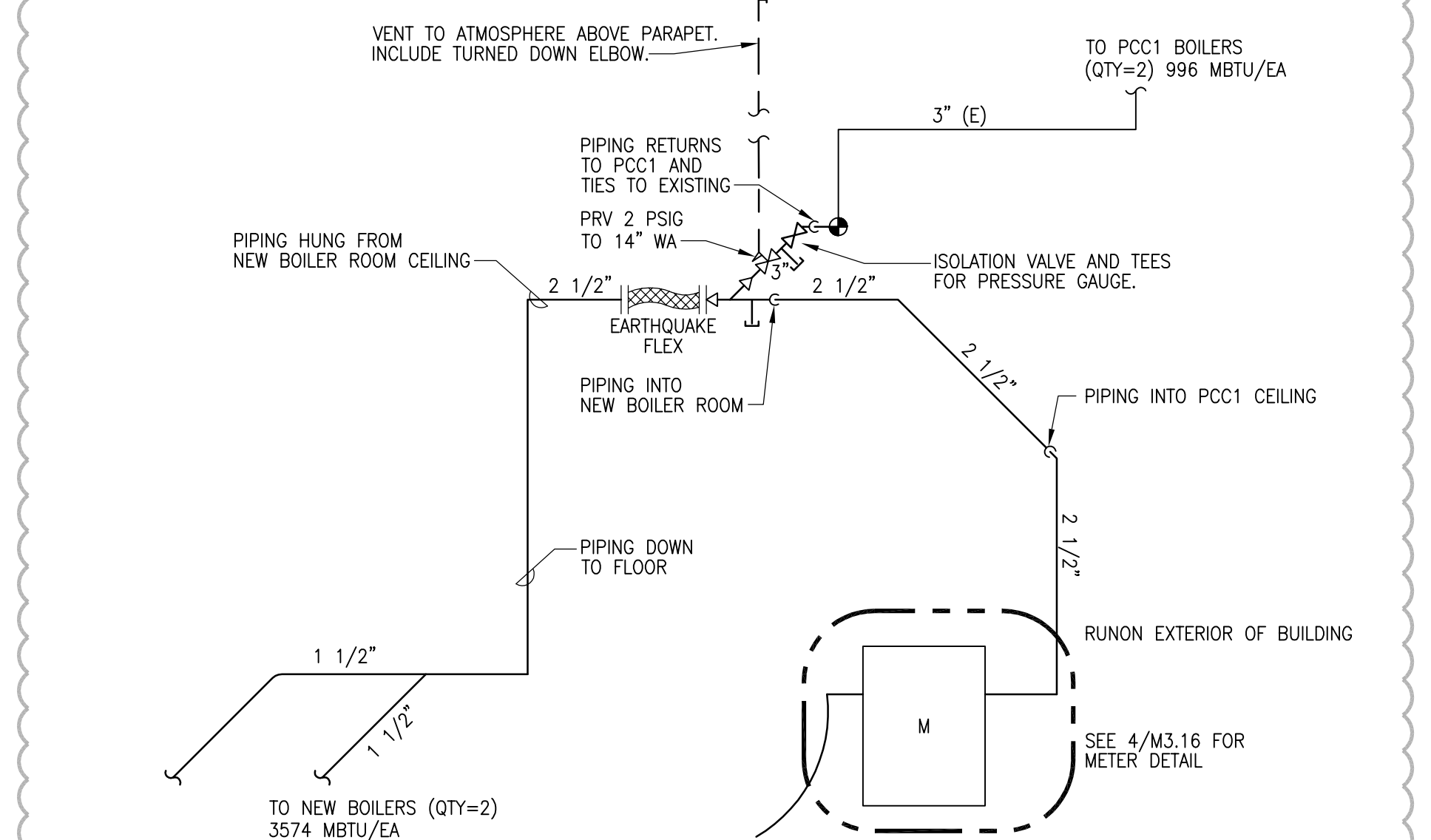
2 SNOW MELT INSTALLATION IN SLAB DETAIL
NO SCALE



3 RADIANT SNOW MELT PANEL DIAGRAM
NO SCALE



4 GAS SERVICE DETAIL
NO SCALE



5 GAS PIPING DIAGRAM
NO SCALE

User: HOUSTON_May_21_2008... Drawing: C:\USERS\66674\SOOUTH CENTRAL FOUNDATION PCC3\00 DWGS\M3.16 HEATING DETAILS.DWG - Layout: M3.16 HEATING DETAILS



kpb architects
architecture planning interior design design-build
445 G Street Suite 400 - Anchorage, Alaska 99501
907.524.4443 Fax: 907.524.4607 www.kpbarchitects.com

nbbj
223 Yale Avenue North
Seattle, Washington 98109
(206) 228-5555
Fax: (206) 627-2300

COFFMAN
ENGINEERS
800 F Street
Anchorage, Alaska 99501
907.276.6844 Fax: 907.276.5442

NEESER CONSTRUCTION, INC.
Anchorage, Alaska 99503
2001 Blueberry Road
Office: (907) 276-1056 Fax: (907) 276-8533

**Southcentral Foundation
PCC III Clinic
Anchorage, Alaska**

REVISIONS
03-28-2008 RE: ASI-003
04-17-2008 CORRECTIONS PER MOA COMMENTS
04-17-2008 COORDINATION CORRECTIONS
SHEET REISSUED 5-20-08

JOB NO.	100179_00
DATE	5-20-2008
DRAWN	NH
REVIEWED	WKM

HEATING
DETAILS

SHEET NO.
M3.16

SHEET REISSUED FOR CONFORMED SET 05-20-2008